



College of the
Sequoias


CATALOG 1960- 

TABLE OF CONTENTS

College Calendar for 1960-1961	3
Board of Trustees and Administration	4
Faculty	5
General Information—The College	8
Counseling and Guidance.....	9
Curricula.....	10
The Associated Students.....	10
Student Activities.....	10
Veteran's Education.....	12
State Aid to the Physically Handicapped.....	12
The Military and Selective Service.....	12
Transportation.....	12
Living Accommodations.....	13
Employment.....	13
Expenses.....	13
Student Insurance Coverage.....	14
Library.....	14
Scholarship and Loans.....	14
General Regulations—Admissions	17
Matriculation Deficiencies.....	17
Registration.....	17
Transcripts.....	18
Amount of Work.....	18
Courses for Non-Credit Status.....	18
Scholastic Honors.....	18
Placement and Aptitude Tests.....	19
Attendance.....	19
Physical Education Requirements.....	19
Conduct.....	20
Leaves of Absence.....	20
Withdrawals from Course or College.....	20
Deficiency Notices.....	20
Grading Procedures.....	20
Scholastic Regulations.....	21
Requirements for Graduation.....	22
Explanation of Symbols.....	23
Extended Day Program—General Information	25
Extended Day Program Opportunities.....	25
Fees.....	25
Lower Division Requirements—General Information	26
University of California, College of Letters and Science.....	27
University of California at Los Angeles, College of Letters and Science.....	28
University of California at Los Angeles, College of Applied Arts.....	30
Santa Barbara College, Division of Applied Arts.....	32
Stanford University.....	33
University of Southern California.....	35
California State Colleges: Fresno State College.....	36
California State Polytechnic College.....	36
San Jose State College.....	37
Suggested Programs—Agriculture	38
Agri-Business.....	39
Art.....	40

Business	41
Dentistry	46
University of California at Berkeley and at Los Angeles.....	46
University of Southern California.....	47
Drafting	48
Education	49
Engineering and Physical Science.....	49
Home Economics	50
University of California at Berkeley or Davis.....	50
State Colleges	51
Law Enforcement	53
Medicine	54
University of California at Berkeley and at Los Angeles.....	54
University of Southern California	54
Music	55
Nurses' Training	56
Universities and University Hospital Training Schools.....	57
Hospital Training Schools	57
Vocational Nursing	58
Pharmacy	58
University of California, Medical Center, San Francisco.....	58
University of Southern California.....	59
Physical Education	60
Trades and Industries	61
Description of Courses—Agriculture.....	63
Art	64
Business: Pre-Business Administration.....	66
Secretarial and Clerical	67
Merchandising	69
Accounting	69
Business Background	70
Education	71
Engineering	71
English: Composition and Literature.....	73
Speech and Arts	75
Foreign Languages	76
Home Economics	77
Hygiene	79
Industrial Arts	80
Metal Trades	80
Law Enforcement	80
Library Science	81
Mathematics	81
Military	83
Music	83
Nursing	85
Philosophy	85
Photography	86
Physical Education	86
Psychology	88
Science	89
Social Science	94
Trades and Industries: Building Trades.....	97

CALENDAR 1960 - 1961

FIRST SEMESTER

September 7, 1960 — January 27, 1961

August 15	- - - -	New Student Application and Transcript Due
August 22-26, August 29-September 2	- - - -	Student Counseling
August 27	- - - -	Aptitude and Placement Tests
September 5	- - - -	General Faculty Meeting
September 6	- - - -	Registration of all Students
September 7	- - - -	Class Instruction Begins
September 12-16	- - - -	Extended Day Registration
September 16	- - - -	Last Day to Add Classes
September 19, 21, 23	- - - -	Orientation of New Students
October 14	- - - -	Last Day to Drop Courses Without Penalty
November 4	- - - -	Deficiency Notices Mailed
November 11	- - - -	Veterans Day
November 24-25	- - - -	Thanksgiving Vacation
December 21-January 2	- - - -	Christmas Vacation
January 20-26	- - - -	Semester Examinations
January 27	- - - -	End of First Semester

SECOND SEMESTER

February 1, 1961 — June 9, 1961

January 13	- - - -	New Student Application and Transcript Due
January 14	- - - -	Aptitude and Placement Tests
January 23-26	- - - -	Counseling of New Students
January 31	- - - -	Registration of all Students
January 31-February 3	- - - -	Extended Day Registration
February 1	- - - -	Class Instruction Begins
February 10	- - - -	Last Day to Add Classes
February 13	- - - -	Lincoln's Birthday
March 10	- - - -	Last Day to Drop Courses Without Penalty
March 24	- - - -	Deficiency Notices Mailed
March 27-31	- - - -	Easter Vacation
May 13	- - - -	Aptitude and Placement Tests, Tulare County
May 20	- - - -	Aptitude and Placement Tests, other counties
May 30	- - - -	Memorial Day
June 2-8	- - - -	Semester Examinations
June 9	- - - -	End of Second Semester
June 11	- - - -	Commencement



BOARD OF TRUSTEES

EMMET W. PAREGIEN, President

DR. CHARLES M. MATHIAS

W. LELAND SWALL

WESLEY LINK

FRED B. CARROLL, Clerk

ADMINISTRATION

IVAN C. CROOKSHANKS, Superintendent

WILLIAM C. MCKINNEY, JR., Dean of Instruction

JERRY H. GIRDNER, Dean of Student Personnel

VERNON J. SILVA, Dean of Men

LOIS A. TILLMAN, Dean of Women

MAURICE V. CORBETT, Dean of Extended Day

AGNES STROM, Registrar

FACULTY

ANDERSON, VERNON A. - - - - Physical Education, Social Science
 A. B., M. A., Fresno State College

ANGOVE, JERRY - - - - - English, Physical Education
 A. B., M. A., Stanford University

BEARDEN, ALIA - - - - - Hygiene, Physical Education
 A. B., Whittier College

BOCK, RUTH C. - - - - - Business
 A. B., Fresno State College

BRICKER, JOHN P. - - - - - Social Science
 A. B., Michigan State University; M. A., University of California

BRYANT, A. E. - - - - - Biological Science
 A. B., M. A., University of California

BURKHALTER, GERRY - - - - - Business
 A. B., Fresno State College

CLEVELAND, WILLIAM R. - - - - - Physical Science
 B. S., M. S., California Institute of Technology

CORBETT, MAURICE - - - - - Speech - Drama
 A. B., University of California; M. A., Fresno State College

COTTRELL, RICHARD - - - - - Engineering
 A. B., Fresno State College

CROOKSHANKS, IVAN - - - - - Superintendent
 A. B., M. A., Redlands University; Ed. D., University of California

CUNNINGHAM, WILLIAM - - - - - Biological Science
 B. S., University of Chicago; M. A. University of Illinois

DEETZ, LINCOLN - - - - - Engineering
 B. S., River Falls State, Wisconsin

EGGLESTON, STEPHEN - - - - - Psychology, Counseling
 A. B., M. S., University of Southern California

ESSEX, WILFRID L. - - - - - Physical Science
 A. B., University of Southern California; M. A., Fresno State College

FARRIS, EDWARD A. - - - - - Criminology
 A. B., University of California

FISCHER, HAROLD L. - - - - - Social Science
 A. B., University of Wisconsin; M. A., University of Southern California

FOTIAS, C. A. - - - - - French, Spanish, English
 A. B., M. A., University of Michigan

FRIEDBERG, MARY NORA - - - - - Home Economics
 B. S., Oregon State College

FRITZ, IRVING - - - - - Music
 A. B., College of the Pacific

GIRDNER, JERRY H. - - - - - Counseling
 A. B., San Jose State College; M. A., Stanford University

GUARISCO, JOSEPH A. - - - - - Building Trades
 B. V. E., Fresno State College

HALL, LINCOLN H. - - - - - Social Science
 B. S., University of California at Los Angeles; M. A., Claremont

JACOBSEN, RICHARD C. - - - - - Physical Education
 B. S., Drake University; M. S., University of Southern California

JENSEN, BRUCE F. - - - - - Agriculture
 B. S., University of California

KILER, FRANK E. - - - - - Metal Trades
 A. B., Santa Barbara State College

KING, JOSEPH A. - - - - - English
 A. B., Long Island University; M. A., University of Utah

LAPIKE, NATALIE - - - - - Librarian
 A. B., University of California

LAWHORN, FRANK L. - - - - - Agriculture
 B. S., M. A., California State Polytechnic College

LEWIS, JAMES GORDON - - - - - Social Science
 A. B., M. A., Occidental College

LEWIS, REX O. - - - - - Business
 B. S., University of Nebraska; M. S., University of Southern California

McCULLEY, KATHERINE - - - - - Psychology
 A. B., Pomona College; M. A., University of California

McKINNEY, WILLIAM C., JR. - - - - - Social Science
 A. B., Saint Mary's College; M. A., University of California

MARTIN, NOEL B. - - - - - Social Science
 B. S., California Maritime Academy; M. A., University of California;
 M. A., San Francisco State College

MERIDITH, CHARLES E. - - - - - Physical Science
 B. S., M. S., University of Oregon

MURRAY, THOMAS - - - - - English, Philosophy
 A. B., Seattle Pacific College; M. Th., Berkeley Divinity School; Ph. D., Yale University

MYERS, DOROTHY - - - - - Business
 B. B. A., University of Washington; M. S., University of Southern California

NEWCOMER, DUANE - - - - - Music
 A. B., San Jose State College; M. A., Sacramento State College

NEWNAN, C. JEAN - - - - - Physical Education
 A. B., Fresno State College.

OTTO, JOHN D. - - - - - English
 A. B., Fresno State College; M. A., Stanford University

PAPPAS, GEORGE C. - - - - - Speech, Drama
 A. B., Fresno State College; M. A., University of Southern California

PARKER, ALLEN W. - - - - - Physical Science
 A. B., Linfield College

PIETROFORTE, ALFRED - - - - - Education
 A. B., Fresno State College

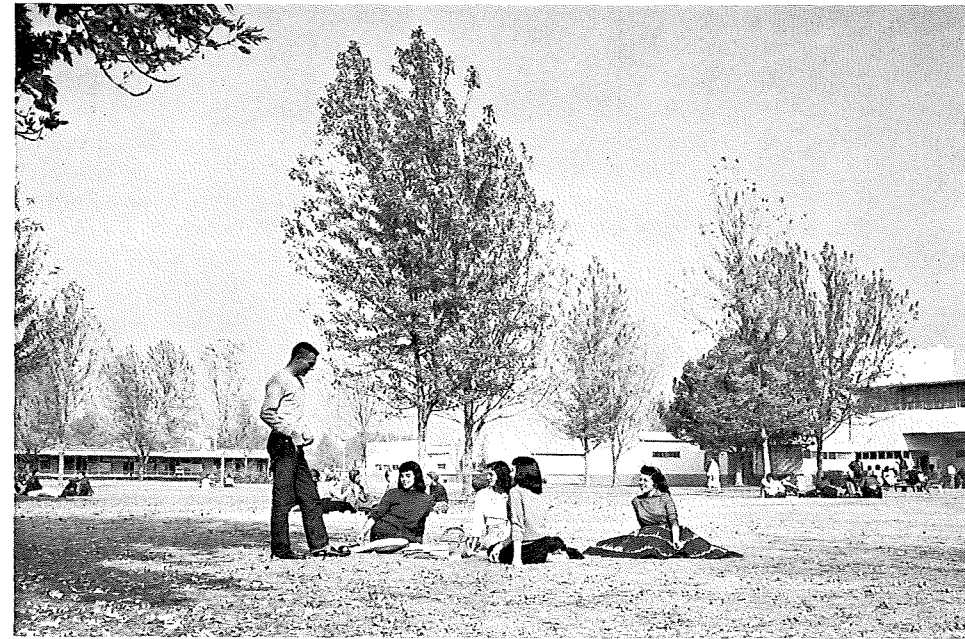
POLLOCK, EDWIN - - - - - Mathematics
 B. S., University of Southern California

PUSATERI, SAMUEL J. - - - - - Biological Science
 A. B., M. A., University of Buffalo; Ph. D., University of Southern California

QUINN, JAY G. - - - - - Business
 A. B., M. A., San Francisco State College

RAPHAEL, HOWARD L. - - - - - Mathematics
 A. B., University of California at Los Angeles

REID, WILLIAM L. - - - - - Biological Science
 A. B., Fresno State College
 ROBERTSON, GLENN E. - - - - - English
 A. B., University of Utah; M. A., Brigham Young University
 ROBINS, FRED P. - - - - - Engineering
 B. S., California Institute of Technology
 ROLLINS, GWENDOLYN N. - - - - - English
 B. S., Southeast Missouri State College; M. A., University of Michigan
 ROULEAU, ALICE G. - - - - - Art
 A. B., M. A., University of California
 ROUTEN, WILLIAM E. - - - - - Agriculture
 B. S., University of Kentucky; M. Ed., University of Illinois
 RUSSELL, JO A. - - - - - Art
 B. S., Oklahoma State College; M. A., Colorado State College
 SCHOR, IRVING M. - - - - - Physical Science
 A. B., New York University; M. S., University of Virginia; M. D., Medical Col. of Virginia
 SILVA, VERNON J. - - - - - Student Activities, Counseling
 A. B., University of California, Santa Barbara College; M. A., Stanford University
 SNELLING, CLAUDE - - - - - Journalism
 A. B., Fresno State College; M. S., University of California at Los Angeles
 SPIGARELLI, DINO - - - - - Hygiene, Physical Education
 B. S., M. S., Kansas State College
 STRINGARI, LAWRENCE - - - - - Physical Science
 B. S., University of Santa Clara; M. S., College of the Pacific
 STROM, AGNES - - - - - Registrar
 B. S., Armstrong College
 SWISHER, JAMES - - - - - Mathematics
 B. S., Idaho State College; M. S., University of Colorado
 TAYLOR, ROY D. - - - - - Hygiene, Physical Education
 A. B., Fresno State College
 TAYLOR, VERA - - - - - Home Economics
 B. S., M. S., Iowa State College
 THEIGE, JACK - - - - - Business
 A. B., M. A., Fresno State College
 THOMPSON, LEWIS A. - - - - - Business
 A. B., University of Nebraska; M. A., University of California at Los Angeles
 TILLMAN, LOIS A. - - - - - Social Science, Counseling
 A. B., M. A., University of California
 VON WERLHOF, JAY - - - - - Social Science
 A. B., M. A., University of California
 WALKER, WILMA - - - - - Nursing
 B. S., Pacific Union College
 WARREN, CAROLYN - - - - - English
 A. B., University of Colorado; M. A., Brigham Young University
 WILHELMSSEN, P. - - - - - Physical Education
 A. B., Fresno State College
 TO BE ANNOUNCED - - - - - Vocational Nursing



GENERAL INFORMATION

THE COLLEGE

The college was established by the Visalia Union High School Board of Trustees as Visalia Junior College in 1925, and offered the first post-high school instruction to students of this area beginning September, 1926. College classes were housed in the Visalia Union High School plant until September, 1940. At that time the college moved to its own fifty-acre campus southwest of Visalia where new buildings had been completed.

On January 18, 1949, the voters of the Tulare Union High School District and the Visalia Union High School District elected to organize the areas in those two high school districts into a junior college district. During the spring the students voted on a name for the newly-formed junior college district. From the names suggested by the students, the board of trustees chose the name, College of the Sequoias.

On January 18, 1950, the voters within the Exeter Union High School District and the Woodlake Union High School District voted to join the College of the Sequoias District.

On September 19, 1950, the voters within the Lindsay Unified School District voted to join the College of the Sequoias District.

College of the Sequoias serves an area of more than three thousand square miles in the heart of the San Joaquin Valley. Its offerings include an educational program for students who plan to continue their education at a university or state college, or who desire further general education, as well as terminal courses for specific occupations. The college provides counseling service for all students with especial emphasis on vocational problems.

The general aim of the College of the Sequoias is to provide educational service for the various communities of its area. This aim requires of it a variety of functions and programs which include training for occupational competency, for civic competency, and for personal efficiency. The College of the Sequoias will provide formal college education for the youth of the communities and will, as well, serve as an active cultural center, attempting to meet the total post-high school needs of the communities.

The specific aims of the College of the Sequoias are:

1. To provide comprehensive training to those students who will finish their period of formal education in the junior college. This is designed to achieve occupational competence.
2. To provide every student that training which will prepare him to function effectively as a citizen.
3. To assist its students to "find themselves" through proper counseling and guidance.
4. To provide an adequate lower division offering for those students who plan to transfer to a university or college after completing two years in junior college.
5. To provide instruction to meet the needs of adults living in the region.
6. To provide an opportunity for students to remove any deficiencies they may have in entrance requirements to a university.

Our college occupies a fifty-acre site. The buildings are modern and well equipped. Additions have been made each year. We have recently occupied a new \$330,000 library and social science building. Construction is underway for a student store and student union building.

The addition of a shop building which will include vocational auto shop, electronics, and other industrial arts is on the planning boards.

In addition to the fifty-acre site on which the main buildings are located, we have a farm consisting of 160 acres. This farm has many buildings which include a shop, grade A dairy barn, beef, hog, and poultry units. This farm is used as an experimental laboratory by the agriculture department.

It is the plan of the administration to continue our addition of physical facilities on a pay-as-you-go basis.

College of the Sequoias, with its strategic location, its excellent buildings and facilities, together with a well-trained staff, will continue to serve the youth of this area. Constructive suggestions from students and patrons are always welcome.

COUNSELING AND GUIDANCE

Counseling and guidance are important aspects of the College program. The counselors and the deans constitute the regular counseling staff. All faculty members participate as advisers, and students are encouraged to consult them on problems concerning their courses.

Specialized counseling services are available from the counseling staff in the Student Personnel Center. The purpose of these services is to give students guidance in personal problems and counseling in vocational and educational fields. Professionally-trained counselors use modern scientific personnel methods in assisting students to analyze their aptitudes, interests, abilities, and personality traits. Up-to-date information about vocational training and opportunities is available.

CURRICULUM

Junior college students may be classified into two major groups: those students who are planning to continue their education in four-year colleges or universities and those students who expect to enter some occupation either before or after graduation from junior college. The curriculum is designed to meet the needs of the students in both groups.

Courses numbered 50 to 99 are in general not transferable to a university. The purpose of these courses is two-fold: (1) to provide courses designed for students who wish to complete a general education in the junior college and to assume immediately their places as active citizens of the community; (2) to provide semi-professional or vocational courses designed for students who wish to enter the business and industrial world after finishing their junior college studies.

THE ASSOCIATED STUDENTS

The Associated Students of College of the Sequoias is the official student body organization. Upon payment of the ten dollar student activity fee at registration each semester, the student receives a student body card which entitles him to participate in the activities of the organization so long as he remains in good standing. All activities which concern the student body as a whole are sponsored by the associated students.

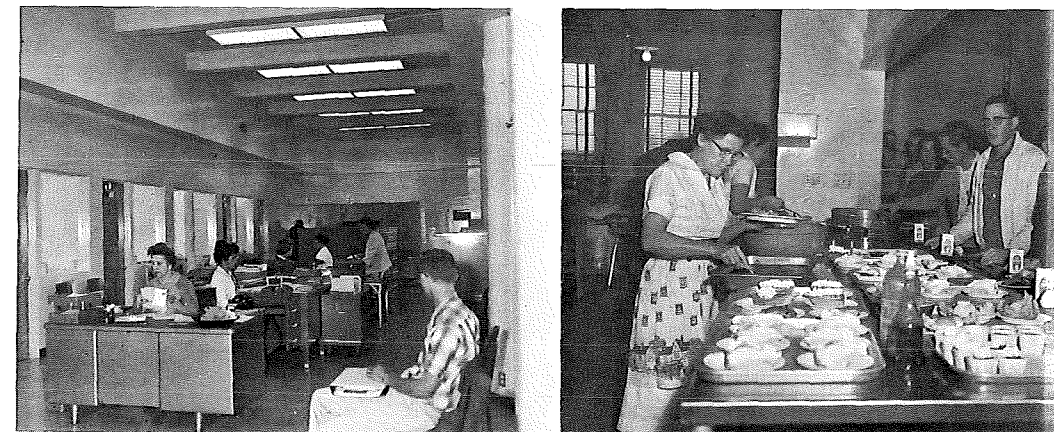
The business of the associated students is carried on by the Student Executive Board, the members of which are elected by the students. Comprising the executive board are the president, vice-president, sophomore class president, freshman class president, Inter-Club Council president, Associated Men Students president, Associated Women Students president, and the commissioners of art, finance, records, activities, athletics, and publications.

STUDENT ACTIVITIES

At the College of the Sequoias the responsibility of a junior college to help develop the social, emotional, and physical, as well as the intellectual growth of students is recognized. Consequently, a variety of out-of-class, or co-curricular, activities are provided. These activities include responsible, self-governing student government, assembly programs which are both educational and entertaining, a diversified athletic and recreation program, and social events which are designed to appeal to all students.

There are 35 actively-functioning clubs or college-wide committees on the College of the Sequoias campus. These groups are headed by the Inter-

— 10 —



Club Council, which works with, but is subordinate to, the Student Executive Board. The constitution of the Associated Students of College of the Sequoias vests financial control over student body funds in the executive board, which is composed of elected representatives of the student body. This governing group, which is advised by the dean of men, also makes final decisions on virtually all matters concerning extra-curricular activities.

Clubs and Organizations: Headed by the Inter-Club Council, the 35 organizations presently active on the campus are Alpha Gamma Sigma (honor scholarship society), Archeology Club, Associated Veteran Students, Business Club, Canterbury Club, Chess Club, Circle K (a men's service society), Competitive Speech, Double Clutchers (bus drivers club), Foreign Language Club, Future Teacher's Club, Gunnery Club, Home Economics Club, International Relations Club, Medical Arts Club, Newman Club, Physical Science and Engineering Club, Press Club, Sequoia Christian Fellowship, Ski Club, Stumblers (folk dance club), Tenpins (bowling club), Varsity Club, Wesley Club, Young Democrats, Young Republicans, Young Farmers, Associated Men Students, Associated Women Students, Art Services Committee, Assembly Committee, Rally Committee, Social Committee, Student Properties Committee, and Technical Assistance Committee. The Building Trades Alumni, composed of former students majoring in building trades, also cooperates with the student body in connection with certain student activities.

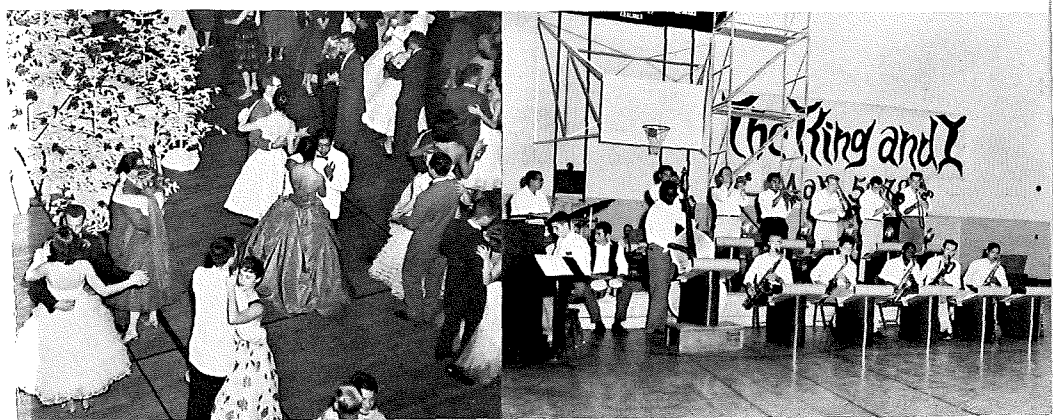
Athletics: The College of the Sequoias is represented by teams in football, basketball, baseball, cross country, swimming, track, tennis, golf and wrestling. Athletically speaking, the College of the Sequoias has been a stand-out in the Central California Junior College Association, winning, on the average, at least two conference championships each year in major sport activities.

Intramural sports also are stressed, with physical education activities such as bowling, golf, swimming, tennis, tumbling, badminton, weight lifting, boxing, archery, wrestling, folk-dancing, social dancing and modern dancing available to students. Most of these classes are offered on a co-educational basis.

Dramatics: An experimental theatre group offers interested students the opportunity to participate in both one-act and three-act plays.

Music: The choir, many smaller vocal groups, a marching band, a dance band, and various instrumental ensembles furnish music for assemblies and many special occasions during the school year.

Operetta: For several years the College of the Sequoias has presented an outstanding operetta or light opera in the spring to packed houses in the



Montgomery Auditorium. Recent productions include "South Pacific," "Swing Mikado," "The King and I," and "Oklahoma." The drama, music and physical education departments, together with almost all other divisions of the college, combine efforts in these annual presentations.

Publications: College of the Sequoias journalism students publish a weekly newspaper (The Campus) and an annual (Koh-Kyo). Both publications have won many awards in rating contests. A handbook is published for distribution to students when they register in the fall. A college literary magazine (The Tangent) is also published.

Social Affairs: Activities in the social sphere include a number of dances, both formal and sport, an all-school carnival, picnics, teas, barbecues, and luncheon meetings. Many of these functions are college-wide in their participation while others are held mainly by and for the benefit of individual clubs or organizations.

VETERAN'S EDUCATION

The college is approved for training veterans under the provisions of Public Law 16, Public Law 550, and Public Law 894. Public Law 16 veterans must present an original supplemental certificate of eligibility. All students planning to receive benefits from any of the aforementioned veterans bills should contact the college registrar as soon as possible.

STATE AID TO THE PHYSICALLY HANDICAPPED

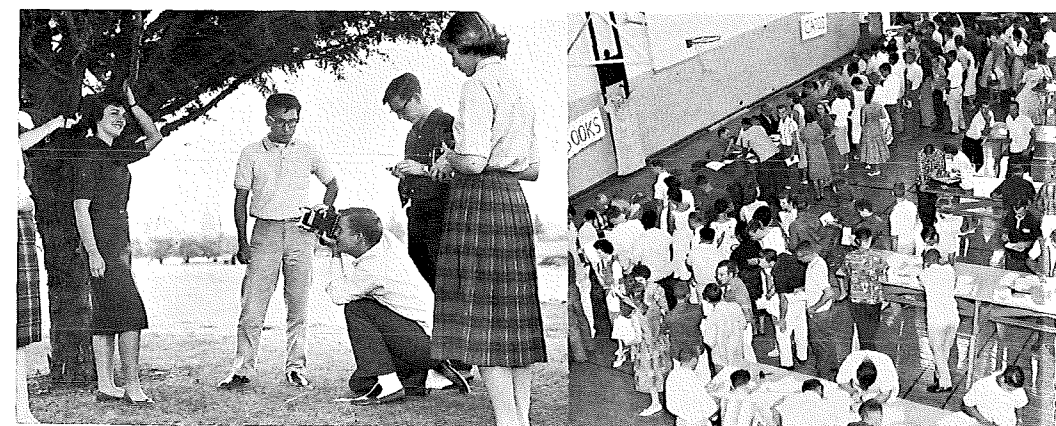
The State of California, through its Bureau of Vocational Rehabilitation, provides financial assistance to students, both civil and military, who have physical disabilities. This assistance equals the necessary school expenses and may include an additional amount to help cover the cost of living. Students who may be entitled to this assistance should consult either the dean of women or the dean of men.

THE MILITARY AND SELECTIVE SERVICE

The college cooperates fully with various military programs to aid students in preparing themselves for their military obligations while remaining in college. College of the Sequoias officials also are in close contact with Selective Service and are in a position to give maximum help to students who desire to be deferred so that they may continue their education.

TRANSPORTATION

Transportation is provided to and from the college by a modern well-kept fleet of busses. These busses operate on "shoe string" runs, staying



over-night at the end of the run. Areas served by busses include Alpaugh, Corcoran, Delano, Dinuba, Exeter, Hanford, Kingsburg, Ivanhoe, Laton, Lemoore, Lindsay, Orosi, Riverdale, Stratford, Strathmore, Three Rivers, Tulare, Visalia and Woodlake.

Any student is eligible to ride these busses providing he lives a sufficient distance from the college.

LIVING ACCOMMODATIONS

Information regarding rooms or room-and-board situations available for students who wish to live in the local area may be obtained from the Dean of Women and the office.

Women must have the approval of their parents or guardians and must check with the Dean of Women if they are not residing at home. Living in apartments, except in the case of married students, is not encouraged by the college.

EMPLOYMENT

The College recognizes that one of the tests of its programs is the success with which current students, graduates, and former students meet the requirements of employers. The College has centralized its placement services in the Student Personnel Center. Here all students who are interested in part-time or full-time employment may file application forms for work. Every effort is made to place students in jobs for which they will be best suited in terms of interest, aptitudes, and past work experience. The College considers that satisfactory part-time work experience is an important part of the vocational adjustment of students, and the Student Personnel Center, whenever possible, places applicants where the experience will be most beneficial.

Students who wish to work in private homes for room and board should consult the Dean of Women or the Dean of Men. No definite arrangements may be made by correspondence since a personal interview is always necessary.

EXPENSES

No tuition is charged. An activity fee of ten dollars is payable each semester at the time of registration.

There are no laboratory, gymnasium, library, locker or shop fees.

Text books and school supplies will cost approximately forty-five dollars a semester. However, costs for supplies will vary according to the student's major—consult counselor. New and used text books and essential stationery supplies may be purchased on the campus at the Associated Students Store.



STUDENT INSURANCE COVERAGE

Members of the Associated Students of College of the Sequoias are covered for personal accident or injury by a unique policy paid for by the student body and the College of the Sequoias District. In addition to other benefits, this policy provides non-deductible coverage for accidents occurring during curricular or co-curricular activities either on or off the campus.

LIBRARY

The new functional and attractive college library was completed in February 1959. Open stacks, typing, conference and listening rooms are features of the new facility.

The present book collection of 17,000 volumes has been carefully selected to meet course requirements and the recreational reading needs of students and faculty. More than 225 current magazines and newspapers are received regularly. The resources of other libraries in the state are available through inter-library loans.

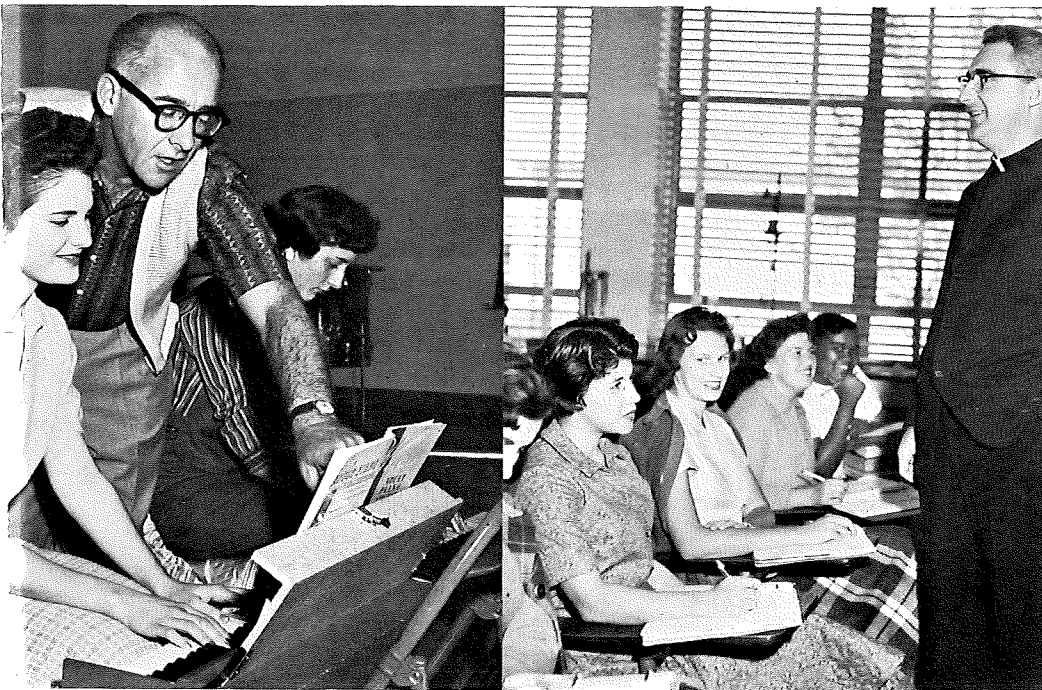
SCHOLARSHIPS AND LOANS

A number of scholarships sufficient to cover the cost of activity fees, books and supplies are awarded to outstanding incoming students by the College of the Sequoias student body. Awards are based on academic ability, financial need, and pre-eminence in student citizenship and leadership.

During the 1959-60 school year College of the Sequoias also received scholarships from the following organizations or individuals:

Alpha Gamma Sigma Honor Society, COS
Associated Women Students, COS
Bud Blosser Memorial, Fresno
Building Trades Alumni Association
Business Club, COS
Business and Professional Women, Hanford
Carpenters Local #1484, Visalia
Comision Honorifica, Mexicana, Hanford
Connie's Barber Shop, Visalia
COS Faculty Club
C. S. F., Tulare High School
Daubers Club, Hanford High School
Delta Theta Tau, Hanford
Elks Club, Tulare
Elks National Foundation
Emblem Club, Visalia
Ex-Animo Club, Lemoore
Exeter High School Parents Club
Exeter High School Student Body
Future Business Leaders of America
Future Teachers Club, COS
G. A. A., Corcoran High School
Thoburn S. Haworth
Inter-Club Council, COS
Japanese Community of Delano

Kings County Legal Secretaries
Kiwanis Club, Lemoore
Kiwanis Club, Tulare
Kiwanis Club, Visalia
Lemoore High School Student Body, Lemoore
Newman Club, COS
Optimist Club, Visalia
Opti-Mrs., Visalia
Redwood High School Letterman Club, Visalia
Redwood High School Student Body, Visalia
Rotary Club, Mexico and Visalia
Rotary Club, Visalia
San Joaquin Valley Surveyors Group
Soroptimist Club, Corcoran
Stone Chevrolet Company, Exeter
Eldridge Stuart Foundation
Tipton Faculty Club
Torch Club, Tulare High School
Tulare County Licensed Vocational Nurses
Tulare County National Bank
Tulare Elks Lodge
United Council of Church Women, Visalia
Visalia Community Service Organization
Visalia Teachers Association
Visalia 20-30 Club #18
H. M. Way, Exeter



A faculty committee encourages and aids outstanding students to obtain scholarship awards upon the completion of their work at the College of the Sequoias. Organizations which sponsor scholarships specifically for the benefit of College of the Sequoias graduates who continue their education at four-year colleges or universities are the following:

Alpha Gamma Sigma Honor Society, COS
American Association of University Women, Sequoia Branch
Bank of America Business Awards
Business and Professional Women's Club
Delta Kappa Gamma
Future Teachers Club, COS
McMahan Furniture Company
Soroptimist Club
Tulare Council of the Parent-Teacher Associations
University of California Alumni
Visalia Municipal Hospital Guild Grant-in-Aid
Visalia Times-Delta

College of the Sequoias has been approved for participation in the National Defense Student Loan Program. Needy students with superior academic backgrounds may borrow up to \$1000 a year. Students majoring in science, mathematics, engineering, modern foreign language, elementary education, and secondary education will be given first priority. A borrower who becomes a full-time teacher in a public elementary or high school may have up to fifty percent of his loan cancelled.

Small temporary loans are readily available to students through the offices of the Dean of Men and Dean of Women. In addition, more substantial sums of money may be borrowed by qualified students who need financial assistance to complete their education after leaving College of the Sequoias. One requirement for such a loan is that the applicant must have completed at least one year's work at College of the Sequoias or two year's work if this college offers a satisfactory two-year curriculum for the student's major.



GENERAL REGULATIONS

ADMISSION

Graduates of any high school, regardless of high school courses, are admitted to this College, as well as such other persons over eighteen years of age who may be approved for admission by the administration. Courses taken in the college by students over eighteen years of age but who are not high school graduates may be credited by the high schools toward meeting high school graduation requirements.

Non-high school graduates will be required to take a scholastic aptitude test prior to counseling or registration for day classes.

Applicants for admission should secure application admission blanks from the office of the registrar. Registration may not be completed until such blanks have been filled out and returned to the registrar. Transcripts of high school and any college records must be on file in this office sufficiently early to be evaluated before individual counseling. A student may not be counseled or permitted to register before he has taken the scholastic aptitude test and the placement test(s).

Students from institutions of collegiate rank may be admitted upon the presentation of transcript from such institutions, subject to approval by the administration of the College of the Sequoias.

Students from out of the State of California may enroll at the College of the Sequoias without payment of special fees.

Extended Day Students: Any individual 18 years of age, or older, or high school graduates under 18 years of age, may enroll.

MATRICULATION DEFICIENCIES

In the case of an applicant not eligible for clear admission to a standard college or university at the time of his entrance to junior college, deficiencies in both subject and grade requirements for such admission may be removed in the junior college.

Repetition of a college course for the purpose of removing a grade deficiency is permissible only in a case where the student has received a grade below "C".

REGISTRATION

Students are urged to register on the specified days as indicated in the college calendar on page 3. Late registration retards the progress not only of



the student himself but of every class to which he may be admitted. Those who register after registration day will find many classes closed and their choice of subjects limited.

ONLY UNDER EXTRAORDINARY CIRCUMSTANCES WILL REGISTRATION BE PERMITTED AFTER THE END OF THE SECOND WEEK OF CLASS WORK.

It is essential that a transcript of the student's high school record be on file in the office of the registrar before counseling or registration.

Students may register as "Special Students" if they are enrolled for eight units of work or less.

Extended Day Students may register in the administration office during the first week of classes. Counseling services from the counseling staff are available to adults at the time of registration. Appointments may be made to see the counselors. Late registrations are handled through the administration office.

TRANSCRIPTS

Each applicant must file a certified transcript of his high school record with the College of the Sequoias. Applicants who have attended another college or university must, in addition, file transcripts from each college or university attended showing all attempted work. College of the Sequoias reserves the right to evaluate work completed in other colleges. Transfers with acceptable grades will be granted advance standing insofar as the work completed corresponds with that of College of the Sequoias or the lower division work offered in the University of California.

Failure to file transcripts may delay or prevent admission. Transcripts should be sent directly from the high school or college to the College of the Sequoias. All transcripts become the property of the College of the Sequoias and will not be returned.

AMOUNT OF WORK

The normal requirement for a College schedule comprises fifteen units of work. No student will be granted credit in excess of eighteen units a semester, except in the case of a student of proven ability who needs additional units to complete required work for graduation.

COURSES FOR NON-CREDIT STATUS

A student may enroll in a course for non-credit if he receives permission in advance from the instructor and from a dean. In the event of crowded conditions, students taking a course for credit will be given preference. A student will receive neither credit nor a grade when enrolled in a course for non-credit. The privileges of examinations and other facilities for credit in a course are not available to students enrolled for non-credit. A student may not change from non-credit to credit after the last day for adding classes as shown on the calendar.

SCHOLASTIC HONORS

Upon application by the student at the end of each semester, grade point averages are computed to determine the students with 45 or more grade points. This scholastic record entitles the student to temporary membership in Alpha Gamma Sigma, California Junior College Honor Society. Not over

ten percent of the members of each graduating class may become permanent members. Permanent members must have earned a total grade point average of not less than 3.3 and must have been temporary members for three semesters. At commencement they are awarded the Alpha Gamma Sigma pins and certificates and are graduated with honors.

PLACEMENT AND APTITUDE TESTS

Placement tests are given in May, August, and January of each year in English, shorthand, typewriting, and accounting.

For those who wish to take courses in English or speech, the English test is given to determine the placement of the student in the various English courses. An acceptable grade in the English placement test is required for admission to the basic courses such as English 1a, English 10a, and Speech 1a.

For those who have had previous training in either shorthand, typewriting, or both, tests are given to determine the placement of the students in the various shorthand and typewriting classes.

The Scholastic Aptitude Test is given on the same day as the placement tests and is required of all entering students. **A student may not be counseled or permitted to register before he has taken the scholastic aptitude test and the placement test(s).**

ATTENDANCE

Regularity of attendance is fundamental to satisfactory progress in school work. Every student should assume the responsibility of regular attendance, not only because he can thus study most effectively, but also because his attendance assures the financial support which enables the institution to provide better facilities for all students.

The absence policy which has been adopted for College of the Sequoias follows:

- A. Any unexcused absence shall result in "F" for the day's work.
- B. Excused absences are to be made up to the instructor's satisfaction or they shall become unexcused.
- C. Absences in excess of the number of class units must be explained by the student to the satisfaction of the instructor. A student who fails to give such explanation shall be dropped from the class with a grade of "F".
- D. Upon his return to school after having been absent because of illness, a student shall fill out in duplicate the form for Verification of Absence Due to Illness. The instructor issuing the forms shall keep one copy to turn in to the office; the other copy should be retained by the student to present for initialing to all instructors whose classes he has missed. When all instructors concerned have signed this second copy, the student shall leave it at the office where it will be placed in the student's personal file.

PHYSICAL EDUCATION REQUIREMENTS

All students carrying over eight units of work and who are under twenty-five years of age are required by state law to enroll in and successfully complete the regularly prescribed courses in physical education for four semesters, unless proper medical exemptions are presented.

Any full-time student who fails to maintain attendance or is recommended for withdrawal from P. E. classes will have his program reduced to eight units or less.

CONDUCT

Students are expected to set and observe among themselves a proper standard of conduct. Failure to show such respect for order, morality, and personal honor as is expected of good citizens may be sufficient cause for removal from the College.

LEAVES OF ABSENCE

Students finding it necessary to be absent for a period of three days or more are requested to see the dean in order to obtain a leave of absence form. The reason for the absence is indicated on this form, as well as the dates of the proposed absence. If the leave is granted the student has the privilege of making up the work missed in his classes. A leave of absence in no way relieves the student of the responsibility of completing all work to the satisfaction of the instructors involved.

WITHDRAWALS FROM COURSE OR COLLEGE

Students desiring to withdraw from a course or from college should file the proper request with a dean. Any withdrawal filed by the student before the end of the first six weeks of a semester entitles him to receive a "W". After the first six weeks period, a student will receive a "WP" if his course work has been satisfactory, "WF" if his work has been unsatisfactory.

If a student withdraws unofficially from a course or from college and does not follow the proper withdrawal procedure, he will receive the grade of "WP", or "WF".

DEFICIENCY NOTICES

Deficiency notices are mailed to the student at mid-term (the end of the first nine weeks of a semester) for all classes in which his instructors think he is doing unsatisfactory ("D" or "F") work.

A student receiving deficiency notices is urged to discuss with his instructors reasons and possible remedies for his lack of academic success.

GRADING PROCEDURES

All college work is measured in terms of both quantity and quality. The measure of quantity is the unit, and the measure of quality is the grade point.

High school courses for which credit was received in high school may be repeated as remedial work in college for improvement in grade, but no college credit will be granted for such work.

For purpose of graduation or transfer to other collegiate institutions, it is necessary for the student to obtain a "C" average.

"A", "B", "C", and "D" are passing grades, corresponding to excellent, good, average, and passing, "F" failure. An incomplete (inc.) grade will be given only with the special approval of the dean. This approval will be given only in cases of illness or other circumstances beyond the student's

control and will indicate that the student is entitled to all grade points upon satisfactory completion of assignments within the first six weeks of the next semester of college. Failure to remove the incomplete within the designated period will result in a grade of "F".

It is understood that instructors' grades when handed in are final and not subject to change by reason of revision of judgment on the part of the instructor.

When a student repeats a course in which he has received a "D" grade, he will be entitled to the grade and grade points which he earns, but he will receive no additional units. When he repeats a course in which he has received an "F" grade, he will receive the grade, grade points, and units earned. Units and grade points will not be revised for repeated courses in which a "C" grade has been earned.

It is the responsibility of each student to compute his current grade point average for his own guidance in determining whether his scholastic record is meeting his own needs.

As an example of computing a grade point average let us assume a student undertook the subjects shown below and earned the grades as indicated.

Subject	Units Attempted	Units Passed	Grade	Grade Points
Physical Education	1/2	1/2	S	1
English 1a	(3)	0	W(F)	0
Chemistry 1a	5	5	A	20
Zoology 1a	4	4	B	12
Math. C	(3)	0	F	0
Hygiene 1	2	0	W(P)	0
	<u>15 1/2</u>	<u>9 1/2</u>		<u>33</u>

Grade point average is 33 divided by 15 1/2 or 2.12.

Explanation: Since Hygiene 1 was dropped with a "W(P)", it does not count as units attempted. All other subjects which were carried count as units attempted including Math C in which the grade was "F", and English 1a in which the grade was "W(F)".



SCHOLASTIC REGULATIONS

The scholarship average is obtained by dividing the total number of grade points by the total number of units for which the student was registered. Grade points are assigned as follows:

Grade A receives 4 points per unit of the course taken.

Grade B receives 3 points per unit of the course taken.

Grade C receives 2 points per unit of the course taken.

Grade D receives 1 point per unit of the course taken.

Grade F receives 0 point per unit of the course taken.

Satisfactory Scholarship means at least a "C" (2.0) average. To achieve at least a "C" (or 2.0) average, a student must have a minimum of twice as many grade points as he has units attempted.

Transfer Students—Any student transferring from another college shall be subject immediately to these same scholastic regulations.

Warning—Whenever a student receives less than a "C" average for a semester's work, but is not deficient to the point where he is placed on probation, he will receive a warning notice in the mail.

Probation—A student is placed on probation and notice thereof entered on his permanent record card whenever his scholastic record shows either of the following deficiencies:

1. A deficiency of more than 6 grade points in the first semester's record.
2. A cumulative deficiency of more than 8 grade points.

A student who is placed on probation will be notified by letter of his status. He will remain on probation until he attains a cumulative "C" (2.0) average.

Students on probation will be limited to a maximum program of 15½ units except on approval of the Academic Council.

Disqualification—A student on probation will be disqualified if at the end of a semester he falls below a "C" (2.0) average in the units taken that semester.

A student who is disqualified will be so informed by letter and notice of his status entered on his permanent record card. A disqualified student normally shall not be permitted to enroll for the next semester.

A student who has been disqualified and who desires readmission, must petition the Academic Council for readmission, through his counselor. Students who have been disqualified more than once are not re-admissible except under the most unusual circumstances. Any student readmitted after disqualification is on probation until he attains a cumulative "C" (2.0) average.

REQUIREMENTS FOR GRADUATION

The degree of Associate in Arts will be awarded to all students upon the satisfactory completion of the following requirements:

1. A minimum of 60 units of college work with a "C" (2.0) average. To achieve a grade point average of "C", a student must earn twice as many grade points as units attempted.
2. Two units in Physical Education earned at the rate of one half unit per semester.
3. Two units of Community and Personal Hygiene, including the study of fire prevention, home safety, and accident prevention.
4. Three units in the Constitution of the United States, including the principles of state and local government.
5. A minimum of three units in American History, including a study of American institutions and ideals.
6. Six units of English or speech. For students majoring in pre-engineering or trades and industries this requirement is reduced to three units. Non-transfer students majoring in business are required to complete four courses in English, or speech.
7. A major consisting of at least 20 units of satisfactory work in specific subjects or approved related fields. Among the subjects in which a student may major are Agriculture, Art, Building Trades, Business, Drafting, Drama and Speech, Engineering, English (including journalism), Foreign Language, Home Economics, Law Enforcement, *Liberal Arts, Mathematics, Metal Trades, Music, Science, and Social Science.
8. Fifteen of the total 60 units required for graduation must be completed in residence at the College of the Sequoias in order to qualify for graduation.

When preparing a program which meets the requirements for graduation, a student should plan to enroll in as many courses as is feasible in the field in which he is primarily interested. If he is planning to transfer to another institution upon graduation from the College of the Sequoias, the student also should prepare, with the aid of his counselor, an educational program which will enable him to transfer to a college or university of his choice with full junior standing.

*Liberal Arts major requires 20 units, including 1 or more courses in at least 4 of the

5 following fields:

- a. Social Science, including: Psychology, Philosophy.
- b. Science or Mathematics.
- c. Foreign Language.
- d. Music or Art.
- e. English.

EXPLANATION OF SYMBOLS

Example: "BUSINESS 60 α —ELEMENTARY TYPING (2) I II E"

"60 α " is the number of the course in Business.

"(2)" indicates the number of units of credit earned toward a degree in one semester of successful work in this course.

"I" indicates that this course is given in the fall semester of the school year.

"II" after the course indicates that it is given in the spring semester of the school year.

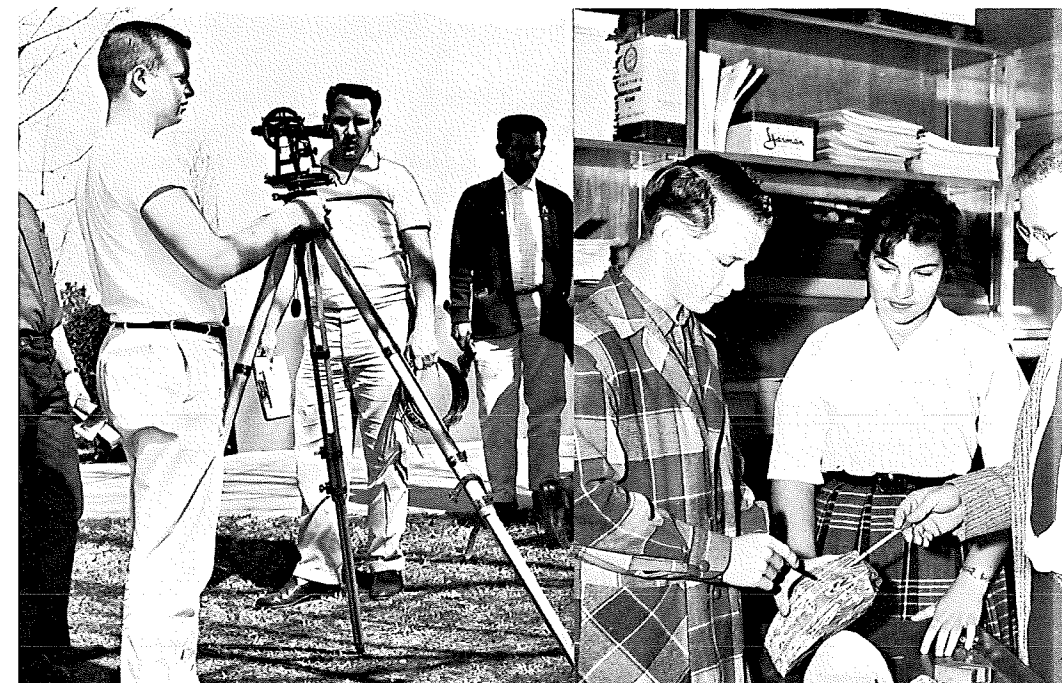
"Yr." after the course indicates that it is a year sequence course, the " α " part given during the fall semester and the "b" part during the spring semester.

"E" after the course indicates that the course is given in the Extended Day program.

COURSES NUMBERED 1-49 are designed for college or university transfer, as well as for credit towards the junior college Associate in Arts Degree.

COURSES NUMBERED 50 THROUGH 99: Though of collegiate grade, most are primarily technical or occupational courses. All may be freely transferred to other institutions.

— 24 —



EXTENDED DAY PROGRAM

GENERAL INFORMATION

The Extended Day Program is an integral part of the college. It offers lower division subjects leading to graduation from college or high school, and work to meet the special needs and interests of adults. A regular class schedule of sixteen weeks is planned for each semester. College terminal and transfer credit is granted. Some non-credit courses of varying lengths also are conducted during semesters.

Most classes meet once or twice a week for two or three hours. They are planned to assist the adult learner. These classes are scheduled for both day and evening, from eight o'clock in the morning to ten o'clock in the evening, Monday through Saturday.

EXTENDED DAY PROGRAM OPPORTUNITIES

Because of the flexibility of its organization and its variety of courses, the Extended Day Program is able to serve individuals of post-high school age irrespective of their background, training, and experience. Its aims include the extension of opportunities for improved living.

The Extended Day School Program serves the young college student who finds it convenient to take courses in the evening hours as part of his regular studies or who wishes to make up deficiencies.

The veteran or older adult who is employed during the daytime may enroll in the evening course of his leisure or vocational interest. He may also earn credit leading to graduation from college or high school.

Of immediate use to students are the subjects in general education, business, semi-professional, and technical fields. Featured, also, are upgrading courses in industry, work experience under supervision, as well as refresher, coaching, and avocational courses.

These services for adults are developed in cooperation with the community through representatives from trades, business, industry, commerce, professions, and community agencies.

FEES

The Extended Day Program charges no tuition. Laboratory, shop, and material fees are assessed according to the amount of materials used. There are no fees for academic courses.



LOWER DIVISION REQUIREMENTS

GENERAL INFORMATION

A student who expects to transfer to the University of California or another institution maintaining equivalent standards must meet three principal kinds of requirements in order to attain full junior standing. These requirements are:

1. The removal of all matriculation (entrance) deficiencies.
2. The completion of the specific requirements for junior standing in the proposed senior college.

3. The completion of the lower division prerequisites for the upper division major and minors. These prerequisites vary according to the major and minors selected and also according to the institution in which the student expects to enroll. All students expecting to transfer to some other college or university should consult the catalog of that institution regarding specific requirements for upper division standing. It is highly desirable that every student decide upon a major as early as possible after entering the junior college. The basic junior standing requirements in certain fields of some of California's colleges and universities are here presented.

UNIVERSITY OF CALIFORNIA

All candidates for admission as undergraduates to **any campus** of the University are required to take the Scholastic Aptitude Test of the College Entrance Examination Board. Arrangements to take this examination should be made by the student directly with the office of the College Entrance Examination Board, Box 27896, Los Angeles 27, Calif.

College of Letters and Science

In addition to the major field of study, the following requirements must be completed with a minimum grade average of 2.0 or "C" (This average applies to those eligible for university admission in freshman standing on the basis of high school record. Those ineligible must maintain a minimum grade point average of 2.4).

A. General requirements.

Subject A or its equivalent.

Physical Education, 4 semesters.

Hygiene, 2 units.

B. English 1a-1b.

C. Foreign Language.

The equivalent of at least 12 units in one foreign language.

High school work will be accepted toward this requirement, will reduce the number of additional units, but will NOT receive university credit.

D. Mathematics. Elementary Algebra and Plane Geometry.

E. Humanities and Fine Arts. At least twelve units chosen from the following:

Art 19, 7a*, 7b*, 6a*, 6b*

English 4a, 4b, 5a, 5b.

French 1d.

German 1d.

History 4a, 4b, 8a, 8b, 10, 17a, 17b (not more than 6 units).

Music 7*, 8*, 10, 16a, 16b, 18*.

Philosophy 6a, 6b.

Spanish 1d.

*Not more than 4 units in the performing arts may be included.

F. Social Sciences. At least 12 units chosen from the following:

Economics 1a, 1b.

Geography 2.

History 4a, 4b, 8a, 8b, 10, 17a, 17b (not more than 6 units).

Political Science 5, 2.

Psychology 1a, 33.

Sociology 1a, 1b.

G. Natural Sciences. At least 12 units chosen from the following:

1. Either Chemistry 1a* or Physics 2a or 4a:

and

2. One of the following:

Biology 1a-1b**.

Botany 1*.

Zoology 1a* or 10.

and

3. Additional from

(Continued on next page)

Anatomy 1*.
Bacteriology 1*.
Chemistry 1b*, 8.
Geography 1.
Geology 1a, 1b.
Mathematics 3a, 3b.
Paleontology 10.
Physics 2b, 3a*, 3b*, 4b*, 4c*.
Physiology 1a, 1c*.
Zoology 1b*.

* At least one course in laboratory science must be included in this area. Third or fourth year high school courses in Biology, Chemistry, or Physics will satisfy this portion of the requirement but will not reduce the total number of college science units required.

** Will be accepted toward the natural science requirement only if both semesters are completed.

UNIVERSITY OF CALIFORNIA AT LOS ANGELES

College of Letters and Science

Admission to Upper Division will be granted upon completion of not less than 60 units of college work with a "C" average and upon fulfillment of the following requirements:

A. General University requirements

Subject A or its equivalent
Physical Education, 4 semesters
Hygiene, 2 units

B. Foreign Language. At least 16 units in not more than two languages.

1. The first two years of high school work in a foreign language will be counted in satisfaction of 4 units of this requirement and each year thereafter as 4 units. Only work of grade "C" or higher may be counted.
2. If a new language is begun on the college level it will not apply on this requirement unless at least 2 semesters are completed.

C. Mathematics

Elementary algebra and plane geometry. If these subjects have not been completed in high school or if they were completed during the tenth, eleventh, or twelfth years with a grade of "D", they must be taken in the junior college without college transfer credit.

D. English composition. (English 1a)—3 units.

At least 3 units with a grade of "C" or better.

E. Natural Sciences

1. At least 5 units in physical science chosen from the following:
Chemistry 1a;
Geography 1;
Geology 1a, 1b;
Mathematics C, D, 1, 3a (not more than 3 units);
Meteorology 1;
Physics 2a, 2b, 4a, 4b, 4c.

2. At least 5 units in biological science chosen from the following:

Bacteriology 1;
Biology 1a, 1b*;
Botany 1;
Physiology 1a, 1c;
Zoology 1a, 1b.

* Will be accepted toward biological science requirement only if both semesters are completed.

F. Social Sciences

1. A year course in history, chosen from the following:

History 4a-4b, 17a-17b, 8a-8b.

2. At least 6 units in social sciences exclusive of history and including courses in at least two subjects, chosen from the following:

Anthropology 10;
Economics 1a;
Geography 2;
Political Science 5, 2;
Psychology 1a;
Sociology 1a.

G. Humanities. Two of the following three groups:

1. Literature. At least 4 units chosen from English 4a, 5a, 5b.

2. Philosophy 6a-6b.

3. The Arts. At least 4 units chosen from Art 6a, 6b;
Music 10, 16a, 16b.



UNIVERSITY OF CALIFORNIA AT LOS ANGELES

College of Applied Arts

This college, established to meet the needs of certain technical and professional fields, offers degree majors in art, music, the theater arts, business education, home economics, physical education, and apparel design, and non-degree curricular in prenursing, preoptometry, preoccupational therapy, and prepublic health.

Admission to Upper Division will be granted upon completion of not less than 60 units of college work with a "C" average and upon completion of the following requirements:

A. General University Requirements

Subject A or its equivalent
Physical Education, 4 semesters
Hygiene, 2 units

B. EITHER:

B1) Foreign Languages. At least 16 units in one foreign language. The first two years of high school work in a foreign language will be counted in satisfaction of 4 units of this requirement and each year thereafter as 4 units. Only work of grade "C" or higher may be counted.

OR

B2) Natural Science. At least 12 units chosen from the following:
Bacteriology 1*, 2;
Biology 1a-1b* (both semesters must be completed);
Botany 1*;
Chemistry 1a*, 1b*, 5*, 8, 9*;
Geography 1, 2;
Geology 1a, 1b;
Mathematics C, D, 1, 3a, 3b, 14a, 14b;
Meteorology 1;
Physics 2a-3a*, 2b-3b*, 4a*, 4b*, 4c*;
Zoology 1a*, 1b*.

The student must include among the courses taken in satisfaction of this requirement at least one course with laboratory work. Such courses are marked with an asterisk.

OR

B3) A combination of foreign language and natural science to be distributed as follows:
Foreign language. At least 16 units in not more than two languages. The first two years of high school work in a foreign language will be counted in satisfaction of 4 units of this

requirement and each year thereafter as 4 units. Only work of grade "C" or higher may be counted. If a language is begun on the college level it will not apply to this requirement unless at least 2 semesters are completed.

Natural Science. At least 9 units chosen from the natural science list above, including at least one course with laboratory work.

C. Mathematics

Elementary algebra and plane geometry. If these subjects were not completed in high school, or if they were completed during the tenth, eleventh, or twelfth years with a grade of "D", they must be taken in the junior college without college transfer credit.

D. Three year-courses chosen from three of the following seven groups, one sequence to be selected from Group 1, 2, or 3.

1. English, Speech

English 1a-1b

Speech 1a-1b

English 1a and Speech 1a

2. Foreign Language. Courses offered in satisfaction of this requirement may not include any of the work offered as part of requirement "B" above. No high school work may be counted on this requirement.

French 1a, 1b, 1c, 1d (any two consecutive courses)

German 1a, 1b, 1c, 1d (any two consecutive courses)

Spanish 1a, 1b, 1c, 1d (any two consecutive courses)

3. Mathematics. Any two of the following courses:

Mathematics C, D or 1, 3a, 3b, 14a, 14b.

4. Social Sciences:

Economics 1a-1b;

Geography 1-2;

History 4a-4b, 17a-17b, 8a-8b;

Political Science 5, 2;

Sociology 1a-1b.

5. Psychology 1a-33.

6. Philosophy 6a-6b.

7. Music, Art (acceptable only when the sequence is not the student's major)

Art 6a-6b;

Music 4a-4b, 12a-12b, 14a-14b, 16a-16b.

SANTA BARBARA COLLEGE

Division of Applied Arts

This division, seeking to develop competence in certain professional fields and to prepare the student to enter his occupation at the end of four years, offers the following majors: education, home economics, music, physical and health education, speech. The following basic requirements must be completed with a minimum grade average of "C":

Art and Music, 4 units. An appreciation course must be completed in at least one department. Activity courses are allowed in the other.

Art 19 (2 units) and Music 10 (2 units) are appreciation courses.

Hygiene, 2 units

English and Speech, 12 units
(Including English 1a-1b and Speech 1a)

Physical Education, 4 semesters

Psychology 1a

Sciences, 9-10 units, including both biological and physical sciences or mathematics, at least one of which must include laboratory work.

Social Sciences, 9 units

EITHER

Political Science 5 and History 17a-17b

OR

Political Science 5 and History 8a-8b

OR

Political Science 5 and History 10 and an elective chosen from the following:

Anthropology 10

Economics 1a, 1b

Geography 1, 2

History 4a, 4b, 8a, 8b

Political Science 2

Sociology 1a, 1b

STANFORD UNIVERSITY

All candidates for admission as undergraduates are expected to take the Scholastic Aptitude Test of the College Entrance Examination Board. Arrangements to take this examination should be made by the student directly with the office of the College Entrance Examination Board, Box 27896, Los Angeles 27, Calif.

All candidates for the Bachelor of Arts and Bachelor of Science degrees are required to complete General, Basic, and Area requirements as follows:

General requirements:

Four semesters of Physical Education
Hygiene 1 or 2

Basic requirements:

1. English 1a-1b
2. History 4a-4b
3. One of the following:
Mathematics (Mathematics D or 1, C, 3a, 3b)
OR
Foreign Language (German, French, Spanish. Attainment of reading ability equivalent to that of course 1d)

Area requirements:

Major courses of undergraduate study are grouped in three general areas, and all students must complete the following requirements in the two areas in which they are NOT majoring:

1. Humanities. At least eight units chosen from any two of these areas:
Fine Arts (Art 19, Music 10)
Philosophy 6a, 6b
Literature (English 4a, 4b, 5a, 5b)
2. Social Sciences. Two of the following courses:
Anthropology 10
Economics 1a
Geography 1
Political Science 5
Psychology 1a
Sociology 1a
3. Natural Sciences. A year of Biology, if no Biology was taken in high school, or one of the following sequences:
Chemistry 1a-1b
Geology 1a-1b
Physics 2a-2b, 3a-3b
Physics 4a, 4b, 4c

(continued on next page)

Students who have taken Biology and Physical Science in high school may take EITHER Biology or one of the series listed above.

Additional requirements for Bachelor of Arts candidates:

1. Philosophy 6a
2. Natural Science. Courses chosen from the following list which, when added to the work completed under Area Requirements, will total 12 or more units:

Anatomy 1

Biology 1a, 1b

Chemistry 1a, 1b

Geology 1a, 1b

Mathematics 3a, 3b, 14a, 14b

Physics 2a, 2b, 3a, 3b, 4a, 4b, 4c

Physiology 1a-1c

— 34 —



UNIVERSITY OF SOUTHERN CALIFORNIA

The first two years in the College of Letters, Arts, and Sciences are devoted to general education and certain lower division subjects required of all students who are candidates for the Bachelor of Arts degree.

- A. Art Appreciation (Art 19) or Music Appreciation (Music 10), 2 units
(Students who transfer with 60 or more units may substitute 2 units of electives in fine arts or music).
- B. English 1a-1b, 6 units
- C. Foreign Language (French, German, or Spanish), 12 units. Twelve units in a single language. A student may enroll in the college course for which his previous high school training has prepared him. However, the student must complete the twelve unit requirement in college work; no unit credit is allowed for work below the college level.
- D. General Studies, 14 units
 - 1. Man and Civilization (History 4a-4b), 6 units
(Students who transfer with 60 units may substitute 6 units in social studies but these units may not be substituted also for item 3 below).
 - 2. Three units to be selected from:
 - a. Problems of Human Behavior (Psychology 1a), 3 units
 - b. Problems of Human Values (Philosophy 6a), 3 units
(Students who transfer with 60 units of advanced standing may substitute 3 units of Psychology for "a" or 3 units of Philosophy for "b").
 - 3. United States History including the study of American institutions and ideals. This requirement for the degree may be met by History 10, History 8a-8b, or History 17a-17b, AND Political Science 5.
- E. Literature (English 4a-4b or 5a-5b), 6 units
- F. Physical Education, 2 units
- G. Health Education (Hygiene 1 or Hygiene 2), 2 units
- H. Science, 11 units
Courses may be chosen from the following offered at College of the Sequoias:
 - Astronomy 10
 - Bacteriology 1
 - Botany 1
 - Chemistry 1a-1b
 - Geology 1a or 1b
 - Physics 2a-2b plus 3a-3b, or 4a-4b-4c
 - Zoology 1a-1b or 10

At least 4 units must be in biological science and at least 4 units in physical science. The student must include at least 3 units in laboratory courses. Each high school unit of chemistry or physics with laboratory may count as 3 units toward the fulfillment of this requirement.

CALIFORNIA STATE COLLEGES

There are several variations in the lower division requirements in the state colleges. The student should consult the major department requirements in the catalog of the particular college which he intends to enter.

FRESNO STATE COLLEGE

The curriculum leading to the A.B. degree at Fresno State College includes:

- A. English and Speech (both oral and written), 6 units.
English 1a and Speech 1a.
- B. Mathematics.
Elementary algebra and plane geometry. If not completed in high school, these courses must be completed in college.
- C. Science, 9 units.
Both physical and biological science must be included.
- D. Social Science, 12 units.
The combination of History 10 and Political Science 5, or History 8a-8b and Political Science 5, or History 17a-17b and Political Science 5 may be offered in satisfaction of the degree requirement for American institutions and ideals. Geography is required of all elementary education majors.
- E. Psychology 1a, 3 units.
- F. Physical Education (four semesters of one-half unit each).
- G. Hygiene, 2 units.
- H. Literature, Philosophy, the Arts, Foreign Language, and Mathematics, 9 units. At least three units must be included in Literature or Philosophy.
- I. Two years of modern foreign language will be required in the following majors: English, Life Science (except Nursing), Physical Science (except Engineering, Geography, and Geology), and Social Science. Chemistry and Physics majors must take German.

CALIFORNIA STATE POLYTECHNIC COLLEGE

The curriculum leading to the B. S. degree at California State Polytechnic College includes:

- A. English 1a-1b, 6 semester units (9 quarter units).
- B. Science, 10 semester units (15 quarter units).
Both physical and biological sciences must be included.

- C. Social Science, 12 semester units (18 quarter units).
The combination of History 10 and Political Science 5, or History 8a-8b and Political Science 5, or History 17a-17b and Political Science 5 may be offered in satisfaction of the degree requirement for American institutions and ideals.
- D. Home Economics 26, 2 semester units (3 quarter units) is suggested for all students. Psychology 1a, 3 semester units (4½ quarter units) is suggested for students entering teaching programs.
- E. Physical Education (four semesters of one-half unit each).
- F. Hygiene, 2 semester units (3 quarter units).
- G. Literature, Philosophy, the Arts, and Mathematics, 9 semester units (13½ quarter units). At least three semester units (4½ quarter units) must be included in Literature or Philosophy.
- H. Mathematics. Students should study the catalog to meet Mathematics requirements for their chosen major curriculum.

SAN JOSE STATE COLLEGE

The curriculum leading to the A. B. degree at San Jose State College includes:

- A. English and Speech, 6 units (English 1a, Speech 1a).
- B. Literature, Philosophy, or the Arts, 8 units. At least three units must be taken in Literature or Philosophy.
- C. Natural Science, 9 units, including both physical and biological sciences.
- D. Social Science, 9 units. History 17a-17b or History 8a-8b or History 10, and Political Science 5 are required. Geography is required of all education majors.
- E. Physical Education, 2 units; Hygiene, 2 units.
- F. General Psychology, 3 units (Psychology 1a).
- G. Electives in General Education, 6 units. Electives may be additional courses in any of the above areas or foreign language, marriage and family life, or mathematics.
- H. Foreign language will be required in the following majors: Chemistry, English, History, Mathematics, Political Science, and Psychology.

SUGGESTED PROGRAMS

AGRICULTURE

Instruction is offered in three major divisions: plant science, animal science, and agricultural mechanics. Courses are designed to prepare students for farming or for jobs requiring practical agricultural training.

Students who plan to transfer to the University of California, to California State Polytechnic College, or to Fresno State College for degree work in agriculture may take their first two years at the College of the Sequoias. Because of the variations in the lower division requirements of the four-year schools, transfer students should consult an agricultural counselor in planning their programs.

The one hundred sixty acre farm laboratory owned by the college is available for demonstration and laboratory work. Animal units including dairy, beef, sheep, swine and poultry are kept at the farm. Crops including alfalfa, irrigated pasture, cotton, corn, cereal crops, deciduous fruits, and grapes are provided for practical field work.

SUGGESTED TWO YEAR COURSE

Plant Science			Animal Science		
	UNITS			UNITS	
English	3	3	English	3	3
Pol. Sci. 5 or 51		3	Pol. Sci. 5 or 51	3	
History 10 or 51	3		History 10 or 51		3
Hygiene		2	Hygiene	2	
P. E.	1	1	P. E.	1	1
Botany 10		3	Zoology 10	3	
Agriculture 58α-58b	3	2	Agriculture 58α-58b	3	2
Agriculture 82	3		Animal Husbandry 7	4	
Agriculture 87	4		Animal Husbandry 8	1	
Agriculture 90		4	Agriculture 65		4
Agriculture 91		2	Agriculture 74	1	
Agriculture 92		2	Agriculture 84		3
Field Crop Majors			Agriculture 87	4	
Agronomy 1		3	Agriculture 90		4
Agriculture 84		3	Agriculture 91		2
Animal Husbandry 7	4		Agriculture 92		2
A. H. Elective	3	or 3	Meat Animal Majors		
Electives	6	2	Agriculture 72		2
	—	—	Agriculture 75		3
	30	30	Agriculture 76	3	
Horticulture Majors			Electives	2	1
Viticulture 1	3			—	—
Pomology 2		3		30	30
Agriculture 81		2	Dairy Majors		
Agriculture 86	3		Agriculture 60	4	
Agriculture 88	4		Agriculture 63	3	
Agriculture 89		3	Agriculture 64		2
Electives	3	0	Electives	0	4
	—	—		—	—
	30	30		32	30

AGRI-BUSINESS

The recent and widespread expansion of urban areas, together with the trend toward large-scale farming enterprises, has resulted in a decrease in the number of those persons gainfully employed in production agriculture and has brought about a striking increase in the numbers of those engaged in the sales and service occupations connected with the production, processing, and marketing of agricultural products and of farm supplies.

'CAREERS AHEAD', a publication of the Association of Land Grant Colleges and Universities, indicates that in contrast to some 2,000 farming opportunities for agricultural college graduates throughout the country there are six times as many opportunities in non-farm occupations—some 12,000, of which 7,500 are in agricultural business.

To qualify students for local positions as sales and service personnel upon graduation from college, the following two-year combination Agri-Business program has been inaugurated at College of the Sequoias.

Suggested Program

FIRST YEAR

FIRST SEMESTER	UNITS	SECOND SEMESTER	UNITS
English	3	English	3
Business 10	3	Business 95	3
Business 70	3	History 10	3
Agriculture 82	3	Hygiene 1	2
Animal Husbandry 7	4	Agriculture Electives	3
Physical Education	½	Business Electives	2
	-----	Physical Education	½
	16½		-----
			16½

SECOND YEAR

FIRST SEMESTER	UNITS	SECOND SEMESTER	UNITS
Speech	3	Agriculture 90	4
Political Science 5	3	Agriculture 91	2
Agriculture 87	4	Business 91	3
Agriculture Electives	3	Agriculture Electives	6
Business Electives	3	Physical Education	½
Physical Education	½		-----
	-----		15½
	16½		

Recommended business electives: Business 80a-b (Elementary Accounting); Business 93 (Survey of Business Law); Business 72 (Merchandising); Business 98 (Personal Efficiency in Business); Business 59 (Filing); Business 68a (Office Machines). Business 60a is required if the student has not already had a course in typewriting.

Recommended agriculture electives: It is preferable to choose the elective courses in Agriculture from a major field of interest, e.g. Plant Science, Animal Science, or Agricultural Mechanics.

ART

Art offerings at the College of the Sequoias are designed to give maximum opportunities to both terminal and transfer students. These courses also provide basic training for students wishing to equip themselves for a vocation as well as for those who may enter other fields but desire to enrich their understanding and appreciation of art.

Transfer students may not be able to follow the suggested outline exactly because of the academic requirements of the University or special art school to which they wish to transfer. Art transfers are asked to secure guidance from their advisors in planning their program.

Suggested Program at State Colleges

FIRST YEAR

FIRST SEMESTER	UNITS	SECOND SEMESTER	UNITS
Art 6a	2	Art 6b	2
Art 7a	2	Art 7b	2
Political Science 5.....	3	History 10	3
Natural Science	3	Natural Science	3
English 1a	3	English 1b	3
Engineering 52	2	Electives—General Education..	2
Physical Education	½	Physical Education	½
	15½		15½

SECOND YEAR

FIRST SEMESTER	UNITS	SECOND SEMESTER	UNITS
Art 12 or 14	2	Art 19	2
Art 25 or 29	2	Art 12 or 14	2
Natural Science	3	Art 23 or 24	2
Speech 1a	3	Social Science Elective	3
Psychology 1a	3	Hygiene 1 or 2	2
Electives — Minor	2	Electives—General Education..	2
Physical Education	½	Electives — Minor	2
	15½	Physical Education	½
			15½



BUSINESS

Modern business as it becomes increasingly complex requires beginning workers with an understanding of business and its relationship to society as a whole. Those students with a basic knowledge of the organizational structure of business and its functions and with a mastery of those skills required of the entering business worker will find their places more quickly and easily in the business environment. While each type of business has characteristics exclusively its own, the fundamental problems of and principles underlying business present great similarities.

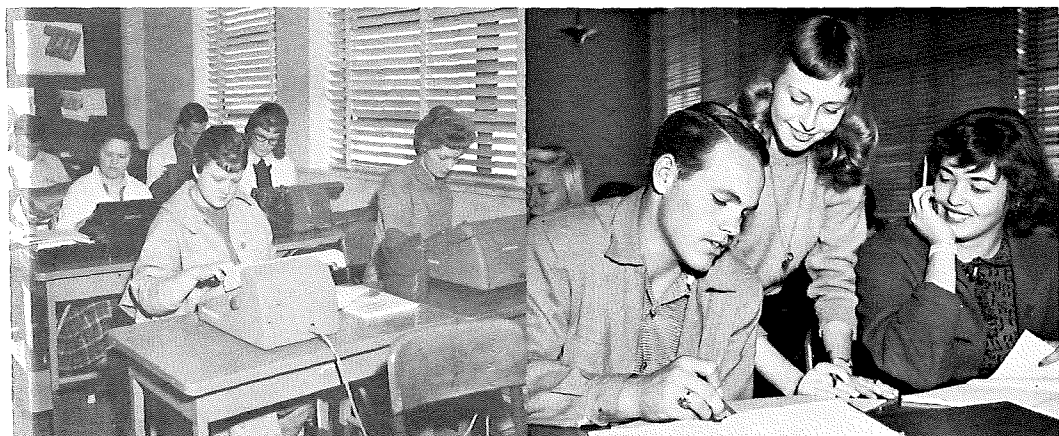
Students of business should register for those courses which will provide them with a foundation upon which, through actual experience in the business world, they may expand their knowledge and thus progress in the careers of their choice.

The following major study fields are available to the students in the Business Department: accounting, general business (clerical), merchandising, secretarial, pre-business administration, business education, and agri-business.

All college transfer courses listed for the Business Department parallel in content those same lower division courses offered at the state colleges and universities. Many of the state colleges will accept for transfer credit any of the business courses regardless of the course number, although they will transfer only the number of units which they allow were the course to be completed on their campus.

In the terminal business classes students are encouraged to work to capacity and to progress as rapidly as is consistent with the business standards required. The skill-building classes in shorthand and typewriting allow placement of the student at the speed level corresponding to the maximum speed previously attained. Progression is determined by speed rather than by course sequence.

Adults are urged to attend the regular day or evening business classes for training in any skills which they need to qualify them for upgrading and promotion or for qualifying for civil service examinations. The American Institute of Banking each year offers special classes for the bank employees of the area.



College Pre-Business Administration Program

Business Administration students planning to transfer to a state college or university should consult the catalog of the school of their choice, as the lower division requirements vary from school to school.

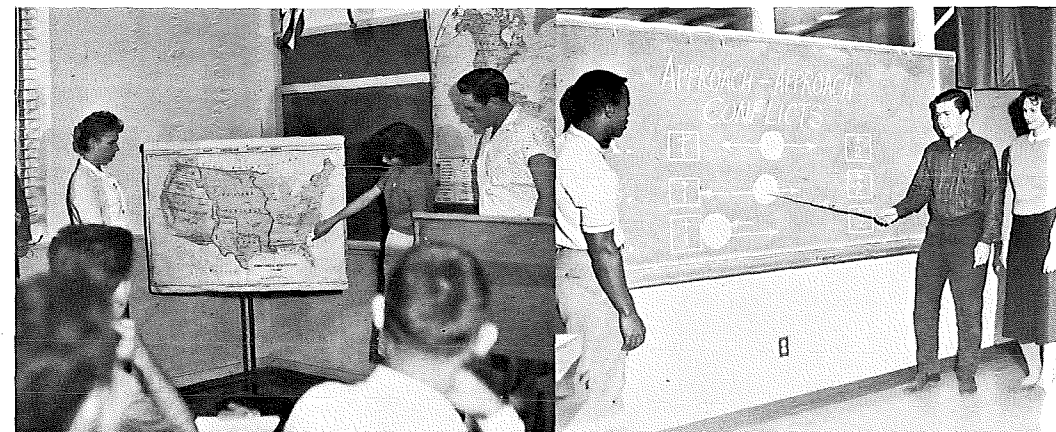
Most state colleges require that the business major complete Business 1a-b and Economics 1a-b in the lower division and demonstrate competency in typewriting and basic mathematics, either by taking a proficiency test or by registering for classes in these subjects in the junior college. Business 10 is an additional requirement for some majors. Students should consult the school catalog for the lower division requirements in the field of their specialization as these requirements do not follow set patterns.

Transfers to the University of California or one of the branches should check carefully to see that they have fulfilled the new mathematics requirements, in addition to having taken Business 1a-b, Economics 1a-b, and Business 18.

Suggested Two-Year General Business (Clerical) Program

FIRST YEAR			
FIRST SEMESTER	UNITS	SECOND SEMESTER	UNITS
Business 60a (Typ.)	2	Business 60b (Typ.)	2
Business 68a (Off. Machs.)	2	Business 68b (Off. Machs.)	2
Business 95 (Bus. Arith.)	3	Business 96b (Bus. Corr.)	3
Business 96a (Bus. Eng.)	3	Business 10 (Mod. Bus.)	3
Business 70 (Sales)	3	Business 98 (Pers. Eff.)	3
Business 59a (Fil.)	1	Hygiene 1 or 2	2
Physical Education	1/2	Physical Education	1/2
	<u>14 1/2</u>		<u>15 1/2</u>
SECOND YEAR			
FIRST SEMESTER	UNITS	SECOND SEMESTER	UNITS
Bus. 61a (Typ.)	2	Business 61b (Typ.)	2
Business 69 (Mach. Trans.)	2	Business 93 (Survey of Law)	3
Pol. Sci. 51	3	Business 87 (Sec'l Acct.)	2
Business 97 (Mging. Money)	3	English or Speech	3
Speech 51a	3	Business 91 (Sm. Bus. Mgmt.)	3
History 51	3	Electives	2
Physical Education	1/2	Physical Education	1/2
	<u>16 1/2</u>		<u>15 1/2</u>

Recommended Electives: Business 13 (Consumer Problems); Art 19 (Art Appreciation); Home Economics 50a-50b (Career Foods); Home Economics 51a-51b (Career Clothing); Music 10 (Music Appreciation); Sociology 26 (Marriage and Family Life); Speech 40 (Radio Speech).



Suggested Two-Year Secretarial Course

Students are registered in the shorthand and typewriting classes corresponding to the speed levels which they attain in the placement tests given in these subjects. Progression from an elementary to an advanced class is based upon speed attained and may not follow the course sequence indicated.

FIRST YEAR			
FIRST SEMESTER	UNITS	SECOND SEMESTER	UNITS
Business 50α, 51α, or 52α (Shthd.)	5	Business 50b, 51b, or 52b (Shthd.)	5
Business 60α, 61α, or 53α (Typ. or Trans.)	2	Business 60b, 61b, or 53b (Typ. or Trans.)	2
Business 10 (Mod. Bus.)	3	Business 59α (Fil.)	1
English, Speech 51 or Business 96α (Bus. Eng.)	3	English, Speech 51 or Business 96b (Bus. Corr.)	3
Business 68α (Off. Mach.)	2	Business 87 (Sec'l Acct)*	2
Physical Education	½	Hygiene 2	2
	15½	Physical Education	½
			15½

*An elective should be substituted if the student has had high school bookkeeping or accounting.

SECOND YEAR			
FIRST SEMESTER	UNITS	SECOND SEMESTER	UNITS
Business 52α (Shthd.)	5	Business 52b (Shthd.)	5
Business 53α (Transcr.)	2	Bus. 53b (Transcr.)	2
English or Speech 51	3	English or Speech 51	3
History 51	3	Business 58b (Sec'l Proc.)	3
Business 58α (Off. Proc.)	3	Political Science 51	3
Physical Education	½	Physical Education	½
	16½		16½

Recommended electives: Business 13 (Consumer Problems); Business 69 (Machine Transcription); Business 91 (Small Business Management); Business 93 (Survey of Business Law); Business 97 (Managing Your Money); Business 98 (Personal Efficiency in Business); Art 19 (Art Appreciation); Home Economics 50α-50b (Career Foods); Home Economics 51α-51b (Career Girls Clothing); Music 10 (Music Appreciation); Sociology 26 (Marriage and Family Life); Speech 40 (Radio Speech).

Suggested One-Year Secretarial Program

FIRST SEMESTER	UNITS	SECOND SEMESTER	UNITS
Business 51α or 52α (Shthd.)	5	Business 51b or 52b (Shthd.)	5
Business 61α or 53α (Typ.)	2	Business 61b or 53b (Typ.)	2
Business 96α (Bus. Eng.) English or Speech	3	Business 96b (Bus. Corr.) English or Speech	3
Business 58α (Off. Proc.)	3	Business 58b (Sec'l Proc.)	3
Business 68α (Off. Machs.)	2	Business 87, (Sec'l Acct.)*	2
Physical Education	½	Business 59α (Fil.)	1
	15½	Physical Education	½
			16½

*An elective should be substituted if the student has had high school bookkeeping or accounting.

For the secretary who wishes during the two-year college program to develop the skills necessary to qualify for a definite field of specialization, the following suggestions are offered:

Technical Secretary: To prepare for a position as a technical secretary in the engineering and scientific field, it is recommended that the student so plan her college secretarial course as to include

- (1) Mathematics, through calculus if possible
- (2) Introductory courses in chemistry and physics or a survey course such as Physical Science 10a-b
- (3) Accounting, with emphasis on budgets
- (4) English and business English as preparation for technical report writing.

Medical Secretary: To prepare for a position as a medical secretary or a medical assistant, it is recommended that the student so organize her college secretarial course as to include

- (1) Science courses such as Anatomy 1, Bacteriology 2, Chemistry 53, Nutrition 8, Physiology 1a
- (2) Psychology 1a and/or Sociology 1a.

Legal Secretary: To prepare for a position as a legal secretary, it is recommended that the student acquire as broad an education as possible and so organize her college secretarial course as to include

- (1) Survey of Business Law and/or Business Law
- (2) Psychology 1a and/or Sociology 1a.



MERCHANDISING

The two-year merchandising curriculum is designed for the student who desires to fit himself for working in a retail store or selling in general. The training given will qualify him for employment either in large or small retail organizations as practical retailing and selling are emphasized. Close contacts are maintained with businesses of the college community in order to offer the student the training that retail firms demand.

Merchandising students working for the Associate in Arts degree need not necessarily take the courses in the exact order illustrated. However, if the student is to put into practice on the job the material learned in the classroom, it is imperative that Business 70 and 72 be taken concurrently.

Suggested Two-Year Merchandising Program

FIRST YEAR			
FIRST SEMESTER	UNITS	SECOND SEMESTER	UNITS
Business 70 (Salesmanship).....	3	Business 74 (Marketing)	3
Business 72 (Retailing)	3	Business 91 (Bus. Mgmt.)	3
Business 96a (Bus. Eng.)	3	Business 96b (Bus. Corr.)	3
Business 10 (Mod. Bus.)	3	Business 60 or 61 (Typ.)	2
Business 95 (Bus. Arith.)	3	Electives	3
Physical Education	½	Physical Education	½
	<hr/>		<hr/>
	15½		14½
SECOND YEAR			
FIRST SEMESTER	UNITS	SECOND SEMESTER	UNITS
Business 80a (Acct.)	4	Business 80b (Acct.)	4
Hygiene 1 or 2	2	Business 93 (Survey of Law) ...	3
English or Speech 51	3	English or Speech	3
History 51	3	Political Science 51	3
Electives	4	Electives	3
Physical Education	½	Physical Education	½
	<hr/>		<hr/>
	16½		16½

Recommended Electives: Economics 10 (Survey of Economics); Sociology 26 (Marriage and Family); Physical Science 10, Art 19 (Art Appreciation); Speech 51a (Practical Speech); Business 98 (Personal Efficiency in Business).

Suggested One-Year Merchandising Program

If the merchandising student plans to enroll for only one year, then it is recommended that he follow the program outlined for the first year.

Suggested Two-Year Accounting Program

FIRST YEAR			
FIRST SEMESTER	UNITS	SECOND SEMESTER	UNITS
Business 80a (Acct.)	4	Business 80b (Acct.)	4
Business 60a or 61a (Typ.)	2	Business 60b or 61b (Typ.)	2
Business 98 (Pers. Eff.)	3	Business 95 or 22 (Bus. Math.)...3-2	
Business 10 (Mod. Bus.)	3	Business 93 (Survey of Law) ...	3
English or Business 96a (Bus. Eng.)	3	English or Business 96b (Bus. Corr.)	3
Electives	1	Hygiene 1 or 2	2
Physical Education	½	Physical Education	½
	<hr/>		<hr/>
	16½		16½

SECOND YEAR

FIRST SEMESTER	UNITS	SECOND SEMESTER	UNITS
Business 81a (Adv. Acct.)	4	Business 81b (Adv. Acct.)	4
Speech or English	3	Speech 51 or English	3
Business 68a (Off. Machs.)	2	Business 68b (Off. Machs.)	2
Psychology 51	3	Business 59a (Fil.)	1
History 10 or 51	3	Political Science 5 or 51	3
Physical Education	½	Electives	3
	<u>15½</u>	Physical Education	½
			<u>16½</u>

Students who are preparing to qualify as Certified Public Accountants under the California Accountancy Act should include: Business 18 (Business Law) in place of Business 93.

DENTISTRY

University of California at Berkeley and at Los Angeles

The College of Dentistry offers a program leading to the degree of Doctor of Dental Surgery, based upon two years of college pre-dental work.

Suggested Program

FIRST YEAR

FIRST SEMESTER	UNITS	SECOND SEMESTER	UNITS
English 1a or Speech 1a	3	English 1b or Speech 1b	3
Chemistry 1a	5	Chemistry 1b	5
Zoology 1a	4	Zoology 1b	4
History 10	3	Political Science 5	3
Physical Education	½	Physical Education	½
	<u>15½</u>		<u>15½</u>

SECOND YEAR

FIRST SEMESTER	UNITS	SECOND SEMESTER	UNITS
Chemistry 8	3	Chemistry 5	3
Chemistry 9	3	Physics 2b	3
Physics 2a	3	Physics 3b	1
Physics 3a	1	Psychology 33	3
Psychology 1a	3	Foreign Language**	4
Foreign Language*	4	Hygiene 1 or 2	2
Physical Education	½	Physical Education	½
	<u>17½</u>		<u>16½</u>

* Must be at least second semester college level. (Two years of high school foreign language will be evaluated as first semester college level.)

** Must be at least third semester college level.

University of Southern California

The College of Letters, Arts and Sciences offers a program leading to the degree of Bachelor of Science in dentistry, based upon three years of college pre-dental work, and requirements in the first two years of D. D. S. curriculum.

Suggested Program

FIRST YEAR

FIRST SEMESTER	UNITS	SECOND SEMESTER	UNITS
Chemistry 1a	5	Chemistry 1b	5
Foreign Language	4	Foreign Language	4
History 10	3	Political Science 5	3
Zoology 1a	4	Zoology 1b	4
Physical Education	½	Physical Education	½
	16½		16½

SECOND YEAR

FIRST SEMESTER	UNITS	SECOND SEMESTER	UNITS
Art 19 or Music 10	2	Psychology 1a	3
Foreign Language	4	Hygiene 1 or 2	2
History 4a	3	History 4b	3
Physics 2a	3	Physics 2b	3
Physics 3a	1	Physics 3b	1
English 1a	3	English 1b	3
Physical Education	½	Art 25a	1
	16½	Physical Education	½
			16½

The university offers organic chemistry in upper division but will accept Chemistry 8 and 9 for credit toward pre-dental requirements. Literature requirements (English 4a-4b or 5a-5b) as well as Psychology 1a or Philosophy 6a, may be taken in the lower division.

For the pre-dental program leading to the degree of Doctor of Dental Surgery without the above degree, consult the university catalog and counselor.



DRAFTING

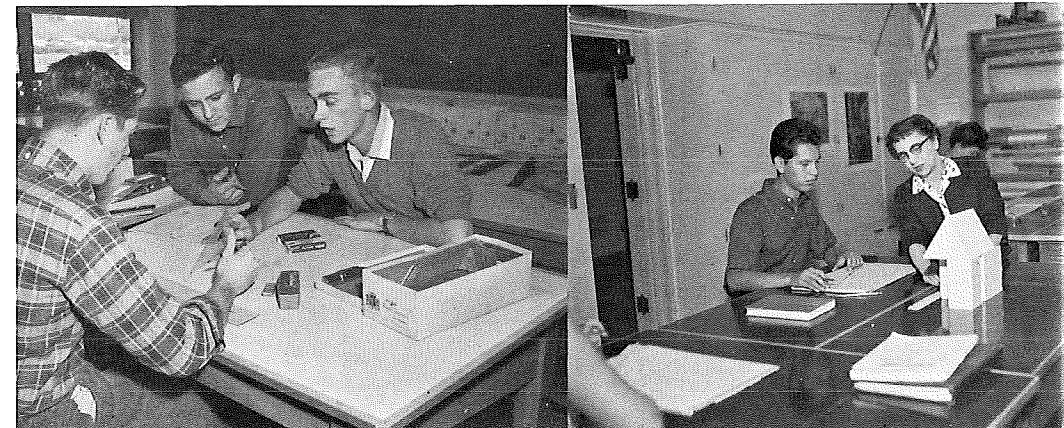
This curriculum is designed to train men and women for a career in either Architectural Drawing or Engineering Drawing at the completion of two years of junior college education.

Suggested Two-Year Program in Drafting

FIRST YEAR			
FIRST SEMESTER	UNITS	SECOND SEMESTER	UNITS
Engineering 52	2	Engineering 22	3
Mathematics D	3	Engineering 23	3
History 10 or 51	3	Mathematics C	3
English	3	English or Speech	3
Electives	4	Electives	3
Physical Education	½	Physical Education	½
	15½		15½
SECOND YEAR			
FIRST SEMESTER	UNITS	SECOND SEMESTER	UNITS
Architecture 1a	3	Architecture 1b	3
Engineering 24	3	Engineering 26	3
Engineering 1a	3	Engineering 1b	3
Political Science 5 or 51	3	Hygiene 1 or 2	2
Mathematics 20	2	Electives	5
Electives	2	Physical Education	½
Physical Education	½		16½
	16½		

Suggested electives: Art 6a, Art 7a, Art 19, Chemistry 53, Mechanics 64a-64b, Mechanics 65a, Mathematics 3a-3b, Physical Science 10, Physics 2a-2b.

Students must include a minimum of 15 units of Architectural and Engineering Drawing.



EDUCATION

The State of California requires a credential of the proper type for teaching in the public schools. Among the credentials issued are the Kindergarten-Primary, General Elementary, Junior High School, Special Secondary, General Secondary, and Junior College. Students planning to secure one of these credentials should follow the lower division program of the institution to which they wish to transfer.

Suggested Program for Elementary Education at the State Colleges

FIRST YEAR			
FIRST SEMESTER	UNITS	SECOND SEMESTER	UNITS
English 1a	3	English 1b	3
Political Science 5	3	Education 30	2
Art or Music Elective	2	History 10	3
*Biology 1a	3	*Biology 1b	3
Music 21	1	Music 9	3
Electives	3	Elective	1
Physical Education	½	Physical Education	½
	15½		15½
SECOND YEAR			
FIRST SEMESTER	UNITS	SECOND SEMESTER	UNITS
Geography 1 or 2	3	Social Science Elective	3
Physical Science Elective	3	Hygiene 1 or 2	2
Psychology 1a	3	Art or Music Elective	2
Speech 1a	3	Electives (Minor)	8
Mathematics 10	3	Physical Education	½
Physical Education	½		
	15½		15½

*The San Jose State transfer should substitute Nature Study 10a-10b and should include English 5a-5b in the sophomore year.

ENGINEERING AND PHYSICAL SCIENCE

College of the Sequoias offers a two year course that will enable the student to receive the Associate in Arts Degree and to complete a program of study that is comparable to the first two years in most four year institutions of higher learning. In order to complete the necessary lower division work in two years it is necessary that the student complete trigonometry and two years of algebra in high school. It is strongly recommended that introductory courses in chemistry and physics also be completed in high school.

If the student is not fully prepared, it will take more than two years to complete the lower division requirements of most institutions.

Suggested Transfer Program

FIRST YEAR			
FIRST SEMESTER	UNITS	SECOND SEMESTER	UNITS
Chemistry 1a	5	Chemistry 1b	5
Engineering 22	3	Engineering 23	3
History 10	3	English 1a	3
Mathematics 3a	3	Mathematics 3b	3
Mathematics 1	3	Physics 4a	4
Physical Education	½	Physical Education	½
	17½		18½

SECOND YEAR			
FIRST SEMESTER	UNITS	SECOND SEMESTER	UNITS
Engineering 1a	3	Engineering 35	3
Engineering 8	3	Mathematics 14b	5
Mathematics 14a	5	Physics 4c	4
Physics 4b	4	Political Science 5	3
Technical Elective	3	Hygiene 1 or 2	2
Physical Education	½	Physical Education	½
	18½		17½

This is a general program designed to meet most requirements in the engineering fields. Those students preparing for transfer to other institutions in other physical science specialties should check the specific requirements of the institution of their choice, and modify the above program to fill those requirements.

HOME ECONOMICS

The courses in the Home Economics Department of the College of the Sequoias have been planned both to satisfy professional and vocational objectives and to contribute to the general education of the students.

Studies indicate that there will continue to be a shortage of qualified professional home economists in the foreseeable future. Job opportunities are varied and well-paid.

College of the Sequoias courses can lead to a Bachelor of Arts degree and/or special or general secondary teaching credential at a state college. The curriculum also provides courses for those planning to transfer to a University which offers the Bachelor of Science degree.

Professional and commercial career opportunities in addition to teaching include home advisor (adult or 4-H), dietetics, institutional management, home economics, journalism, experimental foods, household equipment demonstration and testing, consumer education, public relations (foods, utility, pattern companies, etc.), interior decoration, nursery school supervision, social service, public health, radio and TV.

For the terminal student desiring to major in homemaking to broaden her general education, the department offers courses which enrich personal and family life through the development of basic concepts and skills. It is recommended that these students consult with the Business Education department for elective areas in which they might acquire skills useful in supplementing the family income in time of need.

Transfer to University of California at Berkeley or Davis

FIRST YEAR			
FIRST SEMESTER	UNITS	SECOND SEMESTER	UNITS
Zoology 10	3	Chemistry 1a	5
Home Economics 10a	2	Home Economics 22	2
Home Economics 15	2	Political Science 5	3
History 10	3	English 1b or Speech 1a	3
Mathematics D	3	Art 6a	2
English 1a or Speech 1a	3	Physical Education	½
Physical Education	½		
	17½		15½

SECOND YEAR

FIRST SEMESTER	UNITS	SECOND SEMESTER	UNITS
Chemistry 8	3	Home Economics 12b	3
Economics 1a	3	Psychology 1a	3
Home Economics 12a	3	Hygiene 2	2
Home Economics 24	2	Physiology 1a	3
Bacteriology 2	4	Physiology 1c	1
Physical Education	½	Economics 1b	3
	<hr/>	Physical Education	½
	15½		<hr/>
			15½

Suggested Transfer Program to State College

FIRST YEAR

FIRST SEMESTER	UNITS	SECOND SEMESTER	UNITS
English 1a	3	English 1b	3
Home Economics 24	2	Home Economics 22	2
Home Economics 10a	3	Nutrition 8	2
Home Economics 15	2	Home Economics 10b	3
Chemistry 2a	3	Chemistry 2b	3
Art 6a	2	Psychology 1a	3
Physical Education	½	Physical Education	½
	<hr/>		<hr/>
	15½		16½

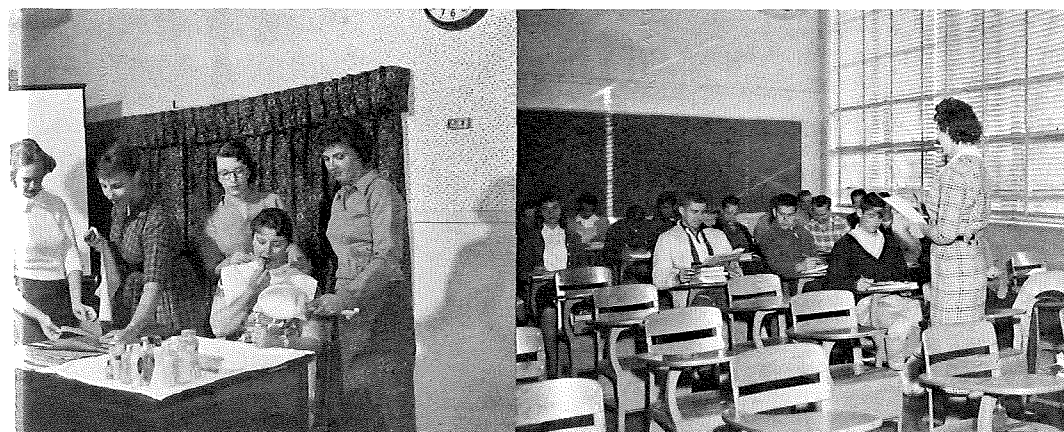
SECOND YEAR

FIRST SEMESTER	UNITS	SECOND SEMESTER	UNITS
Speech 1a	3	Home Economics 12b	3
Home Economics 12a	3	Physiology 1a	3
Hygiene 2	2	Physiology 1c	1
Political Science 5	3	History 10	3
Social Science*	4	Home Economics 26	2
Physical Education	½	Home Economics 13	2
	<hr/>	Physical Education	½
	15½		<hr/>
			14½

Dietetics major should take Chemistry 1a, Chemistry 1b, Chemistry 8.

*San Jose transfers — Substitute Economics 1a

California Polytechnic transfers — Substitute Bacteriology 2



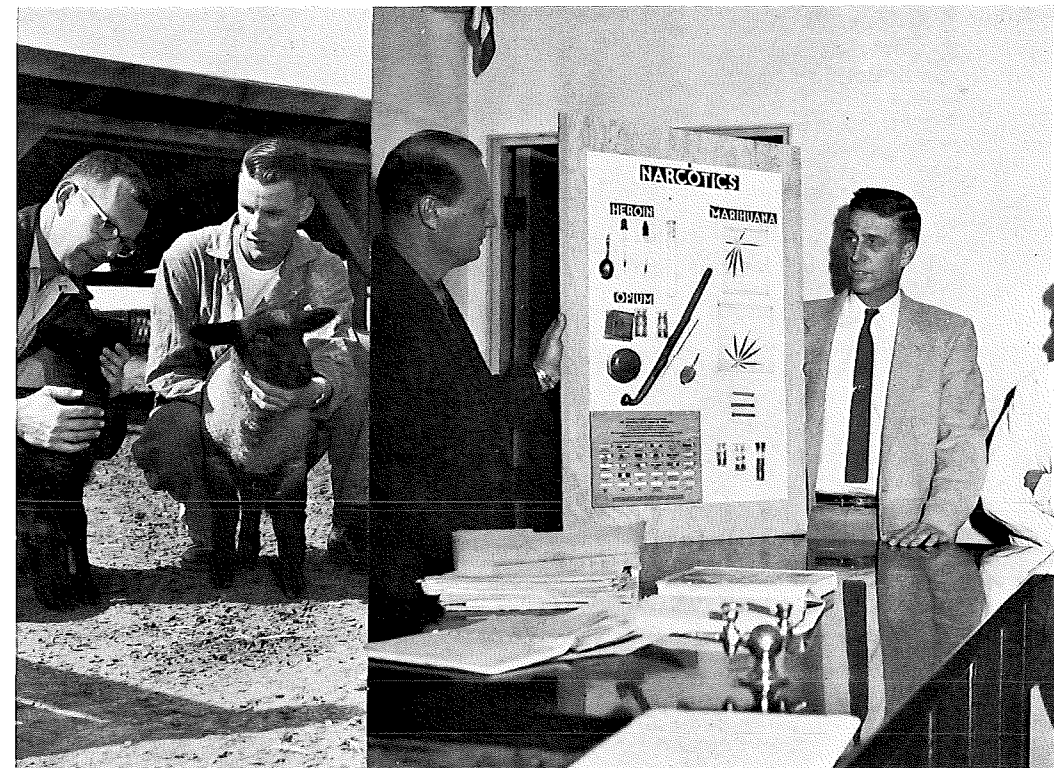
Suggested Two-Year Terminal Program

FIRST YEAR

FIRST SEMESTER	UNITS	SECOND SEMESTER	UNITS
English	3	Political Science 51	3
Home Economics 51a	2	Home Economics 51b	2
Psychology 51	3	Home Economics 57	2
Art 19	2	Nutrition 8	2
Home Economics 24	2	Home Economics 26	2
Home Economics 50a	2	Home Economics 50b	2
Physical Education	½	Home Economics 13	2
	<hr/>	Physical Education	½
	14½		<hr/>
			15½

SECOND YEAR

FIRST SEMESTER	UNITS	SECOND SEMESTER	UNITS
Hygiene 2	2	Home Economics 22	2
Art 24	2	Home Economics 51c	2
Business 97	3	English or Speech	3
Economics 10	3	Electives	5
Electives	5	Electives	8
Physical Education	½	Physical Education	½
	<hr/>		<hr/>
	15½		15½



LAW ENFORCEMENT

This curriculum is designed to train men and women for police service in law enforcement agencies.

In addition to the general requirements for admission to the College the student must possess certain basic personality and intelligence qualifications, a part of which is satisfactory scholastic record in high school; information indicating above average social adjustment as shown by a letter from his hometown law enforcement official which verifies no significant police record. Absolute integrity and high moral character are imperative for success as a law enforcement officer.

In-service training is provided in this curriculum for men and women already employed by any law enforcement agency. This type of student may enroll, upon consultation with the instructor, for the entire course or for those subjects in which he is interested.

The two-year terminal course as outlined below fulfills the requirements for the degree of Associate in Arts. The student who is planning to continue his training at a college or university should consult with the law enforcement adviser for proper programing.

Suggested Two-Year Program in Law Enforcement

FIRST YEAR

FIRST SEMESTER	UNITS	SECOND SEMESTER	UNITS
English	3	Speech	3
History 51	3	Political Science 51	3
Political Science 10a.....	3	Political Science 10b	3
Law Enforcement 51	2	Law Enforcement 52	2
Electives	4	Law Enforcement 54	2
Physical Education 4a	½	Electives	2
	<hr/>	Physical Education 13a	½
	15½		<hr/>
			15½

SECOND YEAR

FIRST SEMESTER	UNITS	SECOND SEMESTER	UNITS
Psychology 51	3	Natural Science	3
Hygiene 1 or 2	2	Law Enforcement 50b	2
Law Enforcement 50a	2	Law Enforcement 53	3
Law Enforcement 55	3	Law Enforcement 57	3
Law Enforcement 58a	1	Law Enforcement 58b	1
Electives	4	Electives	3
Physical Education	½	Physical Education	½
	<hr/>		<hr/>
	15½		15½

MEDICINE

University of California at Berkeley and at Los Angeles

Suggested Program

FIRST YEAR			
FIRST SEMESTER	UNITS	SECOND SEMESTER	UNITS
Chemistry 1a	5	Chemistry 1b	5
English 1a or Speech 1a	3	English 1b or Speech 1b	3
Foreign Language or Elective ..	4	Foreign Language or Elective ..	4
History 17a	3	History 17b	3
Physical Education	½	Physical Education	½
	<hr/>		<hr/>
	15½		15½

SECOND YEAR			
FIRST SEMESTER	UNITS	SECOND SEMESTER	UNITS
Zoology 1a	4	Zoology 1b	4
Chemistry 8	3	Chemistry 5	3
Political Science 5	3	Hygiene 1 or 2	2
Philosophy 6a	3	Philosophy 6b	3
English 5a or History 4a	3	English 5b or History 4b	3
Physical Education	½	Physical Education	½
	<hr/>		<hr/>
	16½		15½

University of Southern California

Suggested Program

FIRST YEAR			
FIRST SEMESTER	UNITS	SECOND SEMESTER	UNITS
Chemistry 1a	5	Chemistry 1b	5
English 1a	3	English 1b	3
Foreign Language*	4	Foreign Language*	4
Zoology 1a	4	Zoology 1b	4
Physical Education	½	Physical Education	½
	<hr/>		<hr/>
	16½		16½

SECOND YEAR			
FIRST SEMESTER	UNITS	SECOND SEMESTER	UNITS
Psychology 1a	3	Chemistry 5	3
History 4a	3	History 4b	3
Physics 2a	3	Physics 2b	3
Physics 3a	1	Physics 3b	1
History 10	3	Political Science 5	3
Art 19 or Music 10	2	Hygiene 1 or 2	2
Physical Education	½	Physical Education	½
	<hr/>		<hr/>
	15½		15½

* Continuation of French or German recommended.
 The University offers organic chemistry in upper division but will accept Chemistry 8 and 9 for credit toward pre-medical requirements. Consult your counselor.

MUSIC

The following courses are offered to the student majoring in music to enable him to obtain the Associate in Arts degree and complete a program that is comparable to the first two years of many other institutions. Besides the music courses listed below, the music major should carry 45 units of general education work in line with the graduation requirements established by the College of the Sequoias and the lower division program of the institution to which they wish to transfer.

Music Transfer to State Colleges

Suggested Program

FIRST YEAR

FIRST SEMESTER	UNITS	SECOND SEMESTER	UNITS
Music 4a (Musicianship)	1	Music 4b (Musicianship)	1
Music 12a (Beginning Theory) ..	3	Music 12b (Beginning Theory) ..	3
Music 7, 8, 18, 19*	1	Music 7, 8, 18, 19*	1
English 1a	3	English 1b	3
Science	3	Political Science 5	3
History 10	3	Science	3
Electives	2	Physical Education	½
Physical Education	½		
	16½		14½

SECOND YEAR

FIRST SEMESTER	UNITS	SECOND SEMESTER	UNITS
Music 5a (Adv. Musicianship) ..	1	Music 5b (Adv. Musicianship) ..	1
Music 14a (Adv. Theory)	3	Music 14b (Adv. Theory)	3
Music 7, 8, 18, 19*	1	Music 7, 8, 18, 19*	1
Speech 1a	3	Psychology 1a	3
Science	3	Hygiene 1 or 2	2
Social Science Elective	3	General Education Electives ..	5
Elective	2	Physical Education	½
Physical Education	½		
	16½		15½

*All music majors are required to participate in at least one music ensemble group per semester according to their individual interests. Choose from Music 7abcd—orchestra, Music 8abcd—choir, Music 18ab—marching band, and Music 19ab—concert band.

It is recommended that music majors choose electives from the following courses: Music 1ab—beginning strings, class instruction; Music 3ab—beginning woodwinds, class instruction; Music 6ab—beginning brass and percussion, class instruction; Music 20—opera appreciation; Music 21—beginning piano, class instruction; Music 22ab—intermediate piano, class instruction; and Music 30abcd, elementary voice, class instruction. Music majors should not take Music 10.

NURSES' TRAINING

Students may obtain nursing education in (a) hospitals operated by universities (University of California, University of California at Los Angeles, Stanford); (b) hospitals affiliated with state colleges; or (c) hospital training schools. For admission to a university program, the student must obtain regular junior standing in that university and must complete pre-nursing courses. Both the Bachelor of Science degree and the Registered Nurse Certificate will be granted upon the completion of three years of university study after obtaining junior standing.

For admission to a state college program, the student may complete the first year in the junior college, but should then transfer for completion of three additional years of training. The Bachelor of Science degree and the Registered Nurse Certificate will be awarded upon completion of four years of study provided the last three years are completed in the state college.

Before admission to hospital training schools, the student is advised to complete at least thirty units of a college pre-nursing course with a "C" average.

A thirty-six month training program is required in most schools of nursing by the California State Board of Nurse Examiners. An exception is made in some schools which allow nine months time credit for work completed in the junior college.

An applicant must be at least eighteen years of age, must be a high school graduate, and must have completed satisfactorily a course in general chemistry. Most schools of nursing are now requiring at least a year, and recommending two years, of college work for entrance. This preparation should include science, psychology, and English.

Students are urged to visit schools of nursing in order to obtain details of hospital school requirements and to make their choices before enrolling in college courses. Many hospital schools have specific subject requirements which must be met.

— 56 —



UNIVERSITIES AND UNIVERSITY HOSPITAL TRAINING SCHOOLS

This suggested program leads to a Bachelor of Science degree and a certificate of nursing.

FIRST YEAR

FIRST SEMESTER	UNITS	SECOND SEMESTER	UNITS
English 1a	3	English 1b	3
Foreign Language	4	Foreign Language	4
Anatomy 1	4	Chemistry 1a	5
History 4a	3	History 4b	3
Nutrition 8	2	Hygiene 2	2
Physical Education	½	Physical Education	½
	<hr/>		<hr/>
	16½		17½

SECOND YEAR

FIRST SEMESTER	UNITS	SECOND SEMESTER	UNITS
Chemistry 8	3	Bacteriology 1	5
Sociology 1a	3	Physiology 1a and 1c.....	5
English 5a or Philosophy 6a...	3	English 5b or Philosophy 6b...	3
History 10	3	Political Science 5	3
Psychology 1a	3	Physical Education	½
Physical Education	½		
	<hr/>		<hr/>
	15½		16½

Fresno State College Nursing Curriculum

FIRST YEAR

FIRST SEMESTER	UNITS	SECOND SEMESTER	UNITS
Chemistry 2a	3	Physiology 1a, 1c	4
Anatomy 1	4	Psychology 1a	3
History 4a	3	English 1a	3
Sociology 1a	3	History 10	3
Nutrition 8	2	Elective	2
Physical Education	½	Physical Education	½
	<hr/>		<hr/>
	15½		15½

Hospital Training Schools

Either of the following programs is acceptable foundation work for the training course in a Hospital School of Nursing. The two-year program is recommended.

Suggested Two-Year Program

FIRST YEAR

FIRST SEMESTER	UNITS	SECOND SEMESTER	UNITS
Anatomy 1	4	Hygiene 2	2
History 51	3	Political Science 51	3
English	3	English	3
Psychology 51 or 1a.....	3	Chemistry 53	3
Electives	2	Electives	3
Physical Education	½	Physical Education	½
	<hr/>		<hr/>
	15½		14½

		SECOND YEAR	
FIRST SEMESTER	UNITS	SECOND SEMESTER	UNITS
Bacteriology 2	4	Physiology 1a, 1c	5
Psychology 1a or 33	3	Sociology 1b	3
Sociology 1a	3	Nutrition 8	2
Speech 51a	3	Electives	4
Electives	2	Physical Education	½
Physical Education	½		
	<hr/>		<hr/>
	15½		14½

Suggested One-Year Program

FIRST SEMESTER	UNITS	SECOND SEMESTER	UNITS
Bacteriology 2 or Chemistry 53	4-3	Chemistry 53 or Zoology 10.....	3
Anatomy 1	4	Physiology 1a, 1c	4
English	3	Psychology 51 or 1a	3
Hygiene 2	2	Nutrition 8	2
Electives	2	Electives	3
Physical Education	½	Physical Education	½
	<hr/>		<hr/>
	15½		15½

VOCATIONAL NURSING

To extend the nursing services needed in hospitals and homes, California has provided for the examining and licensing of trained Vocational Nurses. Following the completion of the College of the Sequoias full-time, full-year program, a graduate of this program is recommended by the college to be examined and licensed. Offered on the Exeter campus in association with local area hospitals, this program is also recognized by the college as the equivalent of 45 terminal units toward completion of the Associate in Arts degree.

Applications, obtainable from the main office of the college, must be submitted by August 15, 1960 to ensure consideration for enrollment in September. Prospective students also will be required to complete health and aptitude tests to determine their eligibility for enrollment.

PHARMACY

University of California, Medical Center, San Francisco

The School of Pharmacy offers a four-year course leading to the degree of Doctor of Pharmacy based upon two years of college pre-pharmacy work.

Suggested Program

FIRST YEAR			
FIRST SEMESTER	UNITS	SECOND SEMESTER	UNITS
English 1a or Speech 1a.....	3	English 1b or Speech 1b.....	3
Chemistry 1a	5	Chemistry 1b	5
Economics 1a or Psychology 1a	3	Economics 1b or Psychology 33	3
Hygiene 1 or 2	2	Botany 1	5
History 10	3	Physical Education	½
Physical Education	½		
	<hr/>		<hr/>
	16½		16½

SECOND YEAR

FIRST SEMESTER	UNITS	SECOND SEMESTER	UNITS
Zoology 1a	4	Zoology 1b	4
Physics 2a	3	Physics 2b	3
Physics 3a	1	Physics 3b	1
Mathematics 1	3	Mathematics 3b	3
Mathematics 3a	3	Political Science 5	3
Physical Education	½	Physical Education	½
	<u>14½</u>		<u>14½</u>

University of Southern California

The School of Pharmacy offers a four-year course leading to the degree of Doctor of Pharmacy, based upon two years of college pre-pharmacy work.

Mathematics C and Mathematics D must be included in the pre-pharmacy program if they were not completed in high school, and will receive transfer credit.

Suggested Program

FIRST YEAR

FIRST SEMESTER	UNITS	SECOND SEMESTER	UNITS
Chemistry 1a	5	Chemistry 1b	5
English 1a	3	English 1b	3
History 4a	3	History 4b	3
Political Science 5	3	History 10	3
Physical Education	½	Hygiene 1 or 2	2
	<u>14½</u>	Physical Education	½
			<u>16½</u>

SECOND YEAR

FIRST SEMESTER	UNITS	SECOND SEMESTER	UNITS
Zoology 1a	4	Zoology 1b	4
Economics 1a	3	Economics 1b	3
Physics 2a	3	Physics 2b	3
Physics 3a	1	Physics 3b	1
Psychology 1a	3	Elective	4
Elective	2	Physical Education	½
Physical Education	½		
	<u>16½</u>		<u>15½</u>

PHYSICAL EDUCATION

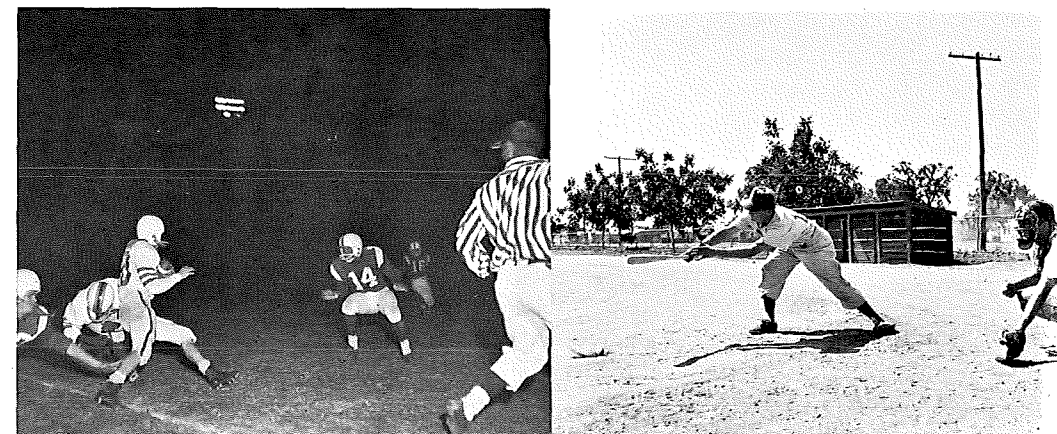
Students majoring in Physical Education are encouraged to study carefully the course requirements in the college or university to which they expect to transfer in order that they may complete the proper lower division requirements in the junior college. The major programs listed below are suggested:

Physical Education for Men — State Colleges

FIRST YEAR	UNITS	SECOND YEAR	UNITS
English 1a-1b	3 3	Speech 1a	3
History 10	3	Anatomy 1	4
Political Science 5	3	Physiology 1a, 1c	4
Chemistry 53 or 2a	3	Art 19 or Music 10	2
Fundamentals of Foot- ball 25a	2	Psychology 1a	3
Fundamentals of Track 25c	2	Fundamentals of Basketball 25d	2
Orientation in Physical Education 31	2	Fundamentals of Baseball 25b	2
Hygiene 1	2	Hygiene 3	1
Sociology 1a-1b	3 3	Electives	5 4
Electives	2	Physical Education	½ ½
Physical Education	½ ½		
	16½ 15½		15½ 15½

Physical Education for Women — State Colleges

FIRST YEAR	UNITS	SECOND YEAR	UNITS
English 1a-1b	3 3	Speech 1a	3
History 10	3	Anatomy 1	4
Political Science 5	3	Physiology 1a, 1c	4
Chemistry 53 or 2a	3	Art 19 or Music 10	2
Fundamentals of Rhythm and Dance 30a	2	Psychology 1a	3
Fundamentals of Individual Sports 30e	2	Fundamentals of Team Sports 30cd	2 2
Orientation in Physical Education 31	2	Introduction of Aquatics 30b	2
Hygiene 2	2	Hygiene 3	1
Sociology 1a-1b	3 3	Electives	5 2
Electives	2	Physical Education	½ ½
Physical Education	½ ½		
	16½ 15½		15½ 15½



TRADES AND INDUSTRIES

Building Trades

A training curriculum in the building trades with carpentry as a basic course, has been set up as an integral unit of the regular two-year junior college program. Manipulative instruction in carpentry, painting, plumbing, and dry wall construction under the supervision of master craftsmen is given to approved students. Manipulative training is given each year on one major project, such as a residence.

Trade technical class instruction is given in fundamental and advanced construction procedures, in blueprint reading, in estimating and contracting procedure, and in structural stresses and strains including simple truss designs. Trade related subjects, including drafting, mathematics, English, accounting, business law, job ethics, economics, history, political science, physical education, and hygiene are required as part of the training.

Upon leaving school or graduating, the student may ask the trade advisory committee of the California Division of Apprenticeship Standards to evaluate his training and experience toward the completion of an apprenticeship and the attainment of a journeyman's status in the carpentry trade.

Suggested Program

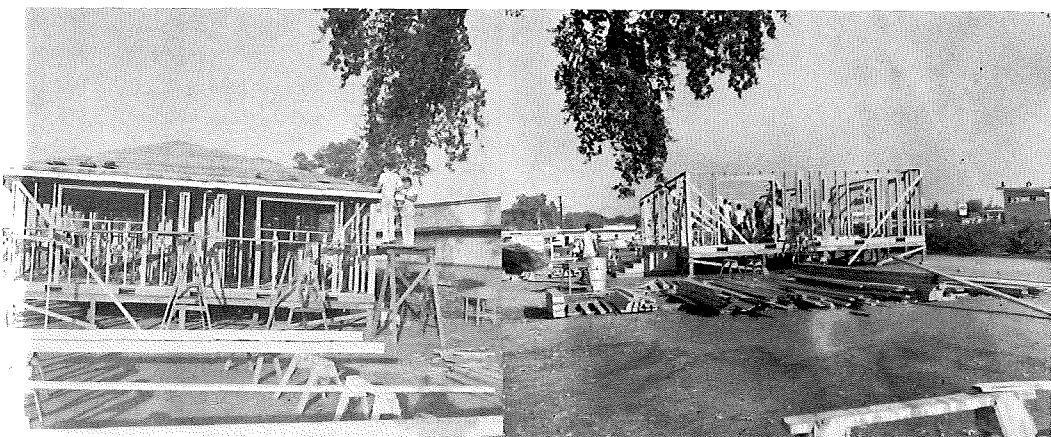
FIRST YEAR

FIRST SEMESTER	UNITS	SECOND SEMESTER	UNITS
Building Trades 55a	3	Building Trades 55b.....	3
Building Trades 56a	6	Building Trades 65b	6
Architecture 51a	2	Architecture 51b	2
Hygiene 1	2	English	3
*Mathematics 50 or Elective...	2	Physical Education	½
Physical Education	½		
	<u>15½</u>		<u>14½</u>

SECOND YEAR

FIRST SEMESTER	UNITS	SECOND SEMESTER	UNITS
Building Trades 56a	3	Building Trades 56b	3
Building Trades 66a	6	Building Trades 66b	6
History 51	3	Political Science 51	3
Business 88	3	Electives	3
Physical Education	½	Physical Education	½
	<u>15½</u>		<u>15½</u>

*Mathematics 50 is required of students who need additional instruction in mathematics as determined by proper standardized tests.



METAL TRADES

The metal shop curriculum comprises a series of shop, mathematics (accounting), and drawing courses which will prepare the student for placement in a machine shop, a related mechanical trade, or will supply him with a practical understanding of our industrialized society.

Emphasis is on blueprint reading, welding, foundry, sheet metal, and machine shop.

Suggested Program

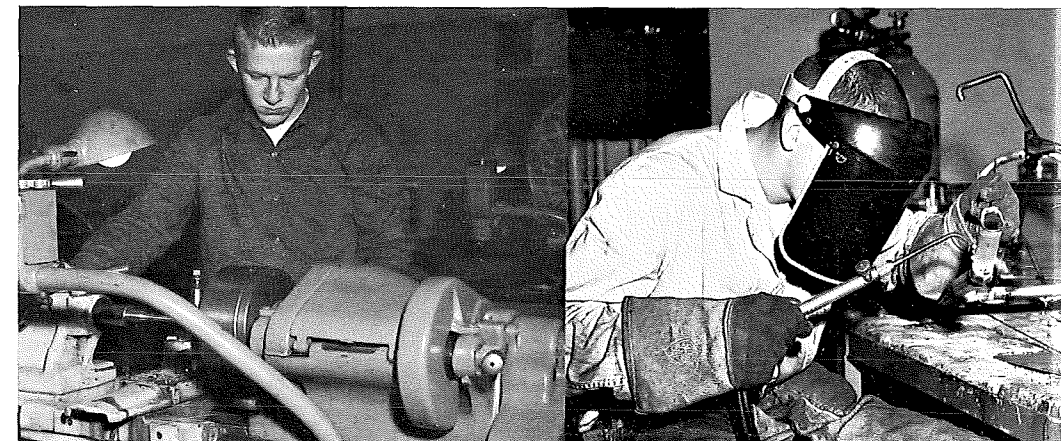
FIRST YEAR

FIRST SEMESTER	UNITS	SECOND SEMESTER	UNITS
Mechanics 64a	3	Mechanics 64b	3
*Engineering 52	2	Engineering 22	2
Mathematics 50	2	Political Science 51	3
English	3	Speech 51a	3
History 51	3	Electives	3
Electives	2	Physical Education	½
Physical Education	½		
	<u>15½</u>		<u>14½</u>

SECOND YEAR

FIRST SEMESTER	UNITS	SECOND SEMESTER	UNITS
Mechanics 65a	3	Mechanics 65c	3
Mechanics 65b	3	Mechanics 65d	3
Mechanics 60a	3	Mechanics 60b	3
Business 88	3	Hygiene 1	2
Electives	4	Electives	3
Physical Education	½	Physical Education	½
	<u>16½</u>		<u>14½</u>

*Students who have had high school mechanical drawing equivalent to Engineering 52 may substitute two additional elective units for this course.



DESCRIPTION OF COURSES

AGRICULTURE

AGRICULTURE 51—FARM MACHINERY (3) Not offered 1960-1961.

A course in the operation, care and repair of farm machinery with demonstrations and laboratory work on tillage planting, and harvesting machinery.

AGRICULTURE 56a-56b—FARM STRUCTURES (3-3) Not offered 1960-1961.

A course in planning, designing, and building the various types of farm buildings necessary to agricultural enterprises of the San Joaquin Valley.

AGRICULTURE 58a-58b-58c—FARM MECHANICS (3-2-3) I, II.

The repair, maintenance, design, and construction of farm machinery and equipment.

AGRICULTURE 60—ELEMENTS OF DAIRYING (4) I.

A survey of the field of dairying. Study of approved practices in the San Joaquin Valley, including selection, feeding, and management.

AGRICULTURE 63—MILK PRODUCTION (3) I.

Factors affecting milk production. Practice in milk production skills. Dairy production problems and methods.

AGRICULTURE 64—DAIRY MANAGEMENT (2) II.

A study of the feeding and management of dairy cattle, record keeping, developing a herd, and raising replacement stock.

AGRICULTURE 65—FEEDS AND FEEDING (4) II.

A study of the constituents of feeds, the digestive system, and the compiling of rations for livestock.

AGRICULTURE 72—SHEEP PRODUCTION (2) II.

A study of market sheep production. Selection of breeding stock, feeders and equipment. Care and management of the flock.

AGRICULTURE 74—FITTING AND SHOWING (1) I.

A course in the methods of fitting and showing cattle, sheep, and hogs for sale and exhibition.

AGRICULTURE 75—BEEF PRODUCTION (3) II.

A study of market beef production. Selection of breeding stock, feeders, and equipment. Care and management of the herd.

AGRICULTURE 76—SWINE PRODUCTION (3) I.

A study of market swine production. Selection of breeding stock, feeders, and equipment. Care and management of the herd.

AGRICULTURE 77—POULTRY BROODING (2) II.

A study of brooding principles and practices, growth of the chick, care and feeding of young stock.

AGRICULTURE 78—EGG PRODUCTION (2) II.

A study of the selection, feeding, sanitation, and management of the laying flock.

AGRICULTURE 81—PLANT PROPAGATION (2) II.

Principles of plant propagation by seed, cutting, layering, grafting, and budding.

AGRICULTURE 82—ECONOMIC ENTOMOLOGY (3) I, E.

General study of western insects; life cycles, economic importance and control.

AGRICULTURE 84—FORAGE CROPS (3) II.

A study of the common forage crops: alfalfa, permanent pastures, silages.

AGRICULTURE 86—HORTICULTURE (3) I.

Walnut, olive, pomegranate, fig, and persimmon production. Planting and establishing an orchard. Cultural practices including pruning, spraying, and harvesting of deciduous fruits.

AGRICULTURE 87—SOILS (4) I.

A study of values and management of different types of soils.

AGRICULTURE 88—CITRUS FRUITS (4) I.

A study of the cultural practices necessary to citrus production.

AGRICULTURE 89—TRUCK CROP PRODUCTION (3) II.

Principles involved in the production, harvesting, and marketing of truck crops grown in the San Joaquin Valley.

AGRICULTURE 90—FARM MANAGEMENT (4) II.

A study of prices, economic trends, budgets, credits, and choice of enterprises.

AGRICULTURE 91—FARM ACCOUNTING (2) II.

A study of farm record keeping and analysis, including inventories, production records, tax records, financial and annual statements.

AGRICULTURE 92—AGRICULTURAL MATHEMATICS (2) II.

Procedures, problems in soils, dairy, horticulture, poultry, and feeds; equations, discounts and interest, area, volumes, and proportions.

AGRICULTURE 99a-99b-99c-99d—SUPERVISED FARM PRACTICE (1-1-1-1) I, II.

Three hours of supervised work experience on the school farm per week.

AGRONOMY 1—INTRODUCTION TO AGRONOMY (3) II.

The principles and practices of field crop production and soil management. A survey of the production and uses of field crops including cotton, sugar beets, cereals.

ANIMAL HUSBANDRY 7—INTRODUCTION TO ANIMAL HUSBANDRY (4) I.

A survey course of the sources of the world's supply of animal products. The origin, characteristics, and adaptation of the more important breeds of livestock and dairy.

ANIMAL HUSBANDRY 8—LIVESTOCK JUDGING AND SELECTION (1) I.

A study of the animal form in relation to its various functions.

POMOLOGY 2—PRINCIPLES OF FRUIT GROWING (3) II.

An introduction to the principles underlying the behavior of fruit trees. Study of climatic influences, varieties, rootstocks, and elementary production practices. Special emphasis on peaches, nectarines, apples, and plums.

VITICULTURE 1—INTRODUCTION TO VITICULTURE (3) I.

A survey of the grape industry, grape varieties and economics, with a study of the cultural practices in production.

ART

ART 5—PUBLIC SCHOOL ART (2) E.

A course in the study of the art expression of the child in relation to his creative growth and development. Art principles are stressed in experimenting with various media adapted to the child's level of development.

Prerequisite: Psychology 1a recommended.

ART 6α-6b—COLOR AND DESIGN (2-2) Yr.

A basic course in art with the primary purpose of familiarizing the student with the elements and principles used in art through the study of historic examples from all countries and periods. Creative imagination and judgment are stimulated through problems involving various media. Experiments with line, form, and color, in two and three dimensions.

ART 7α—FREEHAND DRAWING (2) I.

Freehand and perspective drawing. Use of pencil, pen and ink. Chinese brush, charcoal, water color, and scratch board techniques.

ART 7b—FIGURE DRAWING (2) II.

Drawing from models—human and animal, in various media.

Prerequisite: Art 7α or permission of the instructor.

ART 12α-12b-12c-12d—WATER COLOR PAINTING (1-1-1-1) I, II.

The theory and techniques of water color and gouache painting as applied to still life and landscape.

Prerequisites: Art 6α-6b and 7α or permission of the instructor.

ART 14α-14b-14c-14d—OIL PAINTING (1-1-1-1) I, II.

Experimental painting of still life, landscape, and the human figure. A study of painting procedure, color theory, and techniques. Medium—oil paint.

Prerequisites: Art 6α-6b and 7α or permission of the instructor.

ART 19—ART APPRECIATION (2) I, II, E.

A course designed to develop the student's capacity to enjoy his surroundings by making him conscious of the beauty he sees in his home, his school, his community, and in works of master craftsmen and artists.

ART 23α-23b-23c-23d—DESIGN IN LEATHER (1-1-1-1) I, II, E.

A course in creative leather craft designing, pattern making, carving, finishing, and monogramming.

Prerequisites: None. Art 6α or Art 19 recommended.

ART 24α-24b-24c-24d—DESIGN IN TEXTILES (1-1-1-1) I, II, E.

A study of textiles and creative weaving.

ART 25α-25b-25c-25d—JEWELRY (1-1-1-1) I, II, E.

A basic course in modern jewelry making in creative design and conventional pins, brooches, clasps, rings, earrings. The course is basic for hobby or trade.

ART 26—EXPLORATORY CRAFTS (2) I, II, E.

Stationary, movable, and mechanical toys, pottery, metal tooling, carving, and enameling, to meet needs in kindergarten-primary and elementary schools; tools and their proper use. Field trips may be required.

ART 27α-27b-27c-27d—LAPIDARY (1-1-1-1) I, II, E.

The art of cutting and polishing semiprecious stones.

Not less than one field trip each semester for the study of geological formations and the collection of suitable materials.

ART 29α-29b-29c-29d—GRAPHIC ARTS (1-1-1-1) I, II.

Design and layout, photographic composition, printing, air brush, linoleum and wood prints, scratch board, and drawing. Pen and brush lettering.

ART 31α-31b-31c-31d—MERCHANDISING ART (1-1-1-1) I, II.

Basic techniques in window and counter display with emphasis on hand lettering, design, and color.

BUSINESS

Pre-Business Administration

BUSINESS 1a-1b—PRINCIPLES OF ACCOUNTING (4-4) Yr.

Lecture and discussion 3 hours; laboratory 2 hours.

A college transfer course covering the basic techniques of up-to-date record keeping based upon the double-entry philosophy. Particular attention is devoted to the basic business procedures of gathering and statistically classifying accounting data for statement analysis and interpretation. A comprehensive coverage of assets, liabilities, income and expense accounts is made and a limited consideration is given to specialized phases of accounting.

BUSINESS 10—MODERN BUSINESS (3) I, II.

A business background course presenting a survey of business principles, problems, practices, and procedures of value to all students, whether or not they are majoring in business. For the business major, this course affords assistance in choosing an area of specialization and a background for the more specialized business courses. Formerly Business 90.

BUSINESS 13—CONSUMER PROBLEMS (2) I, II.

A transfer course open to all students. Instructors from several departments and professional specialists discuss such topics as personal finance, insurance, buymanship, home furnishings, clothing, and others selected by the class.

BUSINESS 18—BUSINESS LAW (3) I.

Basic concepts of American Business Law, contracts, agency, negotiable instruments, sales, and courts and legal procedure.

BUSINESS 22—BUSINESS MATHEMATICS (2) II.

A condensed treatment of fractions, decimals, percentages, interest, discount, installment buying, and personal borrowing. An introduction to pay-rolls, wage payment systems, statistical graphs, and merchandising pricing.

Prerequisite: Satisfactory score in the Mathematics test or "C" grade or better in MATHEMATICS 50 or BUSINESS 95.

BUSINESS 40—MONEY AND BANKING (AIB) (3) E.

The functions and use of money in the American economic system, with emphasis on the historical development of banking from the colonial period to modern monetary problems.

BUSINESS 41a—FUNDAMENTALS OF BANKING (AIB) (3) E.

An introductory course in the fundamentals of banking, which covers organization, customer relations, saving program, lending policies, appraisal and home finance, and financial institutions.

BUSINESS 41b—BANKING ADMINISTRATION (AIB) (3) E.

Organizing and directing public relations, office activities, records, and personnel.

BUSINESS 42—NEGOTIABLE INSTRUMENTS (AIB) (3) E.

A study of the principles of negotiable instruments and the use of various types of negotiable paper required in business transactions.

Secretarial and Clerical

BUSINESS 50α-50b—ELEMENTARY SHORTHAND (5-5) Yr.

Business 50α, an elementary course in the theory and technique of Gregg shorthand, is open for credit only to those students who have had no previous instruction in shorthand. Students achieving a speed of 60 words per minute will transfer to Business 51b; those achieving higher speeds to Business 52b.

Typewriting must be taken concurrently with Business 50α unless the student makes a satisfactory score on the typewriting placement test.

BUSINESS 50c-50d—STENOTYPY (3-3) Yr., E.

Instruction in stenotype theory; development of machine dexterity, fluent reading ability, and the ability to take dictation at 60 to 100 words a minute.

BUSINESS 51α-51b—INTERMEDIATE SHORTHAND (5-5) Yr.

Business 51α is a remedial shorthand course for those students who need review in the theory and techniques of Gregg shorthand before continuing in the second-year shorthand class. Speed and accuracy in reading, writing, and transcribing shorthand notes are emphasized. Those students achieving a speed of 80 words per minute will transfer to Business 52b-53b.

Prerequisite: A satisfactory score on the shorthand and typewriting placement tests.

BUSINESS 52α-52b—ADVANCED SHORTHAND DICTATION (5-5) Yr.

A second-year shorthand course where emphasis is placed upon building vocational shorthand vocabularies. The objective of this course is a shorthand dictation speed of 120 words per minute.

Business 53α-53b must be taken concurrently.

Prerequisite: A satisfactory score on the shorthand and typewriting placement tests.

BUSINESS 53α-53b—ADVANCED SHORTHAND TRANSCRIPTION (2-2) Yr.

A required transcription course which must be taken concurrently with Business 52α-52b. Emphasis is placed upon the transcription of the vocational dictation given in the shorthand class and upon improvement of typewriting speed. Office standards are maintained.

Prerequisite: A satisfactory score on the shorthand and typewriting placement tests.

BUSINESS 54α-54b—SHORTHAND REPORTING (3-3) Yr.

Advanced course in shorthand speed building designed to develop dictation speeds above 120 words per minute on tests of lengthy duration.

Prerequisite: Business 52α-52b or its equivalent.

BUSINESS 55—LEGAL SECRETARIES (2) E.

A course providing background information which enables the legal secretary to understand what is being done in the law office and to improve the necessary legal skills.

BUSINESS 56—MEDICAL SECRETARIES (2) E.

A basic coverage of a medical secretary's duties and responsibilities including legal matters, credit and collection procedure, public relations, business management, medical terminology, and vocabulary.

BUSINESS 58α—OFFICE PROCEDURES (3) I.

A required course for secretarial and clerical majors designed to acquaint the student with the functions of the office in modern business and with the duties, traits, and knowledges required of the general office worker. Students will learn to operate duplicating machines (Ditto, Mimeograph, Mimeoscope, and Thermofax) and will become acquainted with the operation of the transcribing machines (Audograph, Comptometer, Dictaphone, Ediphone, and Sound-Scriber).

Prerequisite: Typewriting.

BUSINESS 58b—SECRETARIAL OFFICE PROCEDURES (3) II.

A required course for secretarial majors designed to acquaint the student with the secretary's duties in the office, especially those for which she will be individually responsible. Special emphasis is placed on the status of secretarial work and its relation to office organization; personality development; problems of business etiquette; and methods of obtaining positions and promotions to higher positions.

Prerequisite: Shorthand and Typing.

BUSINESS 59α—PRINCIPLES OF FILING (1) I, II.

A course covering the basic rules and procedures of filing. Individual practice filing equipment allows actual practice in arranging records according to alphabetic, geographic, numeric, and subject methods of filing.

This course is recommended for accounting, secretarial, and clerical majors.

BUSINESS 60α—ELEMENTARY TYPEWRITING (2) I, II, E.

An elementary course covering the fundamentals of typewriting. Stress is placed upon technique, accuracy, and posture. Simple business forms, business letters, and social forms are included in the work.

Business 60α is open only to those students who have had no previous instruction in typewriting.

BUSINESS 60b—INTERMEDIATE TYPEWRITING (2) I, II, E.

A remedial course offering a review of the fundamentals of typewriting for those students who have had previous typewriting instruction but who do not obtain a satisfactory score on the typewriting placement test.

Typical office materials are used for skill building so as to enable the student to reach the required speed level for entrance into Business 61α.

Prerequisite: Business 60α or previous instruction in typewriting.

BUSINESS 61α-61b—ADVANCED TYPEWRITING (2-2) I, II, E.

A second year typewriting course open to all students who make a satisfactory score on the typewriting placement test.

Typical office materials used in the typewriting problems include business letters, legal documents, and other business forms and papers. The emphasis in this course is upon skill-building.

BUSINESS 68α—OFFICE MACHINES (2) I, II, E.

A course of instruction designed to acquaint the student with those machines in most common use in business offices and to build skill in performing the fundamental arithmetic operations upon them. The machines studied are: Comptometer, Burroughs, Marchant, Friden, and Monroe Calculating Machines; Remington-Rand, Clary, and Underwood-Sunstrand Adding Machines; Burroughs and Underwood-Sunstrand Posting Machines.

BUSINESS 68b—OFFICE MACHINES (2) II, E.

An advanced course designed to meet the needs of those students who desire to build professional skill in the use of the calculating and adding machines. This course provides specialized work on practical problems chosen from the various major lines of business, thus enabling the operator to obtain proficiency.

Prerequisite: Business 68a and permission of the instructor.

BUSINESS 69—MACHINE TRANSCRIPTION (2) I, II.

A course of instruction designed to train the student in the operation and care of the Dictaphone, Ediphone, Audograph, Comptometer, and Sound-Scriber dictating and transcribing machines and to develop skill in their use. Specialized instruction is also given in the use of electric typewriters.

Prerequisite: Adequate typewriting skill and permission of the instructor.

Merchandising

BUSINESS 70—SALESMANSHIP (3) I.

A practical vocational salesmanship course designed to show students how to begin a successful career in merchandising through selling. Specific areas of study include professional selling, sales psychology, product analysis, sales techniques, the sales story, and customer service.

This is a required course for all merchandising majors.

BUSINESS 72—RETAILING (3) I.

A course dealing with successful merchandising techniques and methods which will aid the student in acquiring job competency in retail service and in preparing for sales positions leading to management in retail stores. Attention is focused upon the following merchandising problems which confront both the large and small retailer: what to buy, where to buy, location and layout, stock care and arrangements.

This is a required course for all merchandising majors.

BUSINESS 74—MARKETING (3) II.

This course deals with the distribution of commodities from the producer to the retailer. Emphasis is placed upon classification of commodities, function of the various distributors, and channels of distribution. Specific areas covered include advertising, transportation, storage, grading and packaging. This is a required course for all merchandising majors. It is recommended that students take Business 10 and Business 70 (or Business 72) before registering for this course.

BUSINESS 78—CREDIT ADMINISTRATION (AIB) (3) E.

An inservice course for bankers covering consumer credit, loans, installment accounts, collections, and financial statements.

Accounting

BUSINESS 80a-80b—ELEMENTARY ACCOUNTING (4-4) I, II, E.

Lecture and discussion three hours; laboratory two hours.

An elementary course in accounting principles and practice, covering balance sheet accounts, journal entries, control accounts, ledger posting, periodic adjustments, work sheets, financial statements, and closing entries. Single proprietorship, partnership, and corporation accounting systems are included. Retail and departmental practice sets accompany the course.

Prerequisite for 80b: Business 80a or the completion of two years of high school bookkeeping with a satisfactory grade.

BUSINESS 81α-81b—ADVANCED ACCOUNTING (4-4) I, II, E.

Lecture and discussion three hours; laboratory two hours.

An advanced course in the application of specialized phases of accounting theory and practice which continues the work of Business 80α-b.

Prerequisite: Business 80α-b or equivalent.

BUSINESS 86—ANALYSIS OF FINANCIAL STATEMENTS (AIB) (3) E.

Basic techniques for analyzing the balance sheet and the income statement. Attention is given to the application of ratios, percentages, and other comparisons.

BUSINESS 87—ACCOUNTING FOR SECRETARIES (2) II.

A course specifically designed for secretarial majors, its content, organization and emphasis based upon the actual bookkeeping and recording activities performed on the job by the secretary. This course is not open to those students who have had high school bookkeeping, Business 80α, 80b or 88.

BUSINESS 88—RECORD KEEPING FOR SMALL BUSINESS (3) I.

A course covering basic bookkeeping procedure. A practice set is included. It is recommended that Business 95 or Mathematics 50 be taken concurrently with or prior to registering for this course. This course is not open for students who have had high school bookkeeping or who have credit for Business 1α-1b, 80α-80b, 81α-81b, or 87.

BUSINESS 89α-89b—ACCOUNTING FOR BANKERS (AIB) (3-3) E.

A second year course covering balance sheets, income accounts, payrolls, and loans.

Business Background

BUSINESS 91—SMALL BUSINESS MANAGEMENT (3) II.

A basic course in the organization, operation, and management of small businesses. Special attention is given to the problems of the sole proprietorship type of organization. It is recommended that the student complete Business 95 and Business 10 before taking this course.

BUSINESS 93—SURVEY OF BUSINESS LAW (3) II, E.

A study of the meaning and operation of the law under which the student lives, the value of such law to his everyday living, and its aid in the conduct of his home, social, and business affairs.

Recommended for all business majors. Required for nontransfer majors in accounting, excepting those students taking Business 18.

BUSINESS 94—BUSINESS LAW FOR BANKERS (AIB) (3) E.

An AIB course for bankers with emphasis on common contracts, negotiable instruments, partnerships, and corporate business. Other topics covered include ownership of personal and real property and community property.

BUSINESS 95—BUSINESS ARITHMETIC (3) I, II.

A remedial mathematics course in which the student will develop speed and accuracy in the fundamental processes of arithmetic commonly used in making business calculations and will develop the ability to make many ordinary computations mentally rather than by the use of pencil and paper. Students who have received credit for Business 22 may not take this course.

Prerequisite: Satisfactory score on the mathematics placement test.

BUSINESS 96a—ENGLISH FOR BUSINESS (3) I, II.

A course designed to give business students a review of and practice in the basic English skills necessary for office workers. It offers a review of the fundamentals of English grammar, sentence structure, punctuation, and aids in the building of an adequate business vocabulary. Not open to students who have had English 51.

Prerequisite: Satisfactory score on English placement test.

BUSINESS 96b—WRITING FOR BUSINESS (3) I, II.

A course in business communications dealing with the central principles underlying the writing of effective business letters and reports, and providing liberal practice in applying these principles. Study is made of the basic and associated forms of business communications, sales writing, credit, collection, and adjustment letters, and letters of application.

This course is required of all business majors.

Prerequisite: Satisfactory score on English placement test, or a "C" grade in either English 51 or Business 96a.

BUSINESS 97—MANAGING YOUR MONEY (3-3) I, II.

A practical course covering the proper management of personal income and expenditures which is open to both business and nonbusiness majors. To be discussed will be such topics as: commercial and savings accounts, investments, borrowing money; budgets, charge accounts, and installment buying; property, income, estate, inheritance, and gift taxes; life, health, accident, property, and miscellaneous insurance; pension plans and Social Security; trust funds and wills; inflation and business cycles; and problems of owning a home.

BUSINESS 98—PERSONAL EFFICIENCY IN BUSINESS (3) I, II.

A course to acquaint the student with the accepted principles of human relations that will be of practical use for advancing in business, to aid the student in becoming more efficient personally, and in understanding the problems of management in personnel administration.

EDUCATION

EDUCATION 30—INTRODUCTION TO EDUCATION (2) I, II, E.

A brief survey of the fundamental concepts in public education.

Field trips may be required.

Required for elementary teaching credential.

ENGINEERING

ARCHITECTURE 1a-1b—ARCHITECTURAL DRAWING (3-3) Yr., E.

Six hours per week.

The preparation of a complete set of plans for a wood frame house from preliminary sketches. A study of materials of construction, specifications, estimating costs, and the California State Building Code.

Prerequisite: Mechanical Drawing.

ARCHITECTURE 51a-51b—TRADE DRAWING-BUILDING TRADES (2-2) Yr., E.

One lecture and three laboratory hours per week.

A practical course in drawing for the building trades including the fundamentals of mechanical drawing; introduction to architectural drafting and blue print reading; details, symbols, and specifications.

ENGINEERING 1a-1b—SURVEYING (3-3) Yr.

Three hours lecture and three hours field work per week.

Fundamental principles and practice in methods of land and route surveying.

Prerequisites: Trigonometry and Mechanical Drawing. These may be taken concurrently.

ENGINEERING 8—MATERIALS OF ENGINEERING CONSTRUCTION (3) I.

Two hours lecture per week, two hours laboratory per week.

Structural properties and use of various materials.

Recommended: Sophomore engineering standing.

ENGINEERING 22—ENGINEERING DRAWING (3) I, II, E.

Two lecture and four laboratory hours per week.

Geometric construction; freehand pictorials; theory of orthogonal projection; simple auxiliaries; sectioning; fasteners; dimensioning; simple working drawing.

Prerequisite: Engineering 52 or one year of high school mechanical drawing.

ENGINEERING 23—DESCRIPTIVE GEOMETRY (3) I, II.

Six hours per week.

The fundamental principles of descriptive geometry and their application to the solution of three-dimensional problems arising in the various branches of engineering.

Prerequisite: Engineering 22 and plane geometry. Engineering 22 may be taken concurrently.

ENGINEERING 24—ADVANCED ENGINEERING DRAWING (3) I, II.

Two lecture and four laboratory hours per week.

Cams and gears, detail and assembly drawings of machine parts; freehand sketches; structural detailing; piping layouts; application of American Standards in drafting room practice; tolerances; classes of fit and machining specifications.

Prerequisites: Engineering 22 and 23, or Engineering 23.

ENGINEERING 26—MACHINE DESIGN (3) I, II.

Two lecture and four laboratory hours per week.

Design of original machines or parts which can subsequently be made in the college shop. Production drafting methods are followed as closely as possible.

Prerequisites: Engineering 22 and 24.

ENGINEERING 35—STATICS (3) II.

Three lectures per week.

Force systems and equilibrium conditions as applied to engineering problems.

Prerequisites: Physics 4a; Mathematics 14a.

ENGINEERING 50a-50b—BLUE PRINT READING (2-2) E.

A survey course designed to convey an understanding of basic engineering symbols and to interpret blue prints in terms of the common objects and devices related to the engineering field.

ENGINEERING 52—MECHANICAL DRAWING (2) I, II, E.

One lecture and three laboratory hours per week.

A rapid comprehensive coverage of the fundamentals of mechanical drawing and modern drafting practice; lettering; geometric drawings; orthographic projection, pictorial representation, and blueprinting.

ENGINEERING 53—TRADE DRAWING—METAL TRADES (2) I, II, E.

Not offered 1960-1961.

One lecture and five laboratory hours per week.

A practical course in drawing for the metal trades, blueprint reading, sheet metal development and detail, and assembly drawings of machined and fabricated parts.

Prerequisite: Engineering 52 or one year of high school mechanical drawing.

ENGINEERING 60a-60b—ELEMENTARY PROBLEMS IN ENGINEERING (2-2) E.

A preview of the engineering field with problems in logarithms, slide rule, dimensional analysis, trigonometry, mechanics, uniform motion, friction, work, power, energy, and forces.

ENGLISH

Composition and Literature

ENGLISH 1a—FIRST-YEAR READING AND COMPOSITION (3) I, II, E.

This course is designed to provide training in intelligent interpretation and in correct and effective expression, oral and written, through analysis and discussion of expository types of literature, especially the essay and biography, and the writing of themes. Organization of material, clarity and directness of style, and idiomatic correctness are stressed. Experience in the preparation of a formal research paper is included.

Prerequisite: An acceptable score on the English Placement Test or a grade of "C" or better in English 51 or Business 96a.

ENGLISH 1b—FIRST-YEAR READING, COMPOSITION, AND LITERATURE (3) I, II, E.

The purpose of this course is to improve the student's powers of analysis and expression, and to cultivate his appreciation of literary values through a critical study of selected plays, poems, short stories and a novel. Oral discussion and written composition are continued.

Prerequisite: English 1a.

ENGLISH 4a-4b—MASTERPIECES OF LITERATURE—THE ENGLISH NOVEL (3-3) Yr.

The course covers the history and development of the English novel from the eighteenth to the twentieth century. Emphasis is placed on the social as well as the aesthetic aspects of the works. Seven representative novels are read and discussed each semester.

Prerequisite: English 1a or permission of the instructor.

ENGLISH 5a-5b—HISTORY OF ENGLISH LITERATURE (3-3) Yr.

This period covers the history of English literature from the Anglo-Saxon period to the present, emphasizing the study of social and historical backgrounds and literary movements, with illustrative readings from literary masterpieces, lectures, and discussions.

Prerequisite: English 1a-1b.

ENGLISH 10α-10b—ELEMENTARY JOURNALISM (3-3) I, II.

A course which puts emphasis on writing news stories but which also deals with head writing, copy writing, proof reading, page makeup, and ethics in journalism.

Prerequisite: Satisfactory score in English placement test or a grade of "C" or better in English 51, or permission of the instructor.

ENGLISH 11α-11b-11c-11d—STUDENT PUBLICATIONS (1-1-1-1) I, II.

Yearbook and other student publications, design, layout, composition, dummy, copy writing, advertising, financing, coordinating art, and photography work.

Prerequisite: High school or college experience, or approval of instructor.

ENGLISH 12α-12b—JOURNALISM WORKSHOP (2-2) I, II.

A laboratory course in practical journalism. Includes special publicity assignments and advanced work in news writing, copy editing, and page makeup. Students serve in key positions on campus publications.

Prerequisites: English 10α-10b, or permission of the instructor.

ENGLISH 14—CREATIVE WRITING (2) I, E.

The purpose of this course is to provide opportunity for experience in writing short stories, feature articles, verse, and plays. Workshop discussion of the students' own productions forms a large part of the class activity. Members of the class are encouraged to specialize in the type of writing that interests them most.

Prerequisite: English 1α or special permission of the instructor.

ENGLISH 15—CREATIVE WRITING (2) II, E.

This course is a continuation of English 14, offered to all students interested in creative writing. Professional standards of writing receive special emphasis.

Prerequisite: English 1α or special permission of the instructor.

ENGLISH 50—PRACTICAL ENGLISH (3) I, II.

This course is a prerequisite for English 51 for those students who fail to attain the necessary score for placement in English 51. It may be used as a terminal course which partially fulfills the English requirement for those who do not plan to transfer.

ENGLISH 51—GRAMMAR AND COMPOSITION (3) I, II, E.

This course includes drills in mechanics, diction, grammar, punctuation, and spelling, and practice in writing sentences, paragraphs, and themes. It is intended primarily for those students who fall below the median score in the English Placement Test. Some colleges allow partial transfer credit for the course; however, no credit is granted by the University of California.

Prerequisite: Score of 40 or above on English Placement Test, or permission of instructor.

ENGLISH 52—ESSENTIALS IN READING AND WRITING (3) I, II.

This course is planned to assist the student in increasing his ability to read rapidly and understandingly, to write clearly, concisely, and correctly.

Prerequisite: English 51.

ENGLISH 54—READING BETTER AND FASTER (3) I, II.

This course is intended for those students who wish to improve their comprehension and speed in reading.

Prerequisite: None.

ENGLISH 64—SPEED READING (2) E.

A course designed to meet the needs of business and professional people who want to increase their reading ability, and particularly their speed of reading.

SPEECH ARTS

SPEECH 1a-1b—FUNDAMENTALS OF PUBLIC SPEAKING (3-3) I, II, E.

This course is concerned primarily with training in meeting practical speech situations. The work of the first semester concentrates on such fundamentals as techniques of finding and organizing speech materials, effective use of the voice in communication, and good platform manners. In the second semester, the student receives training in the preparation and delivery of various types of speeches.

Prerequisite: An acceptable score on the English placement test or a grade of "C" or better in English 51 or Business 96a.

SPEECH 33a-33b—PLAY PRODUCTION (2-2) Yr.

The work of the course comprises a study of the technique of acting and directing, and practical experience in the production of plays. Attendance at outside rehearsals is required for credit.

Prerequisite: A grade of "C" or better in the English Placement Test, or permission of the instructor.

SPEECH 34a-34b—ADVANCED PLAY PRODUCTION (2-2) Yr.

A course designed for advanced drama students. Actual experience in acting, directing, and producing short and long plays for public presentation in the College Experimental Theatre and Montgomery Auditorium. Attendance at outside rehearsals is required for credit.

Prerequisite: Speech 33a-33b or permission of the instructor.

SPEECH 35a-35b—PLAY PRODUCTION FOR ADULTS (3-3) E.

A comprehensive course in make up, costume, technique of acting, stage production and design. Each semester a one act play is produced by the class.

SPEECH 40—RADIO-TV SPEECH (2) I, II.

This is a laboratory course in microphone and television technique, in which voice control, diction, radio, and television announcing are studied. It is intended especially for speech majors and for students who wish experience in radio and television announcing.

SPEECH 51a-51b—PRACTICAL SPEECH (3-3) Yr., E.

This course is arranged for those students who intend to go directly into homemaking or business upon the completion of their junior college work. Stress is placed upon the development of poise and self-confidence, right use of the voice, and parliamentary procedure for meetings of clubs.

Prerequisite: For Speech 51a, None. For Speech 51b, Speech 51a.

SPEECH 61a-61b-61c-61d—STAGE CRAFT (1-1-1-1) I, II.

Technical problems in lighting and stage production. Practical experience in design, construction, and staging of college dramatic and musical productions. This course does not fulfill graduation requirements for English or speech, but it is accepted as elective credit.

FOREIGN LANGUAGES

FRENCH 1a—ELEMENTARY FRENCH (4) I. E.

Basic oral and aural French, pronunciation, reading, writing and inductive grammar; French life and culture.

Corresponds to first two years of high school French.

FRENCH 1b—(4) II, E.

Continuation of French 1a.

Prerequisite: French 1a or two years of high school French.

FRENCH 1c—INTERMEDIATE FRENCH (4) I.

Reading and discussion of French novels, plays, and short stories. Basic grammar review.

Prerequisite: French 1a-1b or three years of high school French.

FRENCH 1d—(4) II.

Continuation of French 1c.

Prerequisite: French 1c or four years of high school French.

FRENCH 51a-51b—(2-2) E.

First year terminal conversational French.

FRENCH 52a-52b—(2-2) E.

Second year terminal conversational French.

GERMAN 1a—ELEMENTARY GERMAN (4) I.

Pronunciation, essentials of grammar, and progressive reading.

Corresponds to first two years of high school German.

GERMAN 1b—(4) II.

Continuation of German 1a.

Prerequisite: German 1a or two years of high school German.

GERMAN 1c—INTERMEDIATE GERMAN (4) I.

Grammar review, written composition, extensive reading, and translation.

Prerequisite: German 1b or three years of high school German.

GERMAN 1d—(4) II.

Continuation of German 1c.

Prerequisite: German 1c or four years of high school German.

RUSSIAN 51a-51b—(2-2) E.

First year terminal conversational Russian.

RUSSIAN 52a-52b—(2-2) E.

Second year terminal conversational Russian.

SPANISH 1a—ELEMENTARY SPANISH (4) I, E.

Basic oral and aural Spanish; pronunciation, reading, writing and inductive grammar; Spanish life and culture.

SPANISH 1b—(4) II, E.

Continuation of Spanish 1a. Spanish life and culture.

Prerequisite: Spanish 1a or two years of high school Spanish.

SPANISH 1c—INTERMEDIATE SPANISH (4) I, E.

Reading and discussion of Spanish novels, plays and short stories. Basic grammar review.

Prerequisite: Spanish 1a-1b or three years of high school Spanish.

SPANISH 1d—(4) II, E.

Continuation of Spanish 1c.

Prerequisite: Spanish 1c or four years of high school Spanish.

SPANISH 51a-51b—(2-2) E.

First year terminal conversational Spanish.

SPANISH 52a-52b—(2-2) E.

Second year terminal conversational Spanish.

SPANISH 53a-53b—(2-2) E.

Advanced Spanish conversation.

Prerequisite: Two years of college Spanish.

HOME ECONOMICS

HOME ECONOMICS 10a—FOODS (3) I.

A study of the relationship between food composition, nutrition, and health; basic principles of food preparation to conserve nutritive values; development of the ability to plan, prepare, and serve meals which are attractive, adequate for health, and within different income levels.

Prerequisite: High school chemistry or permission of instructor.

HOME ECONOMICS 10b—FOODS (3) II.

A continuation of 10a, with the application of principles to more complicated techniques of food selection and preparation. This includes buffet, outdoor, regional and foreign meals.

HOME ECONOMICS 11—ELECTRONIC MEAL PREPARATION (1) II.

Not offered 1960-1961.

(Techniques in Use of Electronic Ranges)

For home economic majors to acquaint the student with the use of the electronic range. Meal planning and preparation to meet the demands of the electronic media. Demonstrations—with emphasis on complete meal preparation, also experimental recipe development.

HOME ECONOMICS 12a—CLOTHING (3) I.

Fundamentals of clothing selection as applied to the individual for suitability in color, design, and wardrobe need. Selection, use, and alteration of commercial patterns. Fundamental techniques of clothing construction. Preferably preceded by Home Economics 24 and Home Economics 22.

HOME ECONOMICS 12b—FLAT PATTERN DRAFTING (3) II.

Drafting basic patterns from individual measurements; designing costumes, adjusting basic pattern to individual design; developing skill in clothing construction.

Prerequisite: Home Economics 12a.

HOME ECONOMICS 13—CONSUMER'S PROBLEMS (2) I, II.

Management of personal income so as to secure the greatest measure of satisfaction and highest possible standard of living. Students are acquainted with such topics as: personal finance, insurance, family clothing, home furnishings and equipment, foods, agencies for consumer aid, protection and information. Taught with instructors from other departments and professional specialist's assistance to instructors.

HOME ECONOMICS 15—SURVEY OF HOME ECONOMICS (2) I.

Introduction to the opportunities and requirements in various professional fields for the trained home economist. Lectures by the staff and specialists in the field. Required of majors.

HOME ECONOMICS 16—HOUSEHOLD EQUIPMENT (2) II.

Not offered 1960-1961.

Selection of household appliances and equipment; knowledge of construction, materials, and functional design as related to economy of time, energy, and money; adequate wiring installation; operating and maintenance costs and techniques; safety features in the home; cleaning agents; kitchen planning, arrangement of work, preparation and serving units. Lecture and laboratory, four hours. Fulfills requirement for major, open to all interested students.

HOME ECONOMICS 22—TEXTILES (2) I.

A study of natural and synthetic textile fibres and fabrics. Includes fundamental weaves, designs and finishes, production and manufacture of textiles. Also testing fabrics to determine serviceability and quality for clothing and household uses.

HOME ECONOMICS 24—CLOTHING SELECTION (2) I.

This course is concerned with the maximum personal development of the individual. It includes modeling techniques, body conditioning, hairstyle and hat selection, use of beauty products, style selection in terms of build and personality, personality typing, and wardrobe planning. Open to all majors. Should precede construction classes.

HOME ECONOMICS 26—MARRIAGE AND FAMILY LIFE (2) I, II.

This course is designed to give the student greater insight into family living. The course includes analysis of the family institution in society; emotional maturity for marriage; mate selection factors; emotional, spiritual, sexual, financial factors in marital adjustment; parenthood.

HOME ECONOMICS 50a—CAREER FOODS (2) I.

An introduction to planning, marketing, and preparation of meals for students who are majors in other fields but who are aware of their need for some food and table service training. Demonstrations with emphasis on quick meals easily prepared and served attractively, participation in menu planning, buying, timing, preparation and serving of quick economical meals.

HOME ECONOMICS 50b—CAREER FOODS (2) II.

A continuation of 50a with the application of a career person's time and facilities for guest meals, namely brunch, buffet, and outdoor meals. Preparation and variation of quick mixes, frozen foods, care and handling and pressure cooking short-cuts.

HOME ECONOMICS 51a—CAREER CLOTHING (2) I.

Designed for students of any major. Includes fundamentals of clothing selection as applied to the individual for suitability in color, design, and wardrobe need. Selection and use, and alteration of commercial patterns. Fundamental techniques in cotton and wool construction. Preferably preceded or taken concurrently with Home Economics 24.

HOME ECONOMICS 51b—CAREER CLOTHING (2) II.

A continuation of 51a with advanced construction techniques. Some original design possible, some tailoring techniques, and the option of making a dress form.

Prerequisite: Home Economics 51a.

HOME ECONOMICS 51c—ADVANCED CLOTHING CONSTRUCTION AND TAILORING TECHNIQUES (2) II.

A continuation of Home Economics 51b on advanced project basis. Original designing, tailoring, or drafting.

Prerequisite: Home Economics 51a and 51b.

HOME ECONOMICS 52—PERSONAL COSTUME DESIGN (2) II.

Construction of dress form, draping to the individual figure, and flat pattern drafting. Prerequisite: Clothing 10a-10b or 50a-50b or consent of instructor.

HOME ECONOMICS 57—CHILD DEVELOPMENT (3) II.

Study of the needs of the infant and child in relation to the family group, including the preparation for the arrival of children, prenatal development, infancy and childhood. Emphasis on home, parent, child relations. No prerequisite. Lecture, discussion, and guided observation.

HOME ECONOMICS 59—HOME FURNISHINGS (2) I.

Not offered 1960-1961.

Textiles: Selection, use and care. Household equipment: Selection, use and care.

Prerequisite: None.

HOME ECONOMICS 70a-70b-70c-70d — PRACTICAL NURSING REFRESHER COURSE (3-3-3-3) E.

A comprehensive course designed to enable practical nurses to advance in civil service. Lecture and demonstration of hospital and sick room procedure. Emphasis on body mechanics, nutrition, care of aged, paralyzed, convalescent, medication, and nursing ethics.

NUTRITION 8—NUTRITION FOR PHYSICAL FITNESS (2) I, II.

A study of human food needs with relation to diet planning both at home and in hospitals; for normal, obese, diabetic, low-sodium, post operative, pregnancy, and lactation requirements. Role of the elementary, physical education and home economics teachers, and parents in fostering sound nutritional habits.

HYGIENE

HYGIENE 1—MEN (2) I, II, E.

A general course including the facts necessary for intelligent maintenance of physical and mental health and a scientific discussion of the effects of narcotics and alcohol. Interpretation of life processes; a study of the principal body systems and of the hygiene and first aid associated with each; includes fire prevention. Fulfills state requirements.

HYGIENE 2—WOMEN (2) I, II, E.

An introduction to hygiene with emphasis on the special health problems and health interests of college students; means of promoting health, including a scientific discussion of the effects of narcotics and alcohol; relationship of mental health to physical health; includes fire prevention. Fulfills state requirements.

HYGIENE 3—RED CROSS FIRST AID (1) I, II, E.

The American Red Cross Standard First Aid Course; includes fire prevention.

INDUSTRIAL ARTS

Metal Trades

MECHANICS 60a-60b—WELDING (3-3) Yr., E.

Five hours per week.

Study of welding materials, supplies, tools, and equipment. Welding procedures using arc welding and acetylene welding and cutting equipment.

MECHANICS 61—WELDING (2) I, II, E.

One hour lecture, three hour laboratory per week.

Arc and gas welding for automobile students.

MECHANICS 64a-64b—ELEMENTARY MECHANICS (3-3) Yr., E.

Five hours per week.

An introductory course covering the study of materials, processes, tools, and machines in the general metal field. Project construction on layout, benchwork, welding, foundry, heat treating, sheet metal, and machine shop.

MECHANICS 65a-65b-65c-65d—MACHINE SHOP (3-3-3-3) I, II, Yr.

Five hours per week.

Study of materials, supplies, tools and equipment. Project construction involving layout, setup, and operation of jobs on lathes, drill presses, grinders, milling machines, and shapers.

Prerequisite: Mechanics 64a-64b.

LAW ENFORCEMENT

LAW ENFORCEMENT 50a-50b—TRAFFIC REGULATIONS AND CONTROL (2-2) Yr., E.

50a covers traffic accident investigation and its relation to accident prevention. 50b is a study of the California Vehicle related laws with reference to the traffic problem.

LAW ENFORCEMENT 51—CRIMINAL LAW (2) I, E.

Elements of criminal law; the California Penal Code; specific offenses; elements of crime.

LAW ENFORCEMENT 52—LAW OF ARREST (2) II, E.

Rights and duties of peace officers, citizens and prisoners; warrants; techniques of arrest, searches, and seizures.

LAW ENFORCEMENT 53—CRIMINAL INVESTIGATION (3) II, E.

Three hours lecture.

Principles and techniques of criminal investigation; scientific crime detection methods; laboratory practice in techniques of investigation.

Prerequisite: Law Enforcement 51, 54, and 55.

LAW ENFORCEMENT 54—RULES OF EVIDENCE (2) II, E.

Obtaining and presenting evidence in court; elemental rules of evidence; weight and value of various types of evidence.

LAW ENFORCEMENT 55—POLICE RECORDS AND REPORTS (3) I.

A study of the structure and functions of the police record system from the administration aspect; complaint records; criminal files; cross index techniques; modus operandi; report writing; description of persons and property; collateral police records; police statistical method and prediction of significant trends.

Prerequisite: Political Science 10a-10b.

LAW ENFORCEMENT 56—CRIMINAL IDENTIFICATION (3) I, E.

Theory and practice in the study of fingerprints, description of persons, and modus operandi in its application to individual characteristics.

LAW ENFORCEMENT 57—CRIME PREVENTION (3) II, E.

Nature and extent of juvenile delinquency; the problem of cause, methods of treatment and prevention; police problems and methods of dealing with juvenile delinquency.

Prerequisite: Sophomore standing. Recommended: sociology or psychology; may be taken concurrently.

LAW ENFORCEMENT 58a-58b—GUNNERY (1-1) I, II.

A basic course in firearms training emphasizing the standard police sidearm including safety, range technique, and range firing. A number of sessions on field problems and range practice will be held on Saturdays during each semester.

LAW ENFORCEMENT 59—POLICE PROCEDURES (3) I, E.

Basic police procedures in beat patrol and observation, handling complaints, and the mechanics of arrest.

Prerequisites: Law Enforcement 51, 54, and sophomore standing.

LAW ENFORCEMENT 60a-60b-60c-60d-60e—POLICE TRAINING FOR PEACE OFFICERS (1-5) E.

Includes the study of laws of arrest, evidence, penal code, report writing, court appearance, field note-taking, investigation, beat patrol, interrogation, and public and race relations. The course is geared to meet the needs of peace officers and law enforcement agencies of this area.

LIBRARY SCIENCE

LIBRARY SCIENCE 50a-50b-50c-50d—(1-1-1-1) I, II

A course of training in the use of books and libraries for students who wish to learn how to use libraries with greater efficiency, and for those who are interested in librarianship as a vocation. Two or four practice periods per week.

MATHEMATICS

MATHEMATICS A—ELEMENTARY ALGEBRA (3) I, II, E.

An intensive one-semester course in elementary algebra covering fundamental operations, linear equations, factoring, graphing, exponents, and radicals. This course is given for students who are deficient in high school algebra. It may not be repeated for credit if previously passed in high school or college.

MATHEMATICS B—PLANE GEOMETRY (3) I, II, E.

An intensive one-semester course in the elements of plane geometry covering rectilinear figures, the circle, similar figures, ratio and proportion, and areas of plane figures. This course is given for students who are deficient in high school geometry. It may not be repeated for credit if previously passed in high school or college.

MATHEMATICS C—TRIGONOMETRY (3) I, II, E.

Trigonometry functions of any angles; logarithms; solutions of triangles; trigonometric equations. This course may not be repeated for credit if previously passed in high school or college.

Prerequisites: One and one-half years of high school algebra and plane geometry.

MATHEMATICS D—INTERMEDIATE ALGEBRA (3) I, II, E.

Rapid review of elementary algebra; exponents; radicals; progressions; quadratic equations; systems of equations; logarithms; the binomial theorem. This course may not be repeated for credit if previously passed in high school or college.

Prerequisite: One year of high school algebra. This course is not open to students who have received credit for two years of high school algebra.

MATHEMATICS G—SOLID GEOMETRY (2). Not offered, 1960-1961.

A study of points and lines in space and the properties of regular solids.

Prerequisite: Plane geometry.

MATHEMATICS 1—COLLEGE ALGEBRA (3) I, II.

Mathematical induction; determinants; inequalities; permutations and combinations probability; partial fractions; higher equations; theory of equations.

Prerequisite: One and one-half years of algebra in high school or Mathematics D.

MATHEMATICS 2—MATHEMATICS OF FINANCE (3) II.

A study of graphs, logarithms, statistics, interest, annuities, life insurance, amortization, sinking funds, valuation of bonds, and depreciation.

Prerequisite: Two years of high school algebra or Mathematics D.

MATHEMATICS 3 α —ANALYTIC GEOMETRY AND CALCULUS (3) I, E.

The plotting of curves, loci, differentiation and integration of algebraic functions, and application.

Prerequisite: Two years of high school algebra or Mathematics D; plane geometry; plane trigonometry. Recommended: Mathematics 1 taken concurrently.

MATHEMATICS 3 β —ANALYTIC GEOMETRY AND CALCULUS (3) II.

The geometry of the conic sections, differentiation and integration of trigonometric and transcendental functions, parametric equations, and applications.

Prerequisite: Mathematics 3 α .

MATHEMATICS 10—MATHEMATICS FOR ELEMENTARY TEACHERS

(3) I, II, E.

Work and tests covering the operations of arithmetic; fundamental concepts; unit plan of organization of subject matter; analysis of skills and difficulties.

Prerequisites: Mathematics A and Mathematics B.

MATHEMATICS 14 α —CALCULUS AND ADVANCED CALCULUS (5) I.

Polar coordinates, space coordinates, partial differentiations, conjugate functions, hyperbolic functions, vector algebra, Fourier series, complex variables.

Prerequisites: Mathematics 3 α -3 β .

Formerly Mathematics 4 α , 19 α .

MATHEMATICS 14b—CALCULUS AND ADVANCED CALCULUS (5) II.

Multiple intergrade, applications series, and differential equations.

Prerequisite: Mathematics 14a.

Formerly Mathematics 4b, 19b.

MATHEMATICS 20—SLIDE RULE (2) I, II, E.

Adjustment, operation, and the theory of the slide rule; computation rules, graphical methods, interpolation, logarithms.

Prerequisite: Mathematics C; may be taken concurrently.

MATHEMATICS 50—REVIEW OF ARITHMETIC FUNDAMENTALS (2) I, II, E.

Drill in the fundamentals with emphasis on fractions, decimals, and percentages.

MILITARY

MILITARY 1—MILITARY SCIENCE (4)

Satisfactory completion of at least one year of training in the military service of the United States.

MILITARY 2a-2b-2c-2d—MILITARY LEADERSHIP (1-1-1-1) I, II.

Three hours per week. Laboratory.

Prerequisite: Approval of instructor.

MILITARY 3a-3b-3c-3d—AIR FORCE RESERVE TRAINING (2-2-2-2) E.

Elective course for Air Force Veterans. Supervision and leadership.

MUSIC

MUSIC 1a-1b—STRING INSTRUMENTS; CLASS INSTRUCTION (1-1) I, II.

Elementary instruction in violin, viola, cello, bass viol; tone production, bowing, technique, care of instruments.

MUSIC 2a-2b-2c-2d—DANCE BAND (1-1-1-1) I, II.

A terminal course which includes the organization, training procedures, arranging, vocals, and other phases of dance band work. Public performance. Designed for the student desiring to enter the field of professional dance music, radio, or theatre orchestra work.

Prerequisite: Permission of the instructor.

MUSIC 3a-3b—WOODWIND INSTRUMENTS; CLASS INSTRUCTION (1-1) Yr.

3a—Elementary instruction; correct tone production; technique and care of instruments; emphasis on clarinet.

3b—Continuation of 3a with emphasis on flute, oboe, saxophone, and bassoon.

MUSIC 4a-4b—MUSICIANSHIP (1-1) Yr.

Simple rhythmic notation; scales, intervals, triads; melodies in major mode, emphasizing the tendency of tones individually and their significance in groups; music reading of material containing simple tonal relations and simple rhythmic designs; phrasing and general principles of music interpretation. Should be taken concurrently with Music 12a-12b.

MUSIC 5a-5b—ADVANCED MUSICIANSHIP (1-1) Yr.

Continuation of Music 4a-4b. Diatonic and chromatic modulation, altered chords.

Prerequisites: Music 4a-4b. Should be taken concurrently with Music 14a-14b.

MUSIC 6α-6b—BRASS AND PERCUSSION INSTRUMENTS: CLASS
INSTRUCTION (1-1) Yr.

6α—Elementary instruction; correct tone production, technique, and care of instruments.

6b—Continuation of 6α.

MUSIC 7α-7b-7c-7d—ADVANCED ORCHESTRA (1-1-1-1) I, II, E.

A course designed for students and adults who are proficient in playing their instruments. The orchestra prepares music for accompaniment for oratorio and light opera. Participation in public performances expected.

Two hours classwork.

Prerequisite: Permission of the instructor.

MUSIC 8α-8b-8c-8d-8e-8f—COLLEGE CHOIR (1-1-1-1-1) I, II.

A study of the best choral literature for mixed voices, with emphasis on tone production, precision, and sincerity of ensemble interpretation.

Choir students are asked to participate in a limited number of out of school performances.

Prerequisite: Permission of the instructor.

MUSIC 9—MUSIC FOR ELEMENTARY TEACHERS (3) I, II, E.

Introduction to basic music skills. Fundamentals of music, piano, keyboard, writing and reading music, singing unison and part songs, playing simple melodic and rhythmic instruments, conducting.

MUSIC 10—APPRECIATION OF MUSICAL LITERATURE (2) I, II.

Designed to aid the average student in developing an understanding and enjoyment of the music of the great composers. No previous musical training required. Special emphasis given to the problems of the musically untrained listener.

MUSIC 12α-12b—BEGINNING THEORY (3-3) Yr.

This course includes the fundamentals of music notation and the use of chords in harmonizing melodies and basses in both major and minor keys. Simple ear-training and key-board harmony included. Should be taken concurrently with Music 4α-4b.

MUSIC 14α-14b—ADVANCED THEORY (3-3) Yr.

Continuation of Music 12α-12b. Diatonic and chromatic modulation, altered chords.

Prerequisites: Music 12α-12b.

Should be taken concurrently with Music 5α-5b.

MUSIC 16α-16b—MUSIC HISTORY (2-2) Yr.

16α—The history of music from primitive times to the eighteenth century.

16b—A continued study to the present.

No prerequisite for Music 16b.

MUSIC 17α-17b—ORCHESTRATION (2-2) Yr.

17α—Range, technique, timbre, transposition of band and orchestral instruments; exercises in orchestration for individual instrumental choirs.

Prerequisites: Music 4α-4b, 12α-12b.

17b—Scoring for small instrumental combinations and for full band and orchestra.

Prerequisite: Music 17α.

MUSIC 18α-18b—MARCHING BAND (2-2) I.

Rehearsal and participation in performances for athletic and other college functions. Some extra-class time is required for public appearances of the group.

MUSIC 19α-19b—CONCERT BAND (1-1) II.

The study and performance of standard band music, with special attention to interpretation, tone, technique, and general effect. Planned for those interested in improving their musicianship.

MUSIC 20—APPRECIATION OF THE OPERA (2) I, II.

Complete opera recordings of selected composers.

MUSIC 21—BEGINNING PIANO (1) I, II.

Prerequisite: None.

MUSIC 22α-22b-22c-22d—INTERMEDIATE PIANO (1-1-1-1) I, II.

Prerequisite: Music 21 or consent of instructor.

MUSIC 30α-30b-30c-30d—ELEMENTARY VOICE (1-1-1-1) I, II.

A class in the fundamentals of good singing in the vocal field. Individual performance before the class is required.

Prerequisite: Permission of the instructor.

MUSIC 50α-50b-50c-50d—ORCHESTRA FOR ADULTS (1-1-1-1) E.

Music for accompaniment for oratorio and light opera.

MUSIC 51α-51b-51c-51d—PERFORMANCE MUSIC (1-1-1-1) I, II, E.

Performances in recitals, musicals, bands, and orchestras.

NURSING

NURSING 50-51—VOCATIONAL NURSING (18-27) Yr.

Theory and practice of nursing, vocational relationships, medical and surgical principles, maternal and child care, geriatrics, and clinical experience. Course requires one calendar year. Upon satisfactory completion a certificate is awarded which enables the student to take the State Board examination to obtain licensure in California as Vocational Nurse.

PHILOSOPHY

PHILOSOPHY 6α-6b—INTRODUCTION TO PHILOSOPHY (3-3) Yr.

This course in philosophy is presented by types or typical world views. It attacks the fundamental problems by acquainting the student with representative thinkers and major philosophical systems, and aims to make the subject as practical as possible.

Prerequisite: None.

PHILOSOPHY 10α-10b—HISTORY OF PHILOSOPHY (3-3) E.

This is a course in the history of philosophy, chronologically considered, treating of the major philosophers from the pre-Socratic to the Scientific Era.

Prerequisite: None.

PHOTOGRAPHY

PHOTOGRAPHY 1a—BASIC PHOTOGRAPHY (3) I, II.

Two hours lecture and three hours laboratory a week.

Theory and practice of photography.

Basic knowledge and skill in the use of photographic chemicals and equipment while photographing a variety of technical and artistic subjects.

PHOTOGRAPHY 2a-2b-2c—ADVANCED PHOTOGRAPHY LABORATORY (1-1-1) I, II.

A three-hour laboratory course designed to acquaint students with some of the more advanced techniques of the photographic process.

Prerequisite: Photography 1a.

PHOTOGRAPHY 51—ELEMENTARY PHOTOGRAPHY (1) E.

A lecture course designed to give knowledge of the fundamentals of the photographic process.

PHOTOGRAPHY 52—ELEMENTARY PHOTOGRAPHY (1) I, II, E.

A two-hour laboratory course to acquaint the student with the fundamental techniques of the photographic process.

Prerequisite: To be taken concurrently with Photography 51, or with the instructor's permission.

PHYSICAL EDUCATION

PHYSICAL EDUCATION—GENERAL ACTIVITY (½ each) I, II.

Physical Education 1a-1b—Archery.

Physical Education 2a-2b—Badminton.

Physical Education 3a-3b—Bowling.

Physical Education 4a-4b—Boxing.

Physical Education 5a-5b—Folk and Square Dance.

Physical Education 6a-6b-6c-6d—Modern Dance.

Physical Education 7a-7b—Social Dance.

Physical Education 8a-8b—Golf.

Physical Education 9a-9b—Swimming.

Physical Education 10a-10b—Tennis.

Physical Education 11a-11b—Tumbling.

Physical Education 12a-12b—Weight Lifting.

Physical Education 13a-13b—Wrestling.

Physical Education 14a-14b—Cross Country.

Physical Education 15a-15b-15c-15d—General Activities—Not listed.

Physical Education 16a-16b—Choreography.

No Physical Education course may be repeated. An advanced course will be offered to the fourth semester student. Grades in courses 1-16 are assigned on "S" and "U" basis.

Pre-Professional Training Courses

PHYSICAL EDUCATION 25a—FUNDAMENTALS OF FOOTBALL (2) I.

Analysis of position and team play. Equipment, rules, systems and principles underlying participation.

Lecture—Laboratory.

PHYSICAL EDUCATION 25b—FUNDAMENTALS OF BASKETBALL (2) I.

Analysis of position and team play. Equipment, rules, systems and principles underlying participation.

Lecture—Laboratory.

Not offered 1960-1961.

PHYSICAL EDUCATION 25c—MODERN TRACK AND FIELD FUNDAMENTALS (2) II.

For physical education majors interested in the skills and coaching techniques of track and field.

Lecture—Laboratory.

PHYSICAL EDUCATION 25d—FUNDAMENTALS OF BASEBALL (2) II.

Elementary mastery of position and team play. Scheduling, training, and techniques.

Lecture—Laboratory.

Not offered 1960-1961.

PHYSICAL EDUCATION 30a—FUNDAMENTALS OF RHYTHM AND DANCE (2) I.

Designed to introduce physical education majors to the meaning of rhythm and its importance to modern, folk, square and social dances.

Lecture—Laboratory.

PHYSICAL EDUCATION 30b—INTRODUCTION TO AQUATICS, AND SPECIAL ACTIVITIES (2) II.

To introduce physical education majors to aquatics, gymnastics and tumbling, posture study, etc. Involves two lectures and one two hour laboratory per week. Average swimming ability is a prerequisite.

PHYSICAL EDUCATION 30c-30d—FUNDAMENTALS OF TEAM SPORTS (2-2) I, II.

Practical theory course of advanced techniques, skills and official rules of team sports. (Volleyball, basketball, field hockey, and softball) for women physical education majors and minors.

One hour lecture, three hours laboratory.

Prerequisite: Physical education major or minor or by permission of instructor.

PHYSICAL EDUCATION 30e—FUNDAMENTALS OF INDIVIDUAL SPORTS (2) I.

Practice and theory course of the analysis of skills, rules and progression of strokes, and tactics of individual sports. Archery, badminton, tennis and recreational games.

Prerequisite: Physical education major or minor.

PHYSICAL EDUCATION 31—ORIENTATION IN PHYSICAL EDUCATION (2) II.

Introduction to the physical education program, personal, social, professional requirements, and demands.

Inter-Collegiate Activities

The 50 courses are for students who excel in athletic ability and wish to participate in the inter-collegiate program competing against other junior colleges within the Central California Conference. These students participating in this program are also expected to work toward demonstrating minimum ability in at least one activity in any one of the several recreational groups which is not a duplicate of their team activities. Students intending to enter this program are advised to plan their regular schedules to include a minimum of ten hours per week during the seasons of each competitive sport entered. Grades in classes marked 50 are assigned on A, B, C, D, F basis.

Physical Education 50α-50b—Varsity Football (1-1) I.
Physical Education 51α-51b-51c-51d—Varsity Basketball (1-1-1-1) I, II.
Physical Education 52α-52b—Varsity Baseball (1-1) II.
Physical Education 53α-53b—Varsity Track (1-1) II.
Physical Education 54α-54b—Varsity Tennis (1-1) II.
Physical Education 55α-55b—Varsity Swimming (1-1) II.
Physical Education 56α-56b—Varsity Boxing (1-1) II.
Physical Education 57α-57b—Varsity Golf (1-1) II.
Physical Education 58α-58b—Varsity Cross Country (1-1) I.
Physical Education 59α-59b—Varsity Wrestling (1-1) II.

PSYCHOLOGY

PSYCHOLOGY 1α—GENERAL PSYCHOLOGY (3) I, II, E.

The introductory course in psychology is a survey of the processes of adjustment, growth, learning, remembering, perceiving, thinking, sensation, and emotion.

Prerequisite: Open to all Sophomores and all second-semester Freshmen and to qualified first-semester Freshmen.

PSYCHOLOGY 1b—FIELDS OF PSYCHOLOGY (3) II.

A survey of the fields of contemporary psychology such as social, abnormal, child, educational, and vocational. Local kindergartens and clinics are visited.

Prerequisite: Psychology 1α with a grade of "C" or better, or with the instructor's approval.

PSYCHOLOGY 19—FUNDAMENTALS OF LEADERSHIP (1) I.

A course for members of the student executive board and other interested students for the study of the student body, constitution, parliamentary procedures, organization, publicity, and finance, and for the development of leadership qualities.

PSYCHOLOGY 33—PERSONAL AND SOCIAL ADJUSTMENT (3) I, II, E.

The development of normal personality and the study of problems of social adjustment.

Prerequisite: Psychology 1α.

PSYCHOLOGY 51—PSYCHOLOGY OF PERSONAL ADJUSTMENT (3) I, II, E.

A course designed to give students an understanding of the development of personality and to develop a knowledge of psychology that will be useful in everyday living.

PSYCHOLOGY 57—CHILD DEVELOPMENT (3) II.

Study of needs of infant and child in relation to the family. Preparation for arrival of children, prenatal development, infancy, and childhood.

SCIENCE

ANATOMY 1—HUMAN ANATOMY (4) I.

Three hours lecture and three hours laboratory per week.

A study of the body first as an integrated whole, followed by a consideration of the organ systems in succession with enough histology to make the study of gross structures more meaningful. Designed to meet the requirements for pre-nursing courses and a cultural course in human biology.

Prerequisite: None. High school biology and chemistry are recommended.

ASTRONOMY 10—SURVEY OF ASTRONOMY (3) I, II, E.

Three hours lecture per week.

A non-technical course in astronomy with emphasis on an understanding and appreciation of the wonders of the universe combined with a study of the constellations. One or more evening observation periods required.

Prerequisite: High school algebra and geometry recommended.

BACTERIOLOGY 1—GENERAL BACTERIOLOGY (5) II.

Three hours lecture and six hours laboratory per week.

Lectures cover morphology, biochemical activities, physical and chemical agents of destruction, infection and disease, bacteriology of industry, and elements of taxonomy.

Laboratory covers staining techniques, biochemical activities and classification, and exercises correlated with the major field of study of the individual student.

Prerequisites: Chemistry 1a, Chemistry 8, and a course in Zoology.

BACTERIOLOGY 2—GENERAL MICROBIOLOGY (4) I.

Two hours lecture and six hours laboratory per week.

This course is designed to give pre-nursing, home economics, and agricultural majors an understanding of the principles of microbiology. Covers types of organisms, their biochemical activities, microbiology of industry, diseases of plants, animals, and man.

This course is not for biology, botany, microbiology, or zoology majors.

Prerequisite: Chemistry (may be taken concurrently).

BIOLOGY 1a—PLANT BIOLOGY (3) I, II.

Two hours lecture and three hours laboratory per week.

A survey course of the plant kingdom designed to enrich cultural background of any student, and serve as a prerequisite for further study in Biology. Not open to students who have had a previous college course in Botany.

BIOLOGY 1b—ANIMAL BIOLOGY (3) I, II.

Two hours lecture and three hours laboratory per week.

A survey of the animal kingdom designed to enrich the cultural background of any student, and serve as a prerequisite for further study in Biology. Not open to students who have had a previous course in Zoology.

Biology 1a is not prerequisite to Biology 1b.

BOTANY 1—GENERAL BOTANY (5) II.

Three hours lecture and six hours laboratory per week.

An introductory study of the basic principles of plant morphology, taxonomy, ecology, physiology, heredity, and evolution.

BOTANY 10—SURVEY OF BOTANY (3) I, II, E.

A course designed for students who desire general knowledge of plant life without spending time in the laboratory. Three lectures a week covering the same material as the lectures in Botany 1.

CHEMISTRY 1a-1b—GENERAL CHEMISTRY (5-5) I, II.

A study of the fundamental theories and laws of chemistry with an emphasis on the mathematical treatment of chemistry rather than the general aspects and introduction to laboratory qualitative analysis. This course is for those intending to enter professional fields which require chemistry as a foundation.

Prerequisite: Satisfactory score on the mathematics section of aptitude test, high school chemistry, and through second year high school algebra.

CHEMISTRY 2a-2b—GENERAL CHEMISTRY (3-3) Yr.

Two hours lecture and three hours laboratory each week.

A study of the fundamental theories and laws of chemistry.

Prerequisite: High school chemistry, or the permission of the instructor.

CHEMISTRY 5—QUANTITATIVE ANALYSIS (3) II.

One hour lecture, one hour recitation, six hours laboratory per week.

An introductory course in the fundamental principles of quantitative analysis with a theoretical treatment of the laws and theories which apply and general instructions in various methods of gravimetric and volumetric analysis. For students interested in medicine, clinical work, petroleum, or chemical industries in general.

Prerequisite: Chemistry 1a or 1b with a grade of "C" or better.

CHEMISTRY 8—ORGANIC CHEMISTRY (3) I.

Three hours lecture per week.

A study of the fundamental theories and laws of the chemistry of the aliphatic and aromatic carbon compounds. Designed primarily for majors in pre-medicine, pre-dentistry, related biological fields, and engineering.

Prerequisite: Chemistry 1a or 1b with a grade of "C" or better.

CHEMISTRY 9—ORGANIC CHEMISTRY (3) I.

One hour lecture and six hours laboratory per week.

A study of the properties and reactions of the common types of carbon compounds. Designed as the laboratory for Chemistry 8.

Prerequisite: Chemistry 8, which may be taken concurrently.

CHEMISTRY 53—GENERAL CHEMISTRY (3) I, II.

An introduction to the theories, laws and concepts of chemistry. Practical application of chemistry in daily living will be stressed. This course is suitable for students needing an introductory course in chemistry before studying Chemistry 1a. It will satisfy, in most cases, the chemistry requirements for students not interested in a four-year degree, but who plan to enter a pre-nursing hospital training program.

DENTAL ASSISTANT 50—DENTAL ASSISTANTS AND SECRETARIES (5) E.

Dental office management; chair assisting; dental anatomy; hygiene; laboratory techniques.

ENTOMOLOGY 82—ECONOMIC ENTOMOLOGY (3) I. E.

General study of western insects; life cycles, economic importance and control. Corresponds to Agriculture 82.

GEOLOGY 1a—PHYSICAL GEOLOGY (3) I, II, E.

Four hours lecture and laboratory per week.

A consideration of the composition and structure of the earth, and the internal and external processes which modify the crust and surface. One or more field excursions on Saturdays.

Prerequisite: None. Chemistry recommended.

GEOLOGY 1b—HISTORICAL GEOLOGY (3) II.

Three hours lecture per week.

A study of the geologic history of the earth, as shown by the changing patterns of land and sea, and by succession of flora and fauna. One or more field excursions on Saturdays.

Prerequisite: Geology 1a, or Geology 10.

GEOLOGY 10—SURVEY OF PHYSICAL GEOLOGY (3) E.

A survey of the nature and structure of the materials composing the earth and of the processes that shape the earth's surface. Field trips.

Not open to students who have taken or are taking Geology 1a.

METEOROLOGY 1—ELEMENTARY METEOROLOGY (3) I, II, E.

Three hours lecture per week.

A brief general course, designed to give the student an insight into the physical processes and laws underlying the phenomena of weather and climate. Meets the needs of the general student in addition to covering the specialized material ordinarily required for the commercial pilot ground curriculum.

MINERALOGY 1a-1b—GENERAL MINERALOGY (2-2) E.

One hour lecture and three hours laboratory per week.

An elementary course in the identification of the common rock and ore minerals. Laboratory practice in the determination of minerals by crystal form and by chemicals and blowpipe analysis. One or more field excursions on Saturdays.

NATURE STUDY 10a—NATURE STUDY FOR ELEMENTARY TEACHERS (3) I.

Two hours lecture and three hours laboratory.

A nature study approach to the study of the more common animals, plants, and natural phenomena. Subject matter for the fall semester will be obtained from the exploration of large areas such as: the vacant lot, the seashore, the creek or pond, signs of winter, and animals of city and country. Some Saturday field trips required.

NATURE STUDY 10b—NATURE STUDY FOR ELEMENTARY TEACHERS (3) II.

Two hours lecture and three hours laboratory.

A nature study approach to the study of the more common animals, plants, and natural phenomena. Subject matter for the spring semester will be obtained from the exploration of such areas as: the stars above us, the earth and its rocks, signs of spring, the open fields in spring, how plants grow, etc. Some Saturday field trips required.

PALEONTOLOGY 10—(3) II.

Two lectures and one demonstration section per week.

General principles of the history of life. Structures and development of animals and plants revealed in the fossil record. One or more field excursions on Saturdays.

Prerequisite: None. Biology 1 α , Geology 1 α or Zoology 10 are recommended.

PHYSICS 2 α -2b—GENERAL PHYSICS (3-3) Yr.

Three hours lecture per week.

A survey course in physics covering properties of matter, mechanics, heat, sound, light, electricity, and magnetism. Required for pre-medical students. May be taken by other students as an elective to satisfy science requirements.

Prerequisite: Trigonometry or Mathematics C.

PHYSICS 3 α -3b—GENERAL PHYSICS LABORATORY (1-1) Yr.

One three-hour laboratory each week in which students may work out experiments dealing with the phases of physics covered in Physics 2 α -2b. To be taken concurrently with Physics 2 α -2b.

PHYSICS 4 α —GENERAL PHYSICS (4) I, II.

Three hours lecture and three hours laboratory each week.

Fundamental treatment of the general principles of physics for the pre-engineer and pre-physical scientist. The topics considered in this first course are: mechanics, properties of matter, sound, and wave motion.

Prerequisite: Mathematics 3 α . High school physics and/or high school chemistry recommended.

PHYSICS 4b—GENERAL PHYSICS continued (4) I, II.

Three hours lecture and three hours laboratory each week.

Fundamental theoretical treatment of electricity, magnetism, and electronics.

Prerequisite: Physics 4 α ; Mathematics 14 α concurrently.

PHYSICS 4c—GENERAL PHYSICS continued (4) II.

Three hours lecture and three hours laboratory each week. Heat, optics, radiant energy, atomics, nucleonics.

Prerequisites: Physics 4 α -4b; Mathematics 14b concurrently.

PHYSICAL SCIENCE 10 α —PHYSICAL SCIENCE (3) I, E.

Introductory Astronomy, Meteorology and Physics; mechanical, magnetic and optical principles; application to everyday experiences. Lecture, demonstration.

PHYSICAL SCIENCE 10b—PHYSICAL SCIENCE (3) II, E.

Fundamental concepts of chemistry, their applications, contributions to chemical sources, and engineering. Not open to students with credit in college transfer chemistry.

PHYSICS 19a-19b—ELEMENTARY ELECTRONICS (3-3) Yr., E.

Three hours lecture each week.

A lecture, demonstration course for the beginner. It is designed to develop an ability to reason how electrons will react when under the influence of electric and magnetic fields within conductors and electron tubes. Recommended to take Physics 23a-23b concurrently.

PHYSICS 20a-20b—FUNDAMENTAL ELECTRONICS (3-3) Yr.

Not offered in 1960-1961.

Two hours lecture and three hours laboratory each week.

A course concerned with the design and application of vacuum tubes in amplifiers, oscillators, and special circuits. Radio and TV transmission and reception are considered in some detail.

Prerequisite: Physics 4a or 2a or 19a-19b.

PHYSICS 23a-23b—ELECTRONICS LABORATORY (1-1) Yr.

Three hours laboratory per week. Time to be devoted to electronic tests and measurements.

Designed to accompany Physics 19a-19b.

PHYSICS 45—ELEMENTARY NUCLEAR PHYSICS (1) II.

Non-mathematical theoretical approach to atomic structure, to practical atomic energy and their application to the modern world. Demonstrations of radio-activity will be given. Ionization survey chambers, pocket dosimeters, geiger counters, as used in the laboratory and in Civil Defense by the State of California will be utilized. Elementary physics or chemistry desirable, although not required.

PHYSICS 61—ELECTRICITY (3) E.

Three hours lecture and two hours laboratory per week.

An elementary course covering electricity, magnetism, and electronics.

PHYSICS 62—INDUSTRIAL ELECTRONICS (2) E.

Two hours lecture and two hours laboratory per week.

A continuation of Physics 61 covering certain industrial applications.

Prerequisites: High school algebra and trigonometry are recommended.

PHYSICS 70—RADIOLOGICAL MONITORING (Civil Defense) (3) E.

A lecture, demonstration, and laboratory course to familiarize the interested person in the the procedures and methods of radiological monitoring as used in Civil Defense. The course includes elementary theory and use of communications and radiation detection instruments.

PHYSIOLOGY 1a—INTRODUCTORY PHYSIOLOGY (3) II.

Three hours lecture per week.

A survey of the systems of the body and their functions. Special emphasis is placed upon the functional interrelationships of the neuro-muscular, circulatory, respiratory, digestive, and endocrine systems. This course will satisfy the requirements of pre-nursing and physical education majors, and of a general cultural course in life sciences.

Prerequisite: None. Anatomy 1a is recommended. Physiology 1c should be taken concurrently.

PHYSIOLOGY 1c—INTRODUCTORY PHYSIOLOGY LABORATORY (1 or 2) II.

Three or six hours laboratory per week.

A course covering experimental phases of the lecture material. The experiments cover nerve muscle preparation and recordings, sensory apparatus, blood pressures and clinical blood examinations, respiration, chemistry of food, urinalysis.

Prerequisite: Physiology 1a, which may be taken concurrently.

Note: Students should check the requirements of the college to which they intend to transfer before signing up for less than two units of laboratory.

ZOOLOGY 1a-1b—GENERAL ZOOLOGY (4-4) Yr.

Two hours lecture and six hours laboratory per week.

An introductory study of the basic principles of animal morphology, taxonomy, ecology, physiology, embryology, heredity, and evolution. This course satisfies the zoology requirements of pre-medicine, dentistry, agriculture.

ZOOLOGY 10—SURVEY OF ZOOLOGY (3) I, II, E.

Three hours lecture per week.

An introductory study of the basic principles of animal life. Open to those students who have had no previous course in college zoology.

SOCIAL SCIENCE

ANTHROPOLOGY 3—INTRODUCTION TO ARCHEOLOGY (3) E.

Physical and cultural anthropology explored through archeology. Mapping, surveying, excavating, and recording sites in Tulare County. Cataloging, classifying, analyzing, and storing of artifacts collected. Interpreting material in relation to native life and environment. Saturday field trips.

ANTHROPOLOGY 10—CULTURAL ANTHROPOLOGY (3) I, II, E.

The nature of culture, culture growth and history. Survey of cultural phenomena, cultural theory, applied anthropology.

ECONOMICS 1a-1b—PRINCIPLES OF ECONOMICS (3-3) I, II.

An introduction to the fundamental principles of economics. The areas of production, exchange, consumption, and distribution of the rights to use goods are studied with particular emphasis placed upon factors influencing prices, the nature of capitalism, the role of government in economic life, and special economic problems confronting the United States.

ECONOMICS 10—FUNDAMENTALS OF ECONOMICS (3) I, II.

A study of the general principles underlying economic activity and their relation to present American economic conditions and problems. This is for the student who desires a less intensive course than that presented in Economics 1a-1b.

ECONOMICS 50—ECONOMICS FOR BANKERS (AIB) (3) E.

This course covers the economic concepts of consumption, distribution, and exchange, including the organization of business, the regulation of public utilities, capital and labor, business cycles, international trade, and American economic policies.

GEOGRAPHY 1—ELEMENTS OF GEOGRAPHY (3) I, II, E.

A systematic study of the physical elements of geography—climate, land forms, map projections, natural vegetation, soils—combined with a study of the world's natural and cultural regions and their relationships with the physical patterns of the earth's surface.

GEOGRAPHY 2—REGIONAL GEOGRAPHY (3) I, II, E.

A study of the major regions of the world and their constituent countries. The physical setting, population patterns, natural resources, and economic development of each country are covered.

HISTORY 4a-4b—HISTORY OF WESTERN EUROPE (3-3) Yr.

The evolution of western civilization from antiquity to the contemporary scene. The course presents a general perspective through a consideration of the development of American economic, political, and social institutions. The aim is to lay a foundation for the understanding of contemporary problems.

HISTORY 8a-8b—HISTORY OF THE AMERICAS (3-3) Yr.

A general survey of the history of North, Central, and South America. Emphasis the first semester is on the European inheritance, colonial development, and international rivalry. The second semester is devoted to the wars of independence, the development of the American nations, and their interrelations during the nineteenth and twentieth centuries.

This six-unit course fulfills state requirements in American History.

HISTORY 10—AMERICAN HISTORY (3) I, II, E.

This course is designed, when used with Political Science 5, to fulfill the state requirement in American history for the student. A brief survey of the development of American economic, political, and social institutions. Traces the founding of the American colonies, the American revolution, the western movement, the era of sectional conflict, and the recent history of the United States.

HISTORY 17a-17b—HISTORY OF THE UNITED STATES (3-3) Yr.

A detailed study of the history of the United States from the colonial period to the present. History 17a covers the period of United States history from the colonial period through the Civil War. History 17b covers the period from the Civil War to the present. Social, cultural, intellectual and political developments are presented as a part of the development of American democracy.

This six-unit course fulfills state requirements in American History and is recommended for University transfer students.

HISTORY 30a-30b—HISTORY OF CALIFORNIA (2-2) E.

A detailed study of the history of California from the discovery period to the present. History 30a covers the discovery, exploration and early settlement of Alta California; founding of the missions; the Spanish, Mexican, and the American period of 1850; the government, customs, habits, and influences of the various peoples who occupied California.

History 30b covers the period from 1850 to the present, including a study of transportation and communication, political activities, immigration, commercial, industrial, and cultural development of California. This course does not fulfill U. S. History requirements for graduation.

HISTORY 51—AMERICAN HISTORY (3) I, II, E.

A survey of the development of American economic, political and social institutions.

This course fulfills state requirements in American History.

This course is designed primarily for those students not interested in transferring to a four year institution.

POLITICAL SCIENCE 2—COMPARATIVE GOVERNMENT (3) II.

A comparative study of constitutional principles and political problems of the various major governments of the world. An analysis of the evolution and contemporary nature of English, Soviet, German, and French political institutions.

POLITICAL SCIENCE 3—GOVERNMENT IN CALIFORNIA (3) E.

An examination of the legislative, administrative, judicial and electoral systems of California. Emphasis will also be given to city and county government and to the geography and present problems of California. This course satisfies all state requirements in the State and local governments of California but does not satisfy the Constitution of the United States requirement.

POLITICAL SCIENCE 5—FEDERAL, STATE AND LOCAL GOVERNMENT
(3) I, II, E.

An introduction to the principles and problems of national, state, and local government, with particular emphasis on the Constitution of the United States of America.

This course fulfills all state requirements in the Constitution of the United States and the State and local governments of California.

POLITICAL SCIENCE 10a-10b—GENERAL ADMINISTRATION OF JUSTICE
(3-3) Yr., E.

Course 10a is a study of the purpose, function, and brief history of the agencies dealing with the administration of justice. Course 10b is a study of the organization, administration and management of municipal police departments. Required for Law Enforcement major.

POLITICAL SCIENCE 51—AMERICAN, NATIONAL, STATE AND LOCAL
GOVERNMENT (3) I, II, E.

An introduction to the principles and problems of national, state, and local government, with particular emphasis on the Constitution of the United States of America.

This course fulfills all state requirements in the Constitution of the United States and the State and local governments of California.

This course is designed primarily for those students not interested in transferring to a four year institution.

SOCIOLOGY 1a-1b—INTRODUCTION TO SOCIOLOGY (3-3) I, II, E.

An introductory course covering (a) principal concepts, including culture, social organization, social change, social processes, and tools of sociological investigation; (b) major social problems; including the nature and treatment of juvenile delinquency, crime, prejudice, dependency and family.

SOCIOLOGY 26—MARRIAGE AND FAMILY LIFE (2) I, II.

This course is designed to give the student greater insight into family living. Consideration of such topics as: roles played by various family members; importance of the family for individuals and society; choosing a mate; successful living as husband, wife, parent, child; emotional, spiritual, sexual, and financial adjustment in marriage; the family in time of stress.

SOCIOLOGY 51—SOCIAL PROBLEMS (2) E.

An introductory course for the social worker. An investigation is made of the factors in the social life of man and his role in society. Emphasis is placed on social problems of this area.

SOCIOLOGY 52a-52b—INTRODUCTION TO PUBLIC WELFARE (3-3) E.

Historical survey of European and American welfare laws and practices. The last half of the course reviews latest developments of United States and California policies and laws.

SOCIOLOGY 53a-53b—MEDICAL CARE AND SOCIAL WELFARE (3-3) E.

Provides the social worker with medical care information that will assist him to administer a medical care program.

TRADES AND INDUSTRIES

Building Trades

BUILDING TRADES 55a-55b—ELEMENTARY CARPENTRY, TRADE RELATED INFORMATION (3-3) Yr.

An introductory course in those phases of carpentry that can be taught in the classroom, including safety, care and use of tools, blueprint reading, material estimating, bearing capacities of soils, termite control, laying out buildings, foundation form construction, framing. This course is required of all regular day school carpentry students.

BUILDING TRADES 56a-56b—ADVANCED CARPENTRY, TRADE RELATED INFORMATION (3-3) Yr.

A continuation of 55a and 55b. This course covers roof framing, exterior trim, interior trim and cabinet work. It is required of all regular day school second-year carpentry students.

BUILDING TRADES 65a-65b—ELEMENTARY CARPENTRY, MANIPULATIVE INSTRUCTION (6-6) Yr.

For three hours each school day the student works on a project house and performs the work of a beginning carpenter in the trade. He is furnished the hand and power tools found in the trade and is taught how to care for and use them. The beginning student usually works with an advanced student on the job.

BUILDING TRADES 66a-66b—ADVANCED CARPENTRY, MANIPULATIVE INSTRUCTION (6-6) Yr.

For three hours each school day the second-year student works on the project house and performs the more advanced work of a carpenter. This includes framing and rafter lay-out, cabinet making, material estimating. He usually works with a beginning student and learns to give instructions and directions to assistants in the manner of a journeyman.

— 98 —



INDEX

- Absence, Leave of, 20
- Absence policy, 19
- Accounting, 69
- Administration, 4
- Admission, 17
- Admission, Application for, 17
- Agri-Business, 39
- Agriculture, 38, 63
- Aims, 8
- Alpha Gamma Sigma, 18
- Anthropology, 94
- Archeology, 94
- Art, 40, 64
- Associate in Art Degree, 23
- Associated Students, 10
- Athletics, 11
- Attendance, 19
- Board of Trustees, 4
- Building Trades, 61, 97
- Business, 41, 66
- Calendar, 3
- California State Polytechnic College, 36
- Clubs, 11
- Conduct, 20
- Counseling, 9
- Course Numbers, 24
- Courses, Description of, 63-98
- Curricula, 10
- Deficiencies, Matriculation, 17
- Deficiency Notices, 20
- Disqualification, 22
- Drafting, 48
- Dramatics, 11
- Education, 49, 71
- Employment, 13
- Engineering, 49, 71
- English, 73
- Expenses, 13
- Extended Day Program, 25
- Facilities, 9
- Faculty, 5
- Foreign Languages, 76
- French, 76
- Fresno State College, 36
- General Regulations, 17
- Geography, 95
- Geometry, Descriptive, 72
- German, 76
- Grade Points, 21
- Grades, 20
- Graduation Requirements, 23
- Guidance, 9
- History of College, 8
- Home Economics, 50, 77
- Hospital Training Schools, 57
- Hygiene, 79
- Industrial Arts, 80
- Insurance, Students, 14
- Law Enforcement, 53, 80
- Library, 14
- Library Science, 81
- Living accommodations, 13
- Loans, 14
- Lower Division Requirements, 26
- Majors, 23
- Marriage and Family Life, 76, 97
- Mathematics, 81
- Mechanics, 80
- Merchandising, 45, 69
- Metal Trades, 62, 80
- Military Service, 12, 83
- Music, 11, 55, 83
- Non-Credit Status, courses, 18
- Nursing, 56, 79, 85
- Opera, 11
- Philosophy, 85
- Photography, 86
- Physical Education, 19, 60, 82
- Physically Handicapped, 12
- Placement and Aptitude Tests, 19
- Pre-Dentistry, 46
- Pre-Engineering, 49
- Pre-Medicine, 54
- Pre-Nursing, 56
- Pre-Pharmacy, 58
- Pre-Teaching, 46
- Probation, 22
- Psychology, 88
- Publications, Student, 12
- Registration, 17
- San Jose State College, 37
- Santa Barbara College, 32
- Scholastic Regulations, 22
- Scholarships, 14
- Scholastic Honors, 18
- Science, 89
- Secretarial and Clerical, 67
- Social Affairs, 12
- Social Sciences, 94
- Sociology, 97
- Spanish, 76
- Speech Arts, 75
- Stanford University, 33
- State Colleges, 36, 50, 55, 60
- Student Activities, 10
- Surveying, 72
- Symbols, Explanation of, 24
- Trades and Industries, 61, 80, 97
- Transcripts, 18
- Transportation, 12
- University of California at Berkeley, 27, 46, 58
- University of Calif. at Los Angeles, 30, 28, 54
- University of Southern California, 35, 47, 59
- Veterans, 12
- Vocational Nursing, 58, 85
- Welding, 80
- Withdrawals, 20
- Work, Amount of, 18

